



Document 2019 1391

Book 2019 Page 1391 Type 06 043 Pages 1  
Date 5/16/2019 Time 12:55:24PM  
Rec Amt \$7.00

INDX  
ANNO  
SCAN  
CHEK

LISA SMITH, COUNTY RECORDER  
MADISON COUNTY IOWA

RETURN TO: CIVIL DESIGN ADVANTAGE, 3405 S.E. CROSSROADS DRIVE, SUITE G, GRIMES, IOWA 50111 PH: 515-369-4400 FAX: 515-369-4410  
+ Prepared by

# UNITED STATES PUBLIC LAND SURVEY CORNER CERTIFICATE OF

Land Survey Monuments situated in Section 2, Township 77, Range 27, of the  
Fifth Principal Meridian, MADISON County, Iowa.  
Previously recorded in BK 2003, PG 1451 in County Recorder's Office.  
(book, page, document number, etc.)

(Show reason for preparing this certificate, the evidence and detailed procedures  
used in establishing the corner positions and monumentation found or placed.)

### Monument Description and Remarks:

**REASON FOR FILING CORNER CERTIFICATE (CHECK ALL THAT APPLY)**

THERE IS NO CERTIFICATE FOR THE CORNER ON FILE WITH THE RECORDER OF THE COUNTY IN WHICH THE CORNER IS LOCATED.

THE SURVEYOR IN RESPONSIBLE CHARGE OF THE LAND SURVEYING ACCEPTS A CORNER POSITION WHICH DIFFERS FROM THAT SHOWN IN THE PUBLIC RECORDS OF THE COUNTY IN WHICH THE CORNER IS LOCATED.

THE CORNER MONUMENT IS REPLACED OR MODIFIED IN ANY WAY.

THE REFERENCE TIES IN AN EXISTING PUBLIC RECORD ARE INCORRECT OR MISSING.

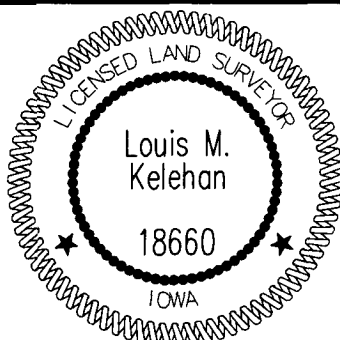
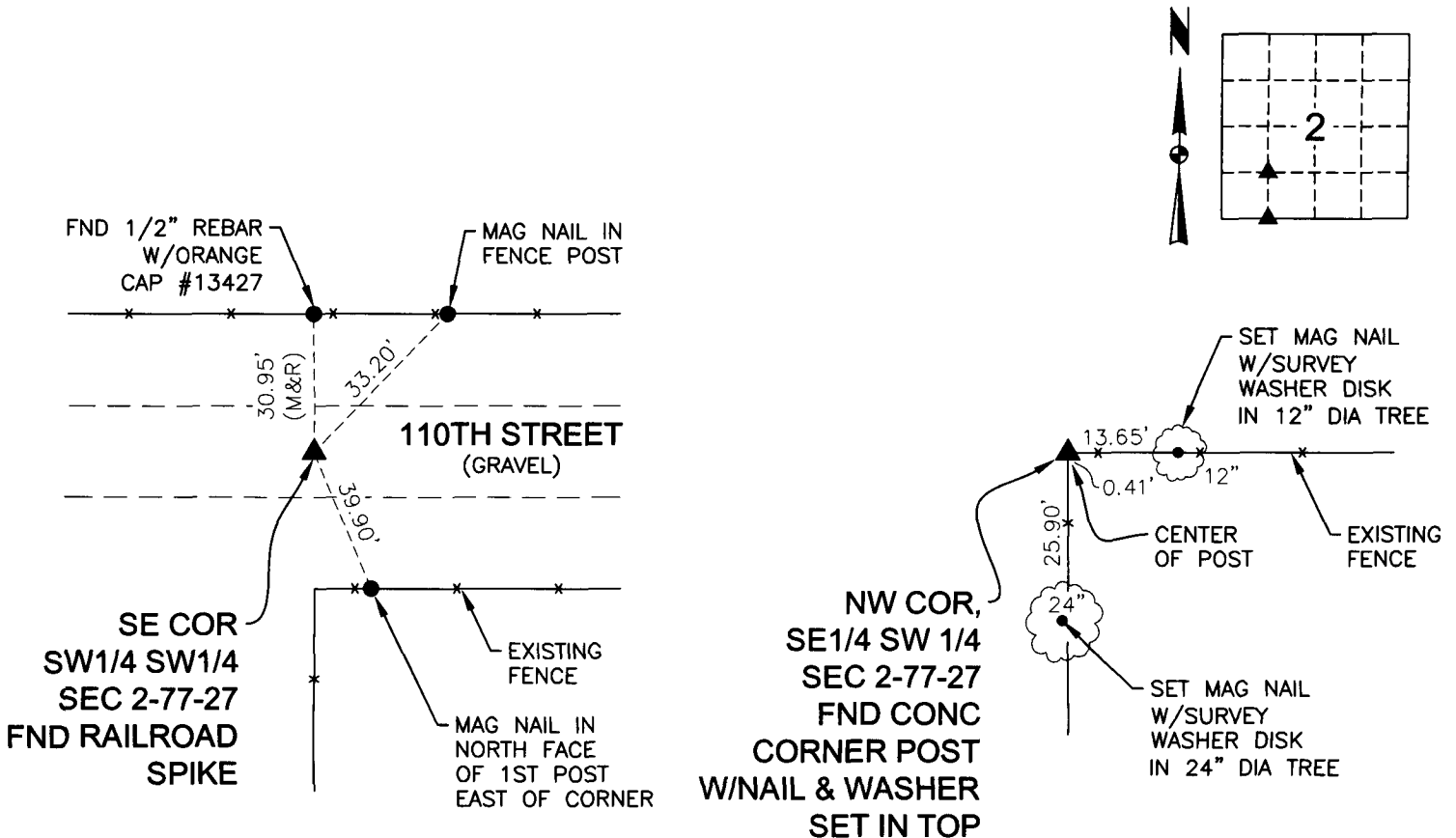
- SE CORNER, SW1/4 SW1/4, SEC 2-77-27. FOUND RAILROAD SPIKE AS SHOWN ON PREVIOUS CORNER CERTIFICATE. TIED OUT CORNER WITH THREE TIES.

- NW CORNER, SE1/4 SW 1/4, SEC 2-77-27. FOUND CONCRETE CORNER POST W/NAIL & WASHER SET IN TOP AS SHOWN ON RETRACEMENT SURVEY IN BOOK 2008, PAGE 314. TIED OUT CORNER WITH THREE TIES

USED CORNERS FOR PLAT OF SURVEY IN THE SW 1/4 OF SEC 2-77-27 RECORDED IN BOOK 2019, PAGE 851.

## PLAN VIEW

(Show a minimum of three reference ties to durable physical objects, relevant monuments and physical conditions that will enable recovery of the corner.)



I HEREBY CERTIFY THAT THIS LAND SURVEYING DOCUMENT WAS PREPARED AND THE RELATED SURVEY WORK WAS PERFORMED BY ME OR UNDER MY DIRECT PERSONAL SUPERVISION AND THAT I AM A DULY LICENSED LAND SURVEYOR UNDER THE LAWS OF THE STATE OF IOWA.

*Louis M. Kelehan* 5/14/19  
LOUIS M. KELEHAN, P.L.S. DATE

LICENSE NUMBER 18660  
MY LICENSE RENEWAL DATE IS DECEMBER 31, 2019  
CERTIFICATION COVERS THIS SHEET ONLY

### LIST CORNERS TO BE INDEXED:

CORNERS	SECTION	TWP	RANGE
SE COR SW1/4 SW1/4	2	77	27
NE COR NW1/4 NW1/4	11	77	27
NW COR SE1/4 SW1/4	2	77	27

TECH	PN	DATE
LMK	1902052	05/14/19