



Document 2019 1390

Book 2019 Page 1390 Type 06 043 Pages 1
Date 5/16/2019 Time 12:54:40PM
Rec Amt \$7.00

INDX
ANNO
SCAN
CHEK

LISA SMITH, COUNTY RECORDER
MADISON COUNTY IOWA

RETURN TO: CIVIL DESIGN ADVANTAGE, 3405 S.E. CROSSROADS DRIVE, SUITE G, GRIMES, IOWA 50111 PH: 515-369-4400 FAX: 515-369-4410

+ prepared by

UNITED STATES PUBLIC LAND SURVEY CORNER CERTIFICATE OF

Land Survey Monuments situated in Section 2, Township 77, Range 27, of the
Fifth Principal Meridian, MADISON County, Iowa.

Previously recorded in BK 1, PG 27 & BK 1, PG 61 in County Recorder's Office.
(book, page, document number, etc.)

(Show reason for preparing this certificate, the evidence and detailed procedures
used in establishing the corner positions and monumentation found or placed.)

Monument Description and Remarks:

REASON FOR FILING CORNER CERTIFICATE (CHECK ALL THAT APPLY)

- THERE IS NO CERTIFICATE FOR THE CORNER ON FILE WITH THE RECORDER OF THE COUNTY IN WHICH THE CORNER IS LOCATED.
- THE SURVEYOR IN RESPONSIBLE CHARGE OF THE LAND SURVEYING ACCEPTS A CORNER POSITION WHICH DIFFERS FROM THAT SHOWN IN THE PUBLIC RECORDS OF THE COUNTY IN WHICH THE CORNER IS LOCATED.
- THE CORNER MONUMENT IS REPLACED OR MODIFIED IN ANY WAY.
- THE REFERENCE TIES IN AN EXISTING PUBLIC RECORD ARE INCORRECT OR MISSING.

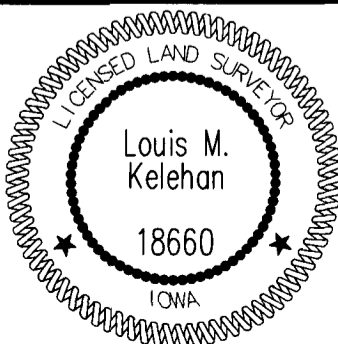
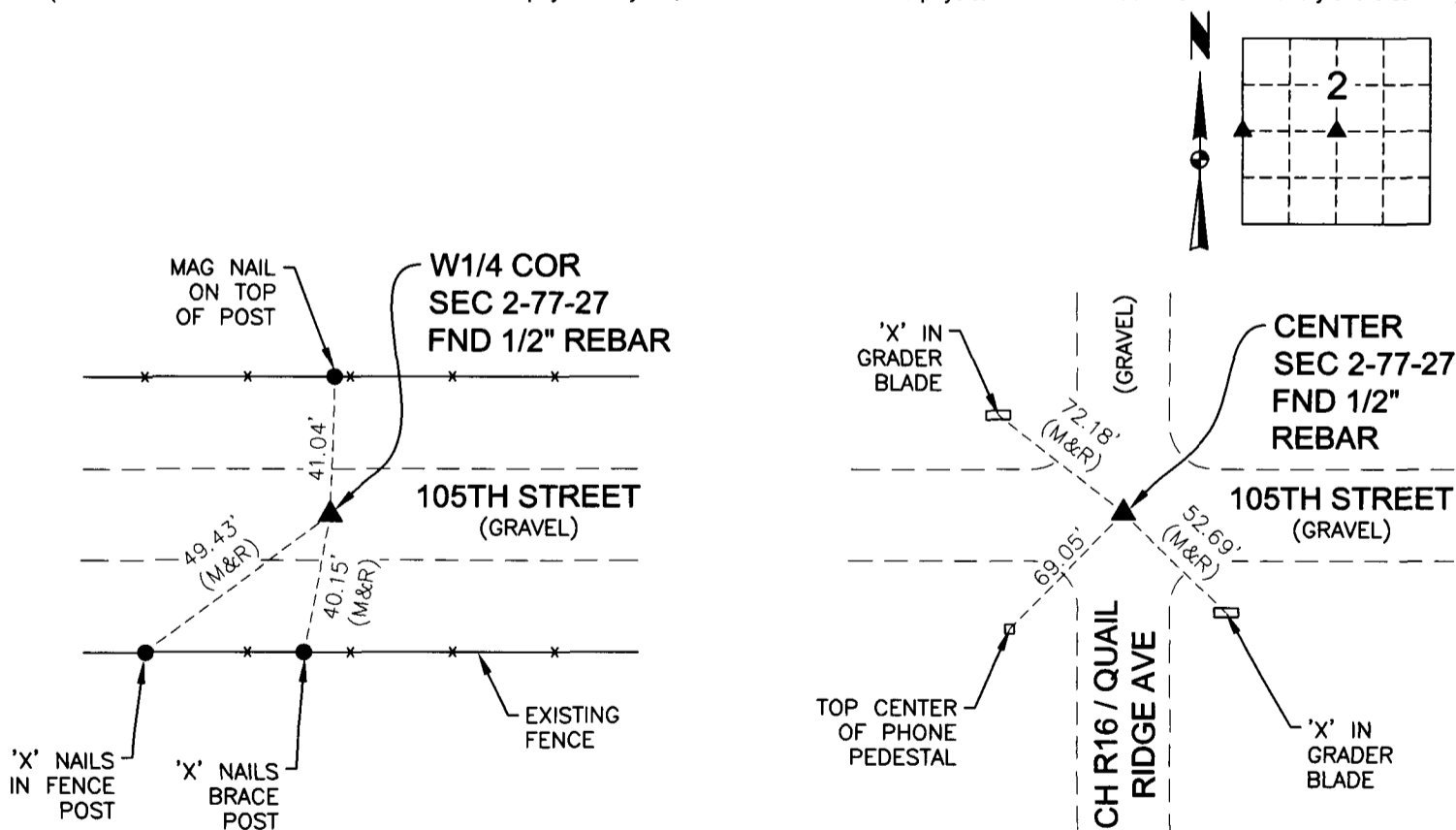
- W 1/4 CORNER, SEC 2-77-27. FOUND 1/2" REBAR AS SHOWN ON PREVIOUS CORNER CERTIFICATE. TIED OUT CORNER WITH THREE TIES

- CENTER, SEC 2-77-27. FOUND 1/2" REBAR AS SHOWN ON PREVIOUS CORNER CERTIFICATE. TIED OUT CORNER WITH THREE TIES

USED CORNERS FOR PLAT OF SURVEY IN THE SW 1/4 OF SEC 2-77-27 RECORDED IN BOOK 2019, PAGE 851.

PLAN VIEW

(Show a minimum of three reference ties to durable physical objects, relevant monuments and physical conditions that will enable recovery of the corner.)



I HEREBY CERTIFY THAT THIS LAND SURVEYING DOCUMENT WAS PREPARED AND THE RELATED SURVEY WORK WAS PERFORMED BY ME OR UNDER MY DIRECT PERSONAL SUPERVISION AND THAT I AM A DULY LICENSED LAND SURVEYOR UNDER THE LAWS OF THE STATE OF IOWA.

Louis M. Kelehan 5/14/19
LOUIS M. KELEHAN, P.L.S. DATE

LICENSE NUMBER 18660
MY LICENSE RENEWAL DATE IS DECEMBER 31, 2019
CERTIFICATION COVERS THIS SHEET ONLY

LIST CORNERS TO BE INDEXED:

| CORNERS | SECTION | TWP | RANGE |
|----------|---------|-----|-------|
| W1/4 COR | 2 | 77 | 27 |
| E1/4 COR | 3 | 77 | 27 |
| CENTER | 2 | 77 | 27 |

TECH PN DATE
LMK 1902052 05/14/19