

UNITED STATES PUBLIC LAND SURVEY CORNER CERTIFICATE

Prepared by & Return to: Scott A. Steinfadt, P.L.S.
 PH: 641-847-3273 Clapsaddle-Garber Associates, Inc.
 FAX: 641-847-2303 739 Park Ave., Ackley, IA. 50601



Document 2019 1275

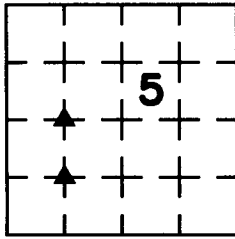
Book 2019 Page 1275 Type 06 043 Pages 1
 Date 5/06/2019 Time 11:14:55AM
 Rec Amt \$7.00

INDX
 ANNO
 SCAN
 CHEK

LISA SMITH, COUNTY RECORDER
 MADISON COUNTY IOWA

Corners to be Indexed

Corners	Section	Township	Range
NW Cor. NE $\frac{1}{4}$ SW $\frac{1}{4}$	5	74N	28W
SW Cor. NE $\frac{1}{4}$ SW $\frac{1}{4}$	5	74N	28W

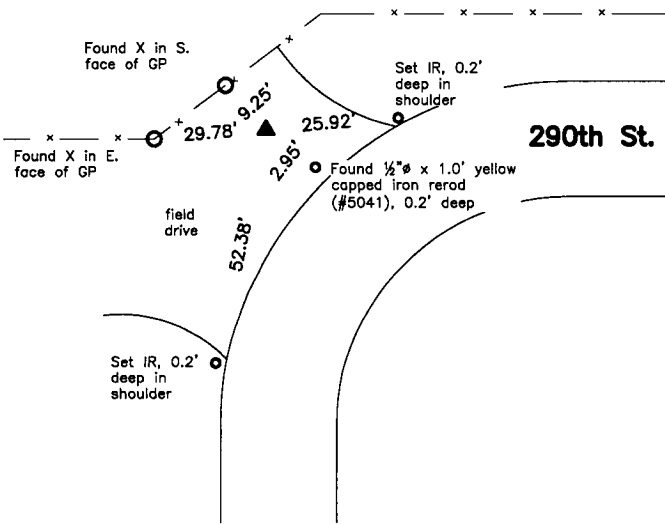


Land Survey Monuments situated in Section 5, Township 74 North, Range 28 West of the Fifth Principal Meridian, Madison County, Iowa, Previously recorded in (see below) in County Recorder's Office.

NW Corner NE $\frac{1}{4}$ SW $\frac{1}{4}$ - Book 1 Page 2
 SW Corner NE $\frac{1}{4}$ SW $\frac{1}{4}$ - Not Applicable

These corners were used for a survey in this section for Curt and Andree Sandahl. Basis of bearing for this corner certificate can be found on the associated plat of survey filed in the County Recorder's Office for this section.

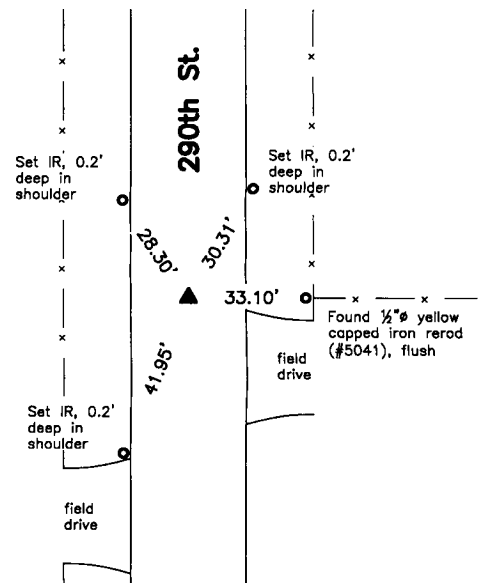
NW Corner NE $\frac{1}{4}$ SW $\frac{1}{4}$



Corner Recovery =
 County Engineer's Surveyor's Record Book 2 Page 116 indicates corner is monumented with "Stone". County Recorder's Farm Plat Book 2 Page 135 indicates corner is monumented with "SET C.I.P. # 5041". County Recorder's Book 1 Page 2 and County Engineer's current ties indicate corner is monumented with "C.I.P. # 5041 Found". Searched area with a magnetic locator and excavated a 1.0' ϕ x 0.5' deep hole at magnetic reading. Found a $\frac{1}{2}$ " ϕ x 1.0' yellow capped iron rodd (#5041), 0.2' deep. Tied out and removed rodd, searched again with magnetic locator and found 16d iron nail, 0.4' deep. Tied out and removed nail. Searched a 4.0' \pm x 4.0' \pm area around rodd and a 4.0' \pm area around the split between a magnetic reading near the W $\frac{1}{4}$ Corner and the Center with a tile probe. Excavated a 1.5' ϕ x 1.5' deep hole at probed stone location and found a 6" x 9" x 13" tan limestone upright and well nested, 0.9' deep at 2.0' \pm N. of apparent centerline of traveled surface of gravel road E., 2.0' \pm W. of apparent centerline of traveled surface of gravel road S. and 2.0' \pm N. of fenceline W. Monuments found match that of record, but the stone is the older and deeper monument of record. Therefore, placed an orange plastic cased magnet on E. side of stone below high point for locating purposes only, set a 'MAG' nail in high point of stone and used nail as the correct corner. Reset rodd at original location and depth and used as a tie only. All ties are plumb distance.
 Note: Rerod is S38 $^{\circ}$ 24'50"E, 2.95' from 'MAG' nail. 16D iron nail was S38 $^{\circ}$ 47'30"E, 2.99' from 'MAG' nail.

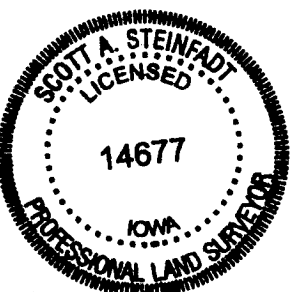
This certificate is being prepared because there is a change to monumentation of record.

SW Corner NE $\frac{1}{4}$ SW $\frac{1}{4}$



Corner Recovery =
 County Engineer's Surveyor's Record Book 2 Page 116 indicates corner is monumented with "Stone". County Recorder's Farm Plat Book 2 Page 135 indicates corner is monumented with "SET C.I.P. # 5041". Searched area with a magnetic locator and excavated a 2.2' ϕ x 1.0' deep hole at magnetic reading. Found a $\frac{1}{2}$ " ϕ x 1.2' yellow capped iron rodd (#5041), 0.2' deep in apparent centerline of traveled surface of gravel road N-S and inline with fenceline E. Location of monument found matches that of record, monument found matches that of record. Tied out and removed rodd, searched hole to 4.0' \pm deep with a tile probe and found no additional monuments, roadbed in this area is in a cut area. Reset rodd at original location and depth and used it as the correct corner. All ties are plumb distance.

This certificate is being prepared because there are no certificates on file for this corner.



I hereby certify that this land surveying document was prepared and the related survey work was performed by me or under my direct personal supervision and that I am a duly licensed Professional Land Surveyor under the laws of the State of Iowa.

Scott A. Steinfadt, P.L.S.
 SCOTT A. STEINFADT, PLS
 Date: 05/01/2019 License number: 14677
 My license renewal date is December 31, 2020
 Pages or sheets covered by this seal: 1

Legend
 GP = Gate Post
 IR = $\frac{1}{2}$ " ϕ x 2.0' Iron Rerod
 X = Iron "X" Nails

