



Document 2019 565

Book 2019 Page 565 Type 06 043 Pages 1
Date 2/15/2019 Time 11:17:19AM
Rec Amt \$7.00

INDX
ANNO
SCAN
CHEK

LISA SMITH, COUNTY RECORDER
MADISON COUNTY IOWA

PREPARED BY & RETURN TO JACOB IRLMEIER, SNYDER & ASSOCIATES, INC. 1751 MADISON AVENUE, COUNCIL BLUFFS, IOWA 51503 (712) 322-3202

UNITED STATES PUBLIC LAND SURVEY CORNER CERTIFICATE OF

Land Survey Monuments situated in Section 36, Township 77, Range 29, of the Fifth Principal Meridian, MADISON, County, Iowa.
Previously recorded in BK. 2 PG. 77 in County Recorder's Office.
(book, page, document number, ect.)

(Show reason for preparing this certificate, the evidence and detailed procedures used in establishing the corner positions and monumentation found or placed.)

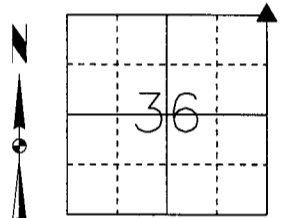
Monument Description and Remarks:

NORTHEAST CORNER

PREVIOUSLY RECORDED CERTIFICATE IN BOOK 2 PAGE 77. USED SAID CERTIFICATE AND METAL LOCATOR TO SEARCH AREA. FOUND PK NAIL AT THE SURFACE OF THE ROAD. TWO PREVIOUSLY RECORDED REFERENCE TIES REMAIN AND CHECK WITHIN REASON. THIS CERTIFICATE IS BEING FILED DUE TO MISSING REFERENCE TIES AND IN CONJUNCTION WITH A SECTION SURVEY FOR MIDAMERICAN ENERGY.

Plan-View

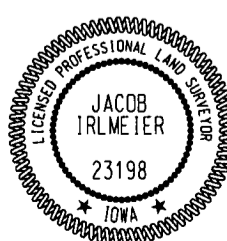
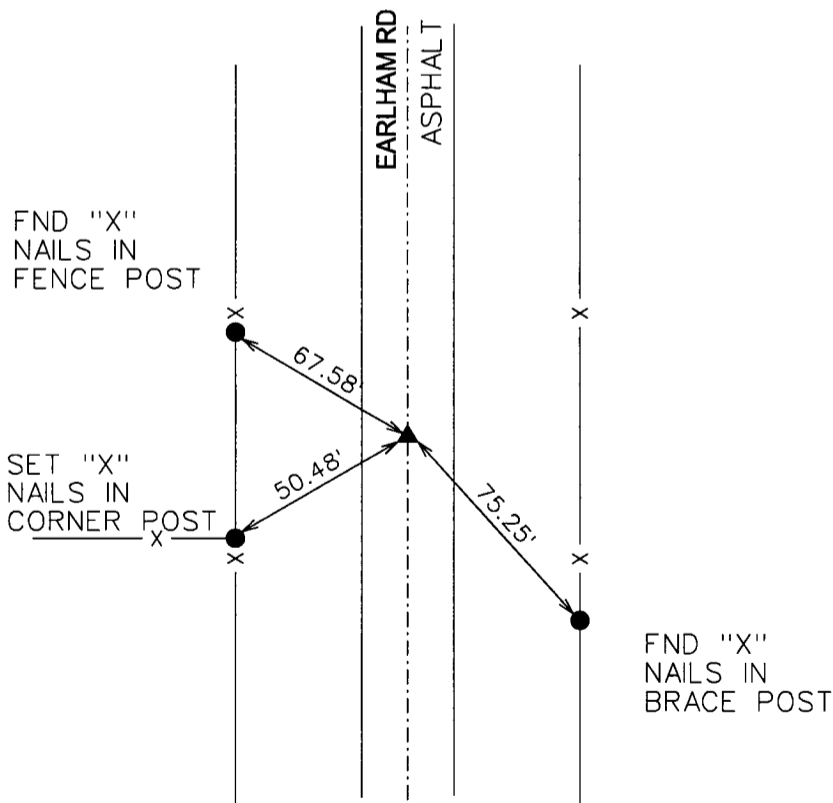
(Show a minimum of three reference ties to durable physical objects, relevant monuments and physical conditions that will enable recovery of the corner.)



SPC IA SOUTH
US SURVEY FEET
IOWA RTN DERIVED
NAD83(2011)
(EPOCH 2010.00)
N: 517480.629
E: 1405472.769

NORTHEAST CORNER

FOUND PK NAIL
AT THE SURFACE



I hereby certify that this land surveying document was prepared and the related survey work was performed by me or under my direct personal supervision and that I am a duly licensed Professional Land Surveyor under the laws of the State of Iowa.
Jacob Irlmeier 1/29/19
Jacob Irlmeier, PLS Date
License Number 23198
My License Renewal Date is December 31, 2019
Pages or sheets covered by this seal:
SHEET 1 OF 1

List Corners to be Indexed			
Corners	Section	Twp	Range
NE CORNER	36	77	29
SE CORNER	25	77	29
NW CORNER	31	77	28
SW CORNER	30	77	28