



Document 2019 555

Book 2019 Page 555 Type 06 043 Pages 1

Date 2/15/2019 Time 11:17:09AM

Rec Amt \$7.00

INDX
ANNO
SCAN

LISA SMITH, COUNTY RECORDER
MADISON COUNTY IOWA

CHEK

PREPARED BY & RETURN TO JACOB IRLMEIER, SNYDER & ASSOCIATES, INC. 1751 MADISON AVENUE, COUNCIL BLUFFS, IOWA 51503 (712) 322-3202

UNITED STATES PUBLIC LAND SURVEY CORNER CERTIFICATE OF

Land Survey Monuments situated in Section 9, Township 77, Range 29, of the Fifth Principal Meridian, MADISON, County, Iowa. Previously recorded in BK.2012 PG.3825 in County Recorder's Office. (book, page, document number, ect.)

(Show reason for preparing this certificate, the evidence and detailed procedures used in establishing the corner positions and monumentation found or placed.)

Monument Description and Remarks:

NORTHEAST CORNER

PREVIOUSLY RECORDED IN BOOK 2012 PAGE 3825. USED METAL LOCATOR TO SEARCH AREA AT CENTERLINE OF ROAD. FOUND PK NAIL, 0.1' DEEP. PREVIOUSLY RECORDED REFERENCE TIES WERE MISSING. MONUMENT IS 0.6' +/- WEST OF CENTERLINE OF ROAD NORTH AND SOUTH. THIS CERTIFICATE IS BEING FILED DUE TO MISSING REFERENCE TIES AND IN CONJUNCTION WITH A SECTION SURVEY FOR MIDAMERICAN ENERGY.

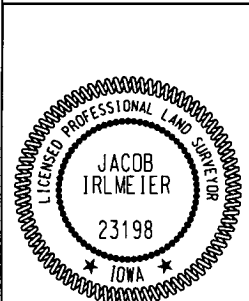
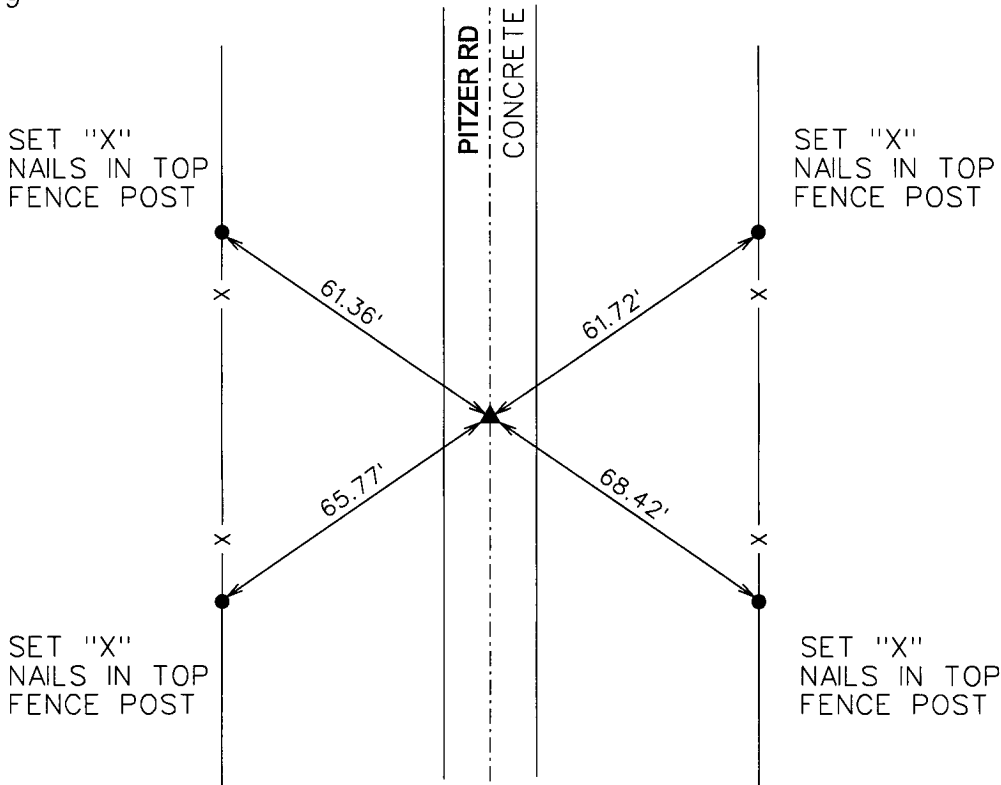
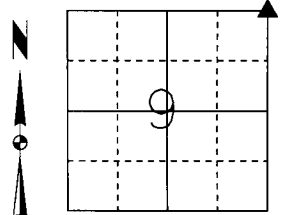
Plan-View

(Show a minimum of three reference ties to durable physical objects, relevant monuments and physical conditions that will enable recovery of the corner.)

SPC IA SOUTH
US SURVEY FEET
IOWA RTN DERIVED
NAD83(2011)
(EPOCH 2010.00)
N: 543359.06
E: 1452669.79

NORTHEAST CORNER

FOUND PK NAIL
0.1' DEEP



I hereby certify that this land surveying document was prepared and the related survey work was performed by me or under my direct personal supervision and that I am a duly licensed Professional Land Surveyor under the laws of the State of Iowa.

Jacob Irlmeier 1/29/19
Jacob Irlmeier, PLS Date

License Number 23198

My License Renewal Date is December 31, 2019

Pages or sheets covered by this seal:

SHEET 1 OF 1

List Corners to be Indexed

Corners	Section	Twp	Range
NE CORNER	9	77	29
SE CORNER	4	77	29
NW CORNER	10	77	29
SW CORNER	3	77	29

TECH: JCA

PN: 9-77-29 (117.0365)

DATE: 7/5/2018