



Document 2019 554

Book 2019 Page 554 Type 06 043 Pages 1
Date 2/15/2019 Time 11:17:08AM
Rec Amt \$7.00

INDX
ANNO
SCAN
CHEK

LISA SMITH, COUNTY RECORDER
MADISON COUNTY IOWA

PREPARED BY & RETURN TO JACOB IRLMEIER, SNYDER & ASSOCIATES, INC. 1751 MADISON AVENUE, COUNCIL BLUFFS, IOWA 51503 (712) 322-3202

UNITED STATES PUBLIC LAND SURVEY CORNER CERTIFICATE OF

Land Survey Monuments situated in Section 7, Township 76, Range 29, of the Fifth Principal Meridian, MADISON, County, Iowa. Previously recorded in BK.2001 PG.2034 in County Recorder's Office.
(book, page, document number, ect.)

(Show reason for preparing this certificate, the evidence and detailed procedures used in establishing the corner positions and monumentation found or placed.)

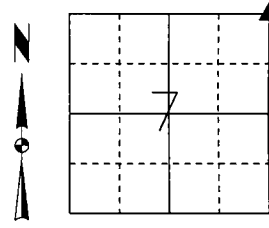
Monument Description and Remarks:

NORTHEAST CORNER

PREVIOUSLY RECORDED IN BOOK 2001 PAGE 2034. USED METAL LOCATOR AND EXISTING REFERENCE TIES TO SEARCH AREA AT INTERSECTION OF ROADS. FOUND 1/2" REBAR WITH UNREADABLE CAP, 0.2' DEEP. TWO PREVIOUSLY RECORDED REFERENCE TIES REMAIN AND CHECK WITHIN REASON. THIS CERTIFICATE IS BEING FILED DUE TO MISSING REFERENCE TIES AND IN CONJUNCTION WITH A SECTION SURVEY FOR MIDAMERICAN ENERGY.

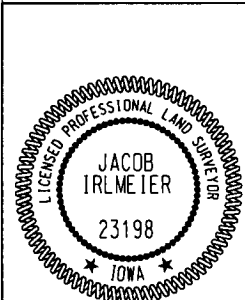
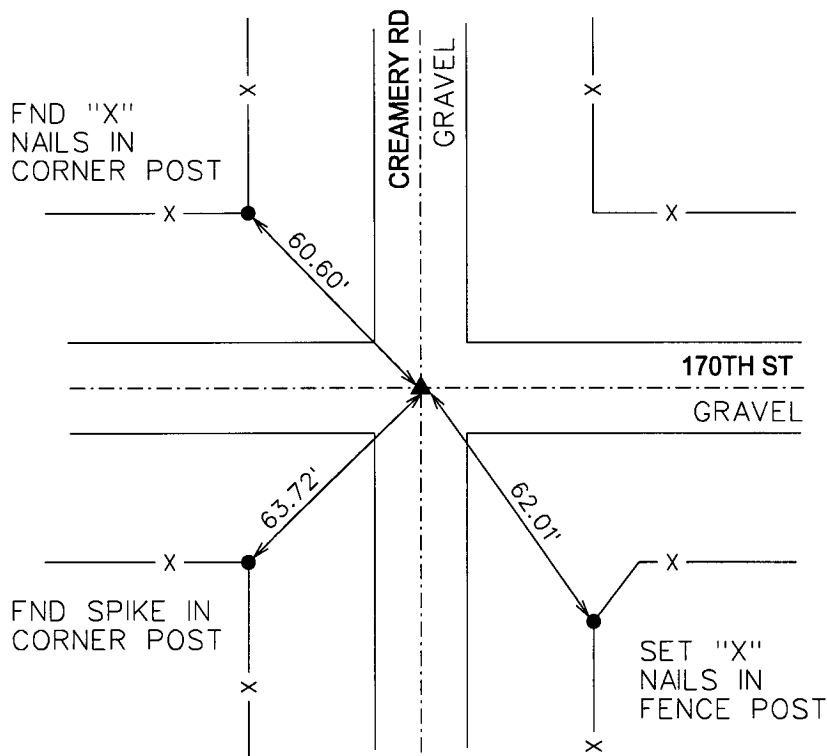
Plan-View

(Show a minimum of three reference ties to durable physical objects, relevant monuments and physical conditions that will enable recovery of the corner.)



SPC IA SOUTH
US SURVEY FEET
IOWA RTN DERIVED
NAD83(2011)
(EPOCH 2010.00)
N: 511884.41
E: 1442071.84

NORTHEAST CORNER
FOUND 1/2" REBAR
UNREADABLE CAP
0.2' DEEP



I hereby certify that this land surveying document was prepared and the related survey work was performed by me or under my direct personal supervision and that I am a duly licensed Professional Land Surveyor under the laws of the State of Iowa.
Jacob Irlmeier 1/29/19
Jacob Irlmeier, PLS Date
License Number 23198
My License Renewal Date is December 31, 2019
Pages or sheets covered by this seal:
SHEET 1 OF 1

List Corners to be Indexed			
Corners	Section	Twp	Range
NE CORNER	7	76	29
SE CORNER	6	76	29
NW CORNER	8	76	29
SW CORNER	5	76	29