



Document 2019 553

Book 2019 Page 553 Type 06 043 Pages 1

Date 2/15/2019 Time 11:17:07AM

Rec Amt \$7.00

INDX
ANNO
SCAN
CHEK

LISA SMITH, COUNTY RECORDER
MADISON COUNTY IOWA

PREPARED BY & RETURN TO JACOB IRLMEIER, SNYDER & ASSOCIATES, INC. 1751 MADISON AVENUE, COUNCIL BLUFFS, IOWA 51503 (712) 322-3202

UNITED STATES PUBLIC LAND SURVEY CORNER CERTIFICATE OF

Land Survey Monuments situated in Section 17, Township 77, Range 29, of the Fifth Principal Meridian, MADISON, County, Iowa. Previously recorded in N/A in County Recorder's Office.
(book, page, document number, ect.)

(Show reason for preparing this certificate, the evidence and detailed procedures used in establishing the corner positions and monumentation found or placed.)

Monument Description and Remarks:

NORTH 1/4 CORNER

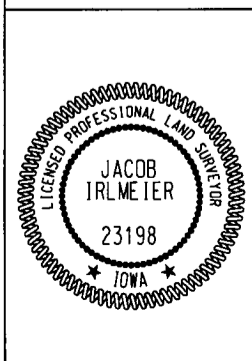
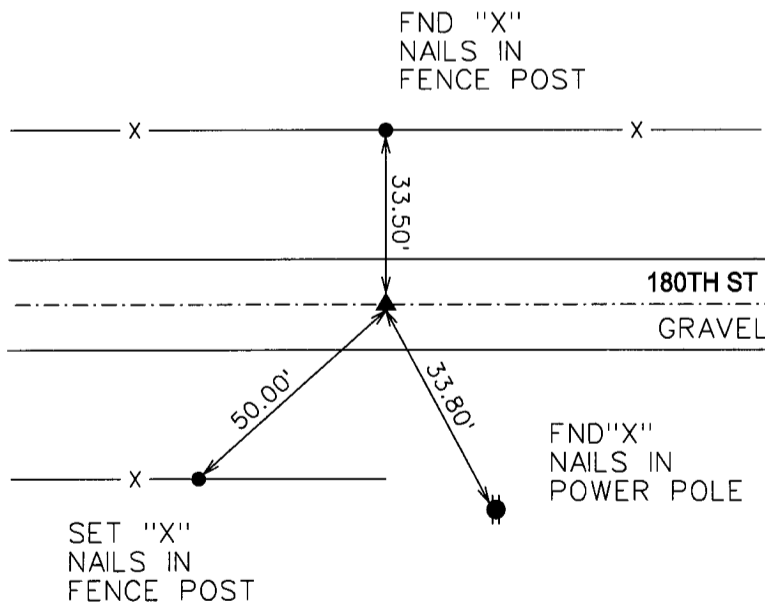
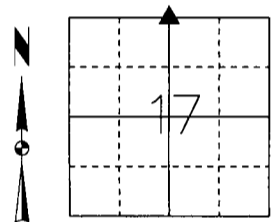
NO PREVIOUSLY RECORDED CERTIFICATE ON FILE. USED METAL LOCATOR TO SEARCH AREA AT CENTERLINE OF ROAD, NEAR SINGLE PROPORTION MEASUREMENT. FOUND 1/2" REBAR WITH NO CAP, 0.1' DEEP. ACCEPTED REBAR AS 1/4 CORNER MONUMENT. THIS CERTIFICATE IS BEING FILED DUE TO NO CERTIFICATE ON FILE WITH THE COUNTY RECORDER AND IN CONJUNCTION WITH A SECTION SURVEY FOR MIDAMERICAN ENERGY.

Plan-View

(Show a minimum of three reference ties to durable physical objects, relevant monuments and physical conditions that will enable recovery of the corner.)

SPC IA SOUTH
US SURVEY FEET
IOWA RTN DERIVED
NAD83(2011)
(EPOCH 2010.00)
N: 506590.11
E: 1444668.14

NORTH 1/4 CORNER
FOUND 1/2" REBAR
NO CAP
0.2' DEEP



I hereby certify that this land surveying document was prepared and the related survey work was performed by me or under my direct personal supervision and that I am a duly licensed Professional Land Surveyor under the laws of the State of Iowa.
Jacob Irlmeier 1/29/19
Jacob Irlmeier, PLS Date
License Number 23198
My License Renewal Date is December 31, 2019
Pages or sheets covered by this seal:
SHEET 1 OF 1

List Corners to be Indexed

Corners	Section	Twp	Range
N 1/4 CORNER	17	77	29
S 1/4 CORNER	8	77	29