



Document 2019 533

Book 2019 Page 533 Type 06 043 Pages 1

Date 2/15/2019 Time 11:16:47AM

Rec Amt \$7.00

INDX
ANNO
SCAN
CHEK

LISA SMITH, COUNTY RECORDER
MADISON COUNTY IOWA

PREPARED BY & RETURN TO JACOB IRLMEIER, SNYDER & ASSOCIATES, INC. 1751 MADISON AVENUE, COUNCIL BLUFFS, IOWA 51503 (712) 322-3202

UNITED STATES PUBLIC LAND SURVEY CORNER CERTIFICATE OF

Land Survey Monuments situated in Section 18, Township 77, Range 29, of the Fifth Principal Meridian, MADISON, County, Iowa. Previously recorded in BK. 568 PG. 147 (ADAIR CO.) in County Recorder's Office.
(book, page, document number, ect.)

(Show reason for preparing this certificate, the evidence and detailed procedures used in establishing the corner positions and monumentation found or placed.)

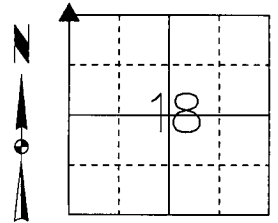
Monument Description and Remarks:

NORTHWEST CORNER

PREVIOUSLY RECORDED CERTIFICATE IN BOOK 568, PAGE 147 (ADAIR CO.). USED SAID CERTIFICATE AND METAL LOCATOR TO SEARCH AREA AT THE INTERSECTION OF ROADS EAST-WEST AND NORTH-SOUTH. FOUND 1/2" REBAR WITH NAIL, 0.1' DEEP IN CENTERLINE OF ROADS EAST-WEST, NORTH-SOUTH. USED SAID CERTIFICATE TO VALIDATE MONUMENT LOCATION. THIS CERTIFICATE IS BEING FILED DUE TO MISSING REFERENCE TIES AND IN CONJUNCTION WITH A SECTION SURVEY FOR MIDAMERICAN ENERGY.

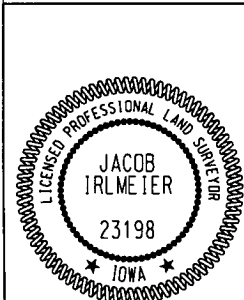
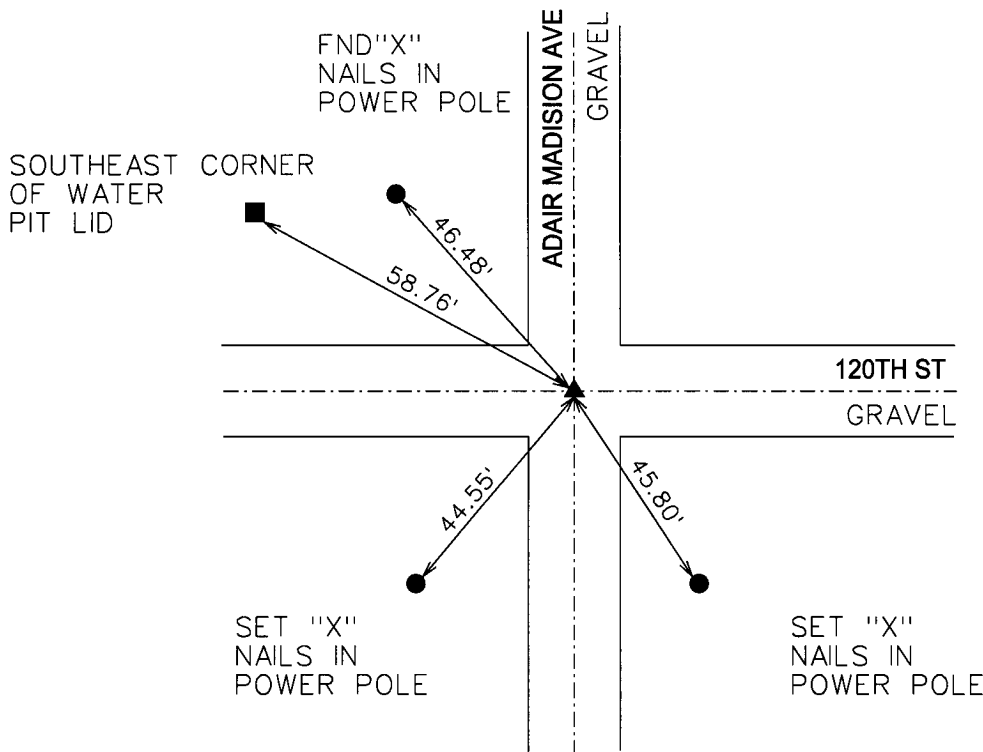
Plan-View

(Show a minimum of three reference ties to durable physical objects, relevant monuments and physical conditions that will enable recovery of the corner.)



SPC IA SOUTH
US SURVEY FEET
IOWA RTN DERIVED
NAD83(2011)
(EPOCH 2010.00)
N: 538284.593
E: 1437235.025

NORTHWEST CORNER
FOUND 1/2" REBAR
WITH NAIL
0.1' DEEP



I hereby certify that this land surveying document was prepared and the related survey work was performed by me or under my direct personal supervision and that I am a duly licensed Professional Land Surveyor under the laws of the State of Iowa.
Jacob Irlmeier 1/24/19 Date
Jacob Irlmeier, PLS
License Number 23198
My License Renewal Date is December 31, 2019
Pages or sheets covered by this seal:
SHEET 1 OF 1

List Corners to be Indexed			
Corners	Section	Twp	Range
NE CORNER	13	77	30
NW CORNER	18	77	29
SE CORNER	12	77	30
SW CORNER	7	77	29