



Document 2019 531

Book 2019 Page 531 Type 06 043 Pages 1

Date 2/15/2019 Time 11:16:45AM

Rec Amt \$7.00

INDX
ANNO
SCAN

LISA SMITH, COUNTY RECORDER
MADISON COUNTY IOWA

CHEK

PREPARED BY & RETURN TO JACOB IRLMEIER, SNYDER & ASSOCIATES, INC. 1751 MADISON AVENUE, COUNCIL BLUFFS, IOWA 51503 (712) 322-3202

UNITED STATES PUBLIC LAND SURVEY CORNER CERTIFICATE OF

Land Survey Monuments situated in Section 6, Township 76, Range 29, of the Fifth Principal Meridian, MADISON, County, Iowa. Previously recorded in BK.375 PG.307 (ADAIR CO.) in County Recorder's Office.
(book, page, document number, ect.)

(Show reason for preparing this certificate, the evidence and detailed procedures used in establishing the corner positions and monumentation found or placed.)

Monument Description and Remarks:

NORTHWEST CORNER

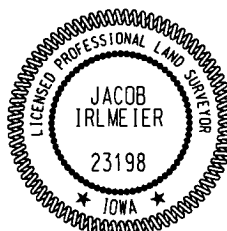
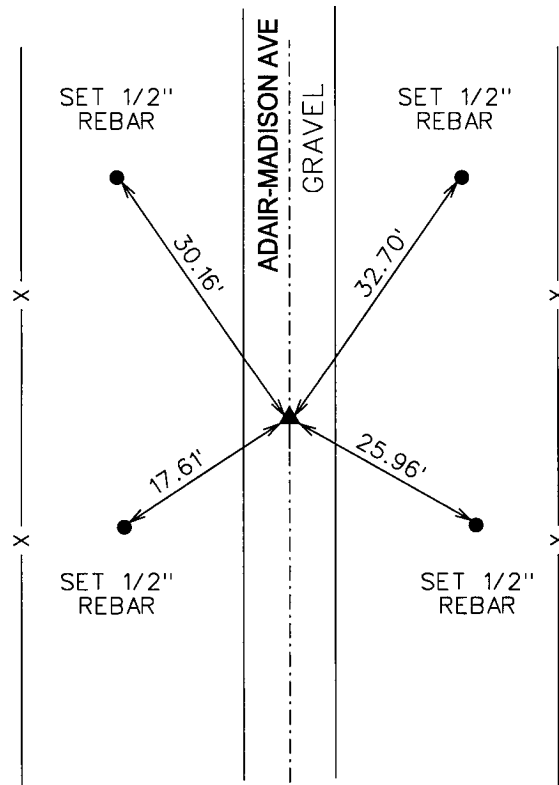
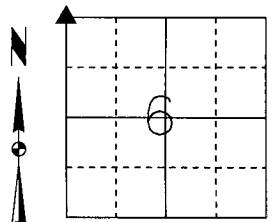
PREVIOUSLY RECORDED IN BOOK 375 PAGE 307 (ADAIR CO.). USED METAL LOCATOR TO SEARCH AREA AT CENTERLINE OF ROAD. FOUND 1/2" REBAR WITH YELLOW CAP #6808, 0.1' DEEP. PREVIOUSLY RECORDED REFERENCE TIES WERE MISSING. THIS CERTIFICATE IS BEING FILED DUE TO MISSING REFERENCE TIES AND IN CONJUNCTION WITH A SECTION SURVEY FOR MIDAMERICAN ENERGY.

Plan-View

(Show a minimum of three reference ties to durable physical objects, relevant monuments and physical conditions that will enable recovery of the corner.)

SPC IA SOUTH
US SURVEY FEET
IOWA RTN DERIVED
NAD83(2011)
(EPOCH 2010.00)
N: 517204.77
E: 1437032.44

NORTHWEST CORNER
FOUND 1/2" REBAR
YELLOW CAP #6808
0.1' DEEP



I hereby certify that this land surveying document was prepared and the related survey work was performed by me or under my direct personal supervision and that I am a duly licensed Professional Land Surveyor under the laws of the State of Iowa.

Jacob Irlmeier 1/29/19
Jacob Irlmeier, PLS Date

License Number 23198

My License Renewal Date is December 31, 2019

Pages or sheets covered by this seal:

SHEET 1 OF 1

List Corners to be Indexed

Corners	Section	Twp	Range
NE CORNER	1	76	30
SE CORNER	36	77	30
NW CORNER	6	76	29
SW CORNER	31	77	29