

INDX
 ANNO
 SCAN
 CHECK ✓

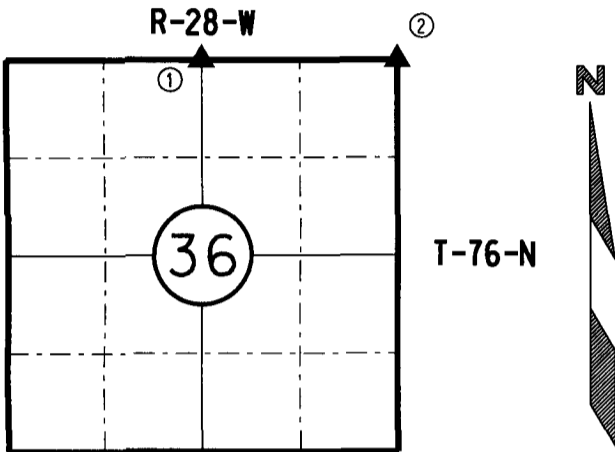
LISA SMITH, COUNTY RECORDER
 MADISON COUNTY IOWA

IOWA DEPARTMENT OF TRANSPORTATION 2210 E. 7TH ATLANTIC, IOWA 50022 712-243-2009

UNITED STATES PUBLIC LAND SURVEY CORNER CERTIFICATE

Section 36 Township 76N Range 28W County MADISON

Certificate Prepared For: RE-REFERENCING SECTION CORNERS ALONG
HWY 169 FOR HMA OVERLAY PROJECT #STPN-169-3(44)--2R-61



I hereby certify that this land surveying document was prepared by me and the related survey work was performed by me or under my direct supervision and that I am a duly licensed Professional Land Surveyor under the laws of the State of Iowa.

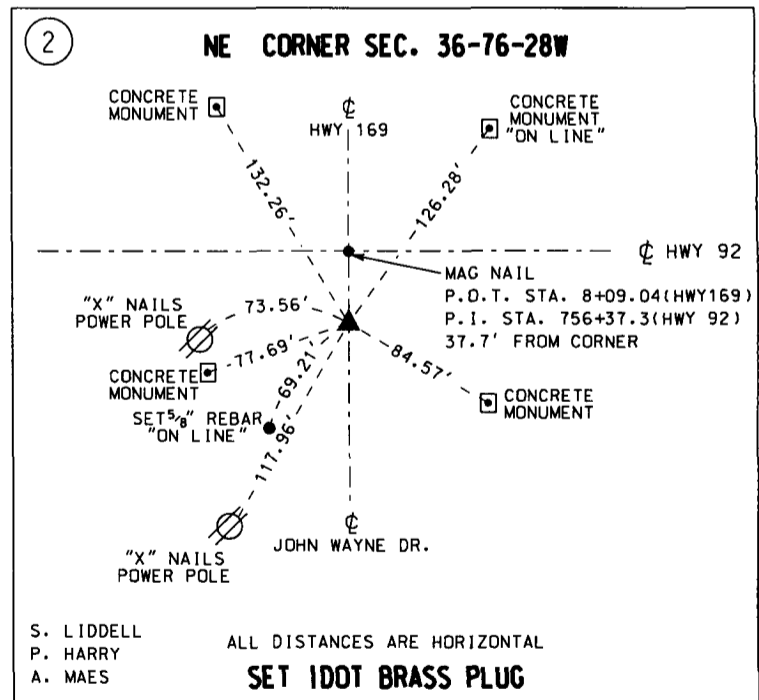
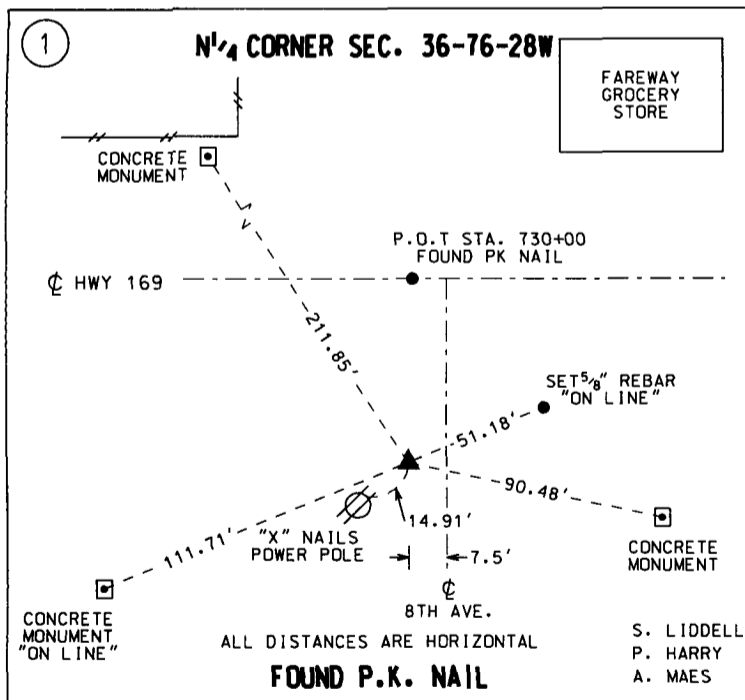
William J. Fox 10-7-18
 WILLIAM J. FOX Date

License number 15482
 Pages covered by this seal 1
 My License Renewal date is December 31, 2019

MADISON COUNTY

MONUMENT DESCRIPTION AND REMARKS:

- (1) Found PK nail using recorded corner certificate by Charles Vance PLS # 5041
- (2) set Iowa DOT brass plug using Iowa DOT concrete monument tie information.



LIST CORNERS TO BE INDEXED:			
CORNERS	SECTION	TWP.	RANGE
N ¹ / ₄	36	76N	28W
NE COR	36	76N	28W