



Document 2018 3708

Book 2018 Page 3708 Type 06 043 Pages 1  
Date 11/15/2018 Time 10:36:12AM  
Rec Amt \$7.00

INDX  
ANNO  
SCAN  
CHEK

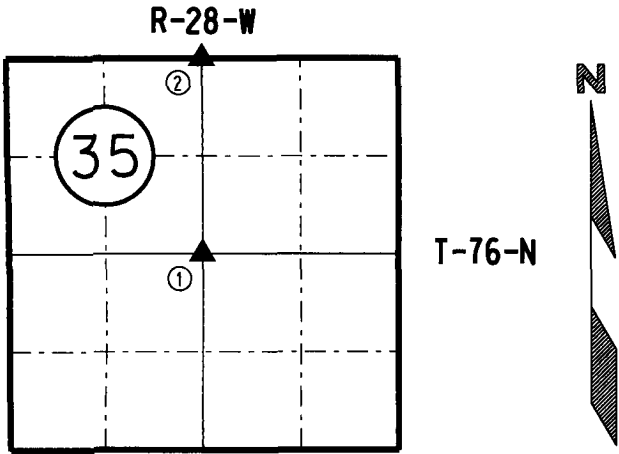
LISA SMITH, COUNTY RECORDER  
MADISON COUNTY IOWA

IOWA DEPARTMENT OF TRANSPORTATION 2210 E. 7TH ATLANTIC, IOWA 50022 712-243-2009

# UNITED STATES PUBLIC LAND SURVEY CORNER CERTIFICATE

Section 35 Township 76N Range 28W County MADISON

Certificate Prepared For: RE-REFERENCING SECTION CORNERS ALONG  
HWY 169 FOR HMA OVERLAY PROJECT #STPN-169-3(44)--2R-61



I hereby certify that this land surveying document was prepared by me and the related survey work was performed by me or under my direct supervision and that I am a duly licensed Professional Land Surveyor under the laws of the State of Iowa.

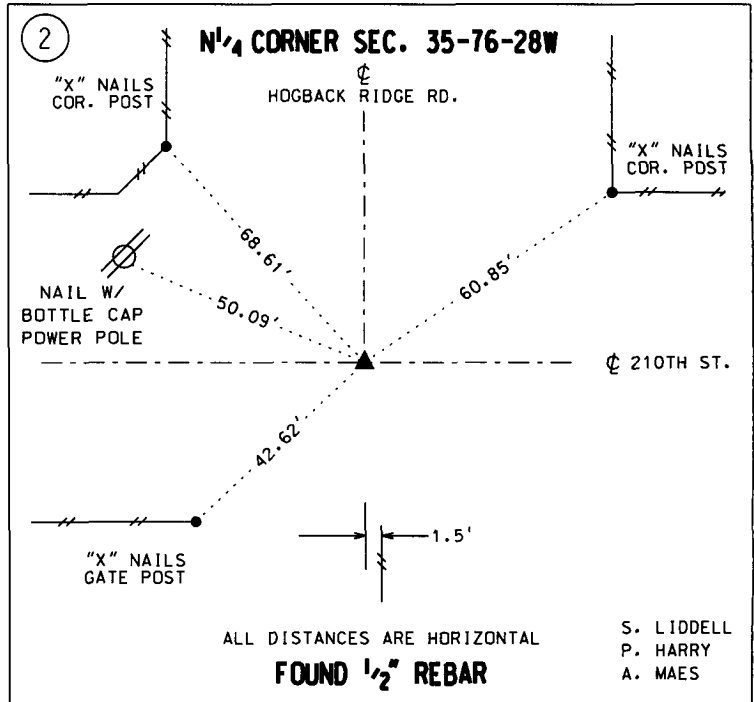
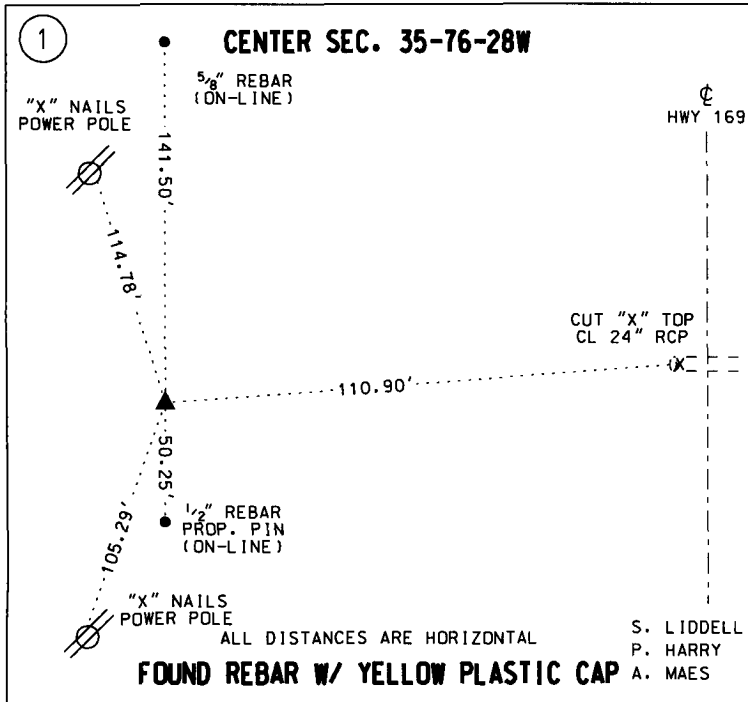
*William J. Fox*  
WILLIAM J. FOX Date 10-1-18

License number 15482  
Pages covered by this seal 1  
My License Renewal date is December 31, 2019

MADISON COUNTY

### MONUMENT DESCRIPTION AND REMARKS:

- (1) Found rebar w/ yellow plastic cap # 8105 using recorded corner certificate by J.M. Hochstetler L.S. # 6808.
- (2) Found 1/2" rebar using recorded corner certificate by Charles T. Vance.



LIST CORNERS TO BE INDEXED:			
CORNERS	SECTION	TWP.	RANGE
CENTER	35	76N	28W
N 1/4	35	76N	28W