

Prepared by and return to:
William J. Fox PLS
Iowa Department of Transportation
District 4 Office
2210 E. 7th Street
Atlantic, IA 50022
Phone 712-243-7661

LISA SMITH, COUNTY RECORDER
MADISON COUNTY IOWA

**UNITED STATES PUBLIC LAND SURVEY CORNER CERTIFICATE
OF**

Land Survey Monuments situated in Section 13, Township 76N North, Range 28W West, of the Fifth Principal Meridian, MADISON County, Iowa. Previously recorded in _____ in the County Recorder's Office.

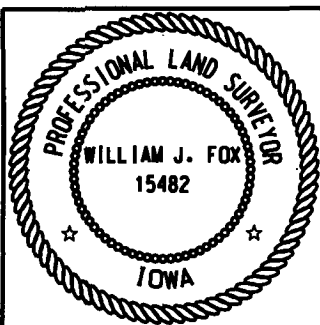
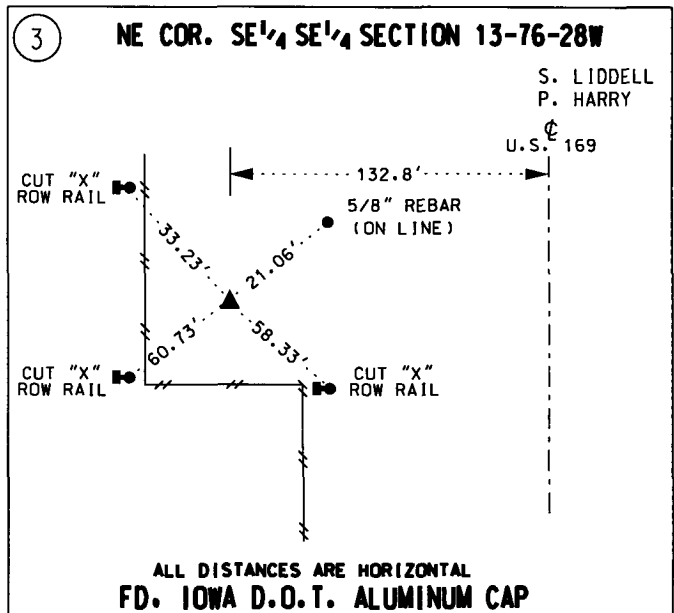
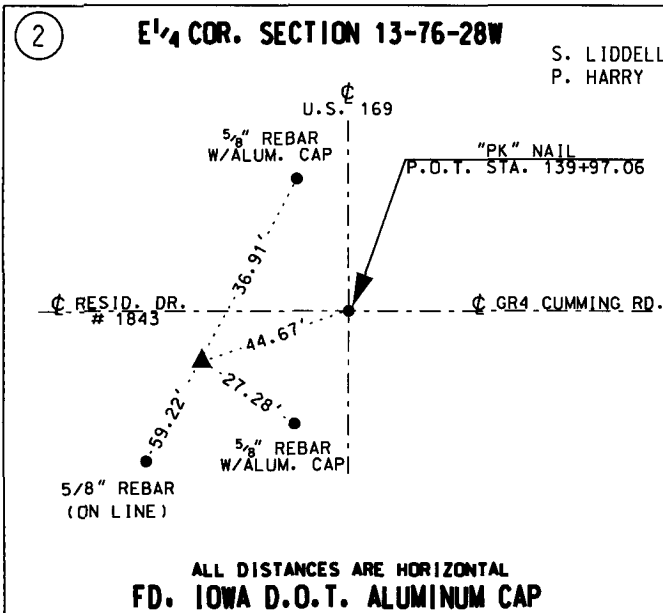
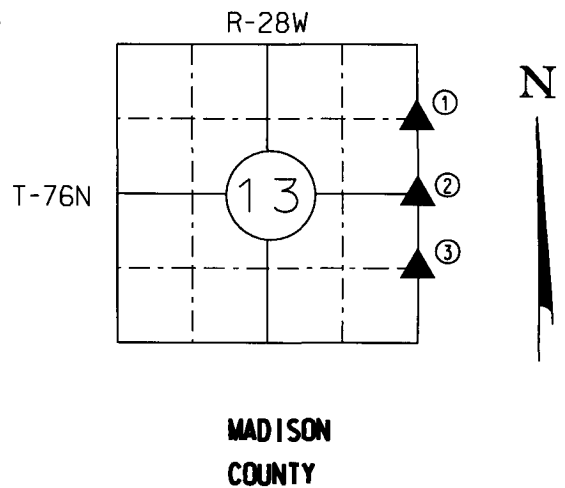
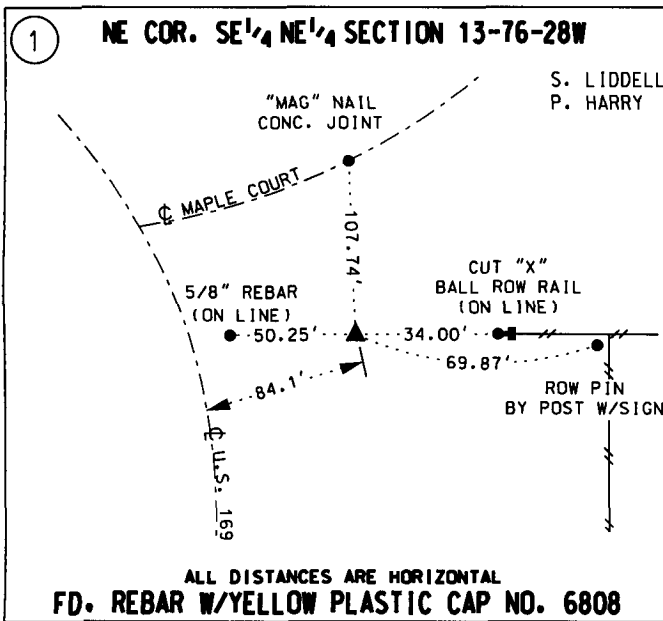
Monument Description and Remarks:

(1) Found rebar with fellow plastic cap no. 6808 flush with ground. Verified by using existing D.O.T. as-builts plans and acquisition plats.

(2) Found Iowa D.O.T. aluminum cap, 0.2 foot deep. Verified by using existing D.O.T. as-builts plans and acquisition plats.

(3) Found Iowa D.O.T. aluminum cap, 0.5 foot deep. Verified by using existing D.O.T. as-builts plans and acquisition plats.

PLAN - VIEW



I hereby certify that this land surveying document was prepared by me or under my direct personal supervision, and that I am a duly licensed Professional Land Surveyor under the laws of the State of Iowa.

William J. Fox 10-1-18
William J. Fox License No. 15482 Date
My license renewal date is December 31, 2019

Corner(s) to be Indexed			
Corner(s)	Section	Twp.	Range
NE CORNER SE 1/4 NE 1/4	13	76	28W
E 1/4 CORNER	13	76	28W
NE CORNER SE 1/4 SE 1/4	13	76	28W