



Document 2018 3706

Book 2018 Page 3706 Type 06 043 Pages 1
Date 11/15/2018 Time 10:36:04AM
Rec Amt \$7.00

INDX
ANNO
SCAN
CHEK

LISA SMITH, COUNTY RECORDER
MADISON COUNTY IOWA

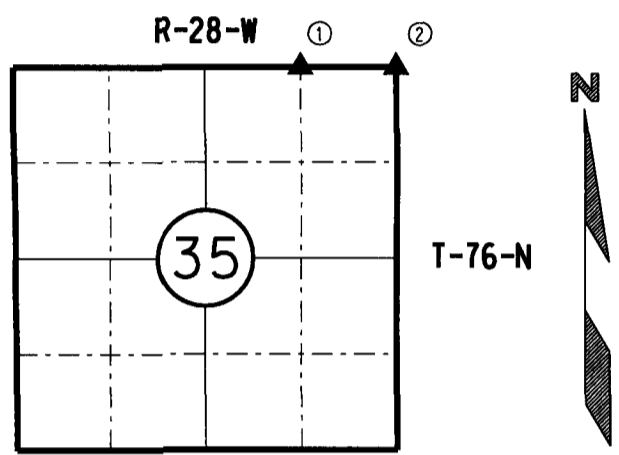
IOWA DEPARTMENT OF TRANSPORTATION 2210 E. 7TH ATLANTIC, IOWA 50022 712-243-2009

UNITED STATES PUBLIC LAND SURVEY CORNER CERTIFICATE

Section 35 Township 76N Range 28W County MADISON



Certificate Prepared For: RE-REFERENCING SECTION CORNERS ALONG HWY 169 FOR HMA OVERLAY PROJECT #STPN-169-3(44)--2R-61



I hereby certify that this land surveying document was prepared by me and the related survey work was performed by me or under my direct supervision and that I am a duly licensed Professional Land Surveyor under the laws of the State of Iowa.

William J. Fox 10-1-18
WILLIAM J. FOX Date

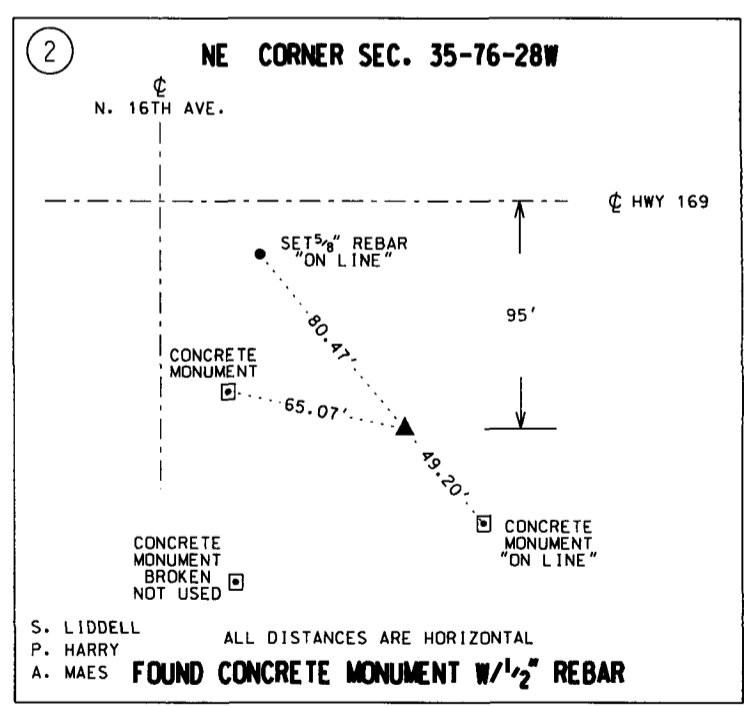
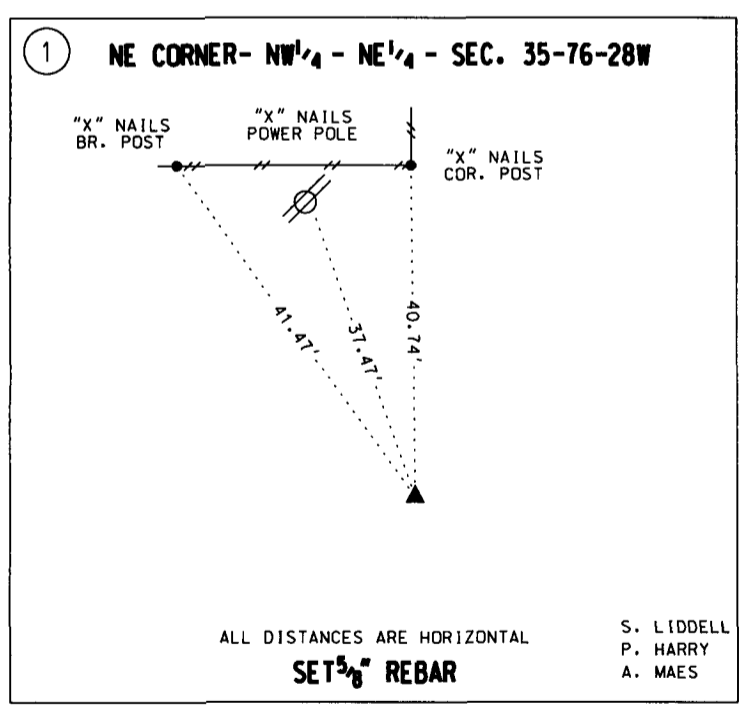
LICENSED PROFESSIONAL LAND SURVEYOR
WILLIAM J. FOX
15482
IOWA

License number 15482
Pages covered by this seal 1
My License Renewal date is December 31, 2019

MADISON COUNTY

MONUMENT DESCRIPTION AND REMARKS:

- (1) Found bent 1/2" rebar using recorded corner certificate by J.M. Hochstetler L.S. # 6808. Replaced w/ 5/8" rebar 0.4' deep
- (2) Found concrete monument w/1/2" rebar 1.0' deep using Iowa DOT as-built information.



LIST CORNERS TO BE INDEXED:

CORNERS	SECTION	TWP.	RANGE
NE COR. NW 1/4 NE 1/4	35	76N	28W
N 1/4	35	76N	28W