

LISA SMITH, COUNTY RECORDER
MADISON COUNTY IOWA

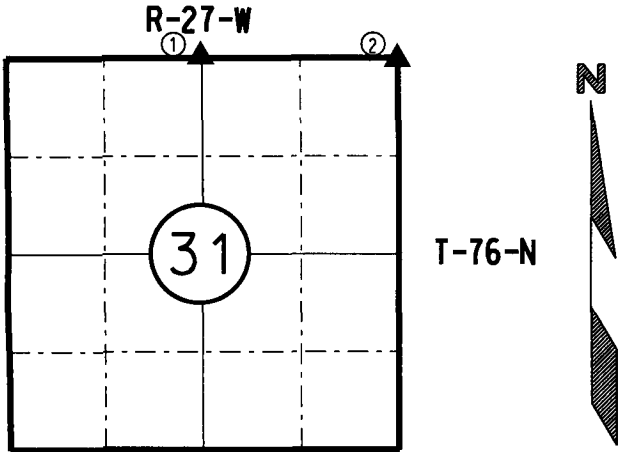
IOWA DEPARTMENT OF TRANSPORTATION 2210 E. 7TH ATLANTIC, IOWA 50022 712-243-2009

UNITED STATES PUBLIC LAND SURVEY CORNER CERTIFICATE

Section 31 Township 76N Range 27W County MADISON



Certificate Prepared For: RE-REFERENCING SECTION CORNERS ALONG
PRIMARY ROAD IA. 92.



I hereby certify that this land surveying document was prepared by me or under my direct supervision and that I am a duly licensed Professional Land Surveyor under the laws of the State of Iowa.

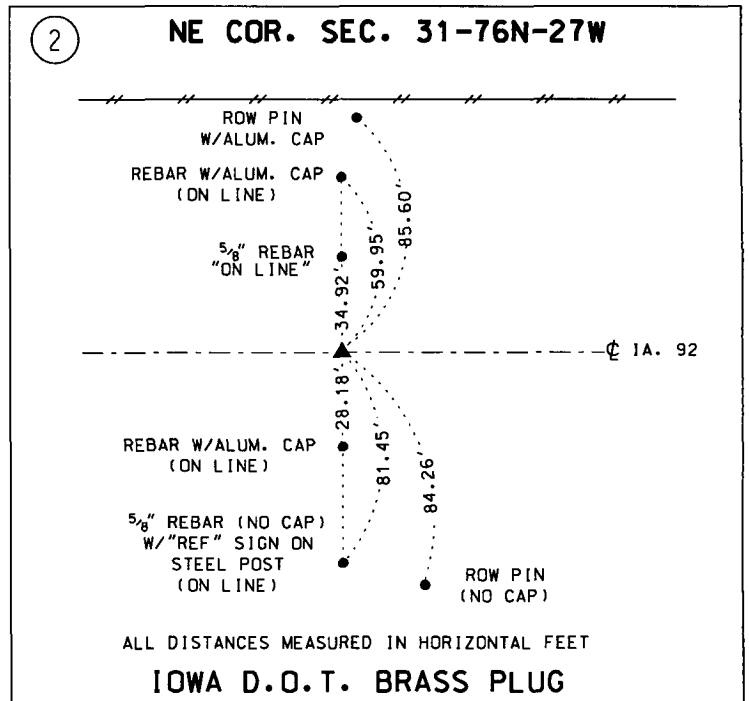
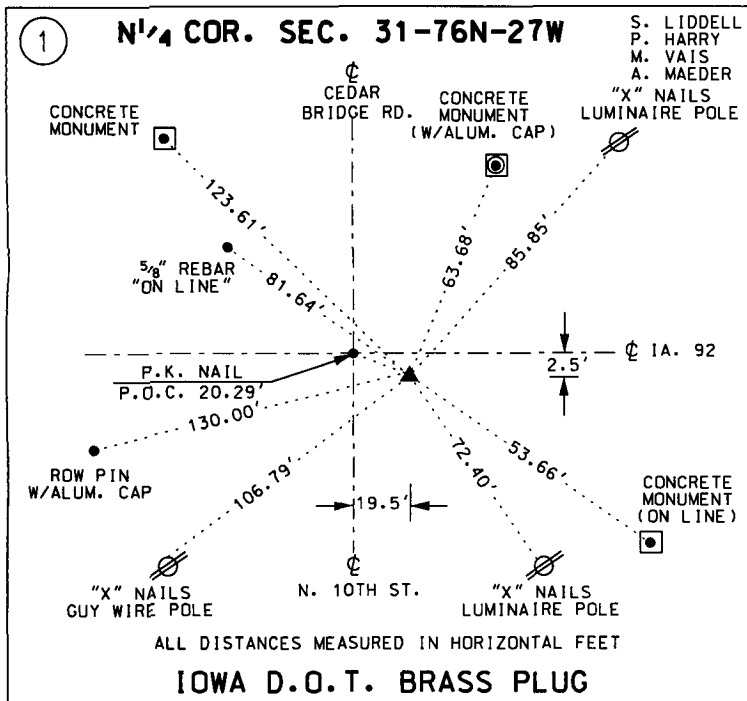
William J. Fox 10-1-18
WILLIAM J. FOX Date

License number 15482
Pages covered by this seal 1
My License Renewal date is December 31, 2019

MADISON COUNTY

MONUMENT DESCRIPTION AND REMARKS:

- (1) Found Iowa D.O.T. brass plug in asphalt pavement of Iowa 92. Verified by using existing D.O.T. ties.
- (2) Found Iowa D.O.T. brass plug in asphalt pavement. Verified by using existing D.O.T. ties from construction as-builts plans and acquisition plats.



LIST CORNERS TO BE INDEXED:			
CORNERS	SECTION	TWP.	RANGE
N ¹ / ₄ COR.	31	76N	27W
NE COR.	31	76N	27W