



Document 2018 3703

Book 2018 Page 3703 Type 06 043 Pages 1
Date 11/15/2018 Time 10:35:52AM
Rec Amt \$7.00

INDX
ANNO
SCAN

LISA SMITH, COUNTY RECORDER
MADISON COUNTY IOWA

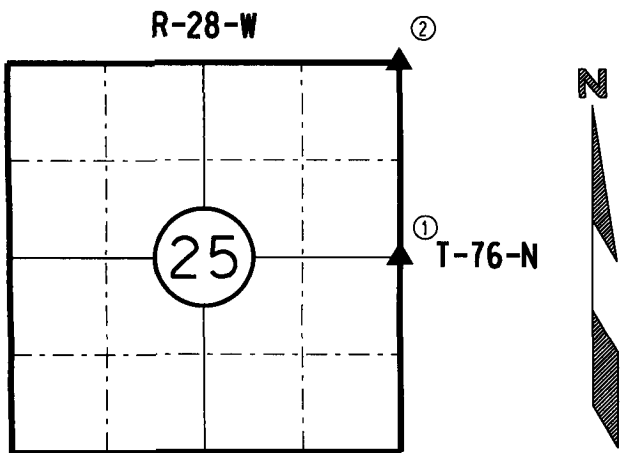
CHEK

IOWA DEPARTMENT OF TRANSPORTATION 2210 E. 7TH ATLANTIC, IOWA 50022 712-243-2009

UNITED STATES PUBLIC LAND SURVEY CORNER CERTIFICATE

Section 25 Township 76N Range 28W County MADISON

Certificate Prepared For: RE-REFERENCING SECTION CORNERS ALONG
HWY 169 FOR HMA OVERLAY PROJECT #STPN-169-3(44)--2R-61



I hereby certify that this land surveying document was prepared by me and the related survey work was performed by me or under my direct supervision and that I am a duly licensed Professional Land Surveyor under the laws of the State of Iowa.

William J. Fox 10-1-18
WILLIAM J. FOX Date

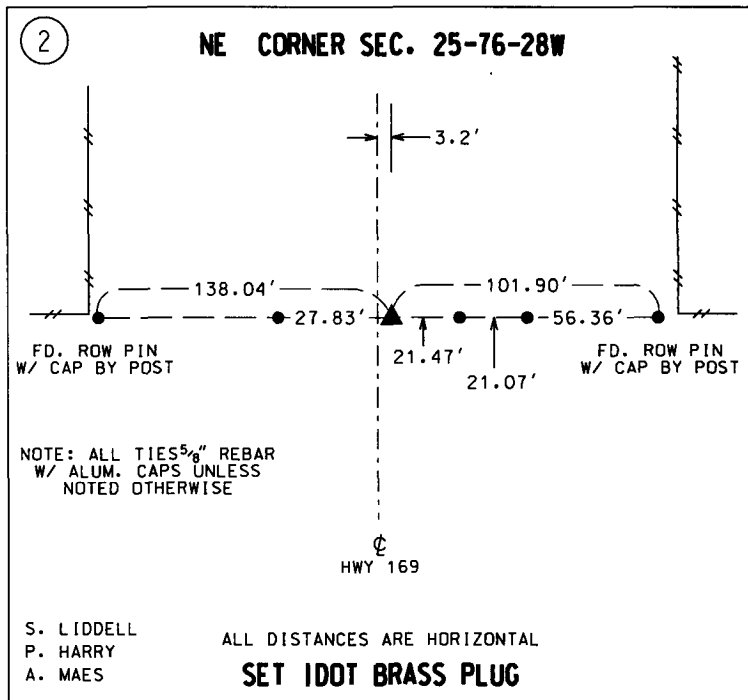
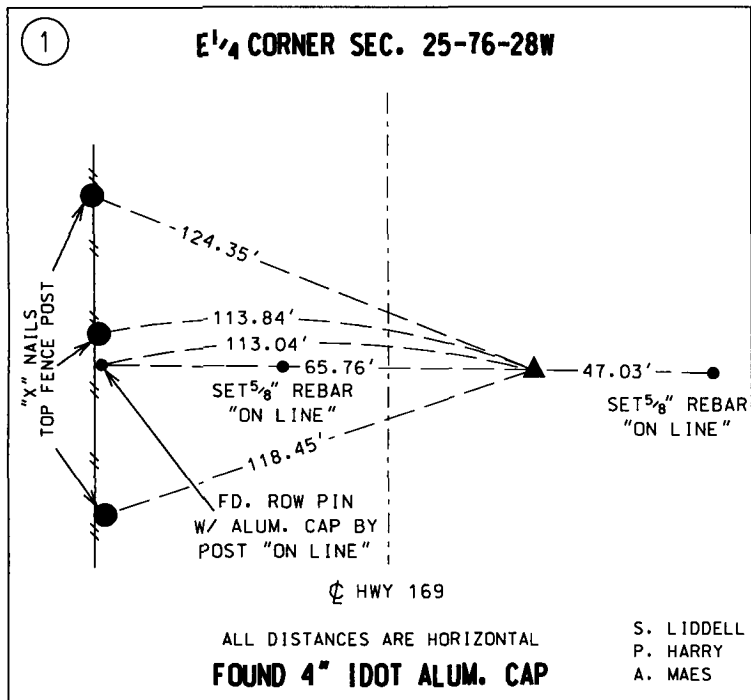
License number 15482
Pages covered by this seal 1
My License Renewal date is December 31, 2019

MADISON
COUNTY

MONUMENT DESCRIPTION AND REMARKS:

(1) Found 4" Iowa DOT aluminum cap, 1.1' deep, using Iowa DOT reference ties.

(2) set Iowa DOT brass plug using Iowa DOT on-line rebar ties.



LIST CORNERS TO BE INDEXED:			
CORNERS	SECTION	TWP.	RANGE
E 1/4	25	76N	28W
NE COR	25	76N	28W