



Document 2018 2114

Book 2018 Page 2114 Type 06 043 Pages 1
Date 7/05/2018 Time 1:19:18PM
Rec Amt \$7.00

INDX
ANNO
SCAN

LISA SMITH, COUNTY RECORDER
MADISON COUNTY IOWA

CHEK

PREPARED BY - JOSEPH P. RUESCHENBERG - SUNDQUIST ENGINEERING - 120 S. MAIN, DENISON, IOWA 51442 - PHONE (712) 263-8118

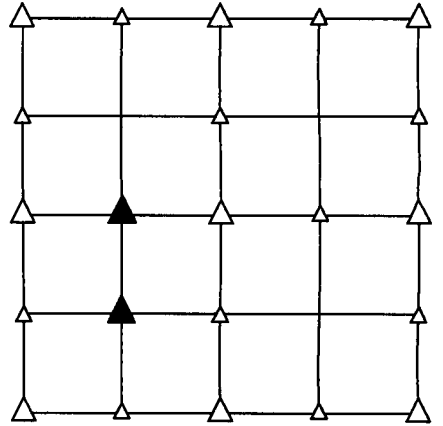
UNITED STATES PUBLIC LAND SURVEY CORNER CERTIFICATE OF

LAND SURVEY MONUMENT SITUATED IN SECTION 9, T 76 N, R 26 W OF
THE 5TH P.M., MADISON COUNTY, IOWA.
PREVIOUSLY RECORDED IN BOOK _____, PAGE _____, OTHER _____

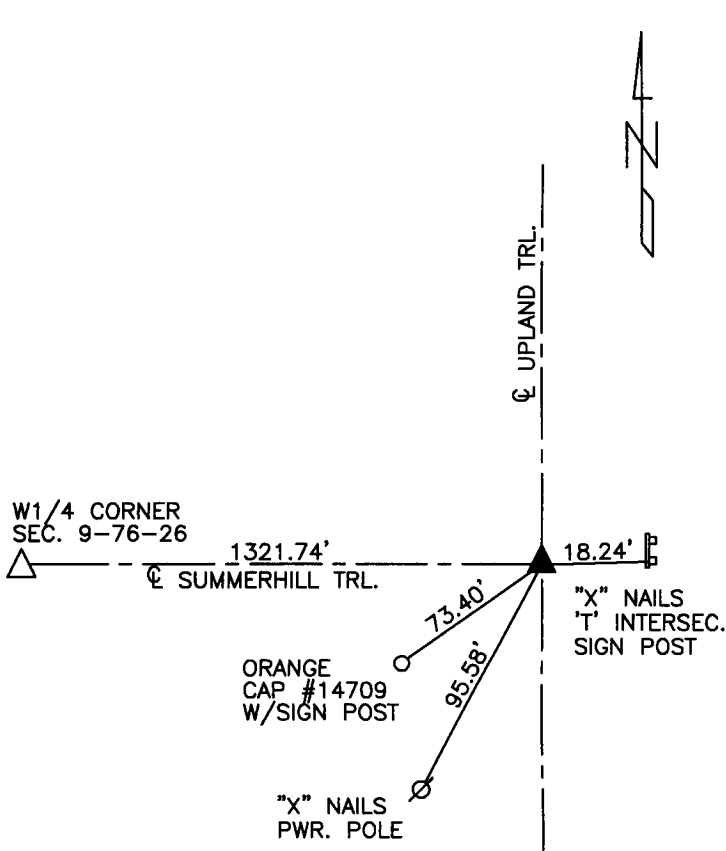
MONUMENT DESCRIPTION AND REMARKS

NW CORNER
NE1/4 SW1/4 - FOUND IRON PIN W/YELLOW CAP (UNREADABLE)
0.4' DEEP.

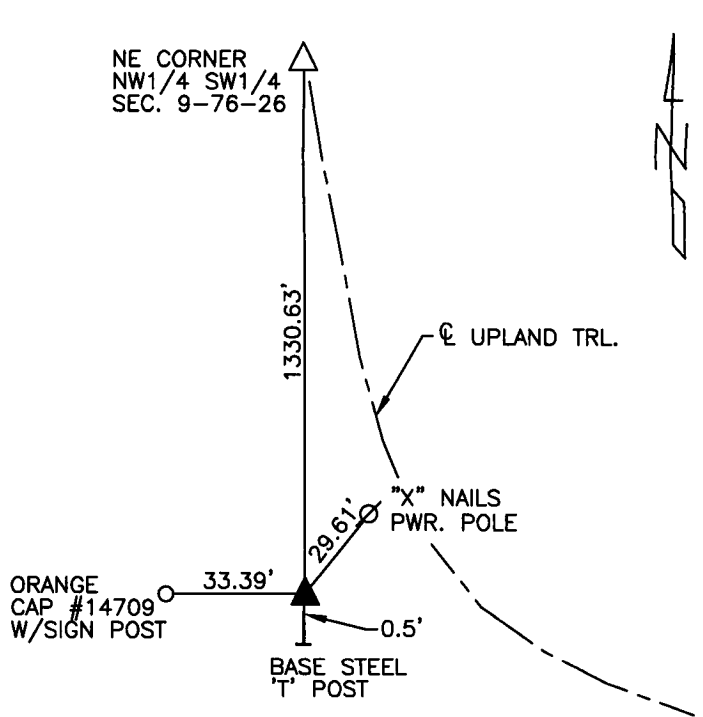
SE CORNER
NW1/4 SW1/4 - FOUND IRON PIN W/YELLOW CAP #6808 0.5' DEEP.



PLAN VIEW SHOWING RELATIVE LOCATION OF MONUMENT AND REFERENCE POINTS.



DISTANCES PLUMB CHAINED
NW CORNER NE1/4 SW1/4
SECTION 9-76-26

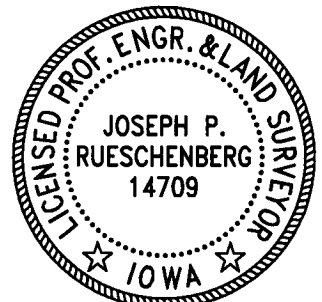


DISTANCES PLUMB CHAINED
SE CORNER NW1/4 SW1/4
SECTION 9-76-26

I HEREBY CERTIFY THAT THIS LAND SURVEYING DOCUMENT WAS PREPARED AND THE RELATED SURVEY WORK WAS PERFORMED BY ME OR UNDER MY DIRECT PERSONAL SUPERVISION AND THAT I AM A DULY LICENSED LAND SURVEYOR UNDER THE LAWS OF THE STATE OF IOWA.

Joseph P. Rueschenberg 7-3-2018
JOSEPH P. RUESCHENBERG DATE

IA LICENSE NO. 14709 EXP. DATE DECEMBER 31, 2018



SE PROJECT NO. 21418
DRAWN BY: LLL