



PREPARED BY - JOSEPH P. RUESCHENBERG - SUNDQUIST ENGINEERING - 120 S. MAIN, DENISON, IOWA 51442 - PHONE (712) 263-8118

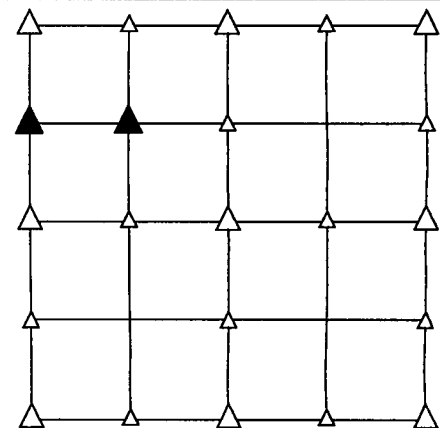
UNITED STATES PUBLIC LAND SURVEY CORNER CERTIFICATE
OF

LAND SURVEY MONUMENT SITUATED IN SECTION 9, T 76 N, R 26 W OF
THE 5TH P.M., MADISON COUNTY, IOWA.
PREVIOUSLY RECORDED IN BOOK , PAGE , OTHER

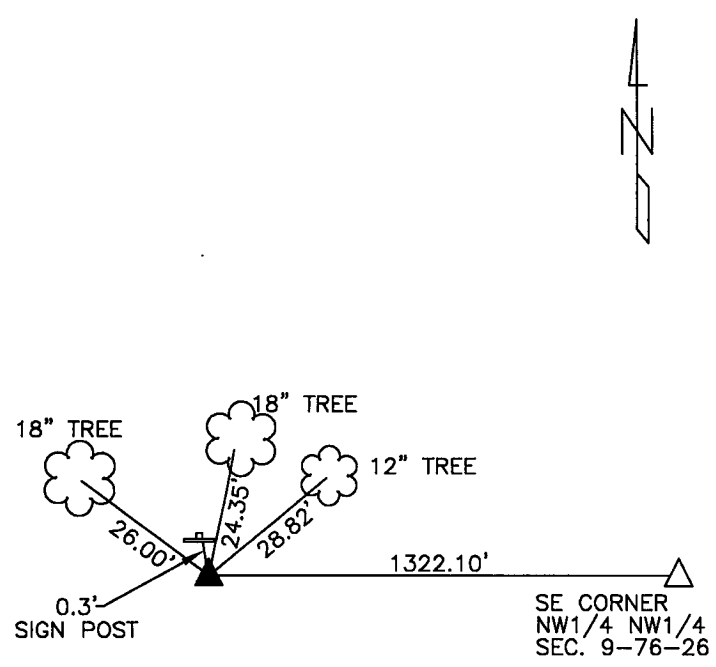
MONUMENT DESCRIPTION AND REMARKS

NW CORNER
SW1/4 NW1/4 - FOUND IRON PIN W/YELLOW CAP #6808 FLUSH.

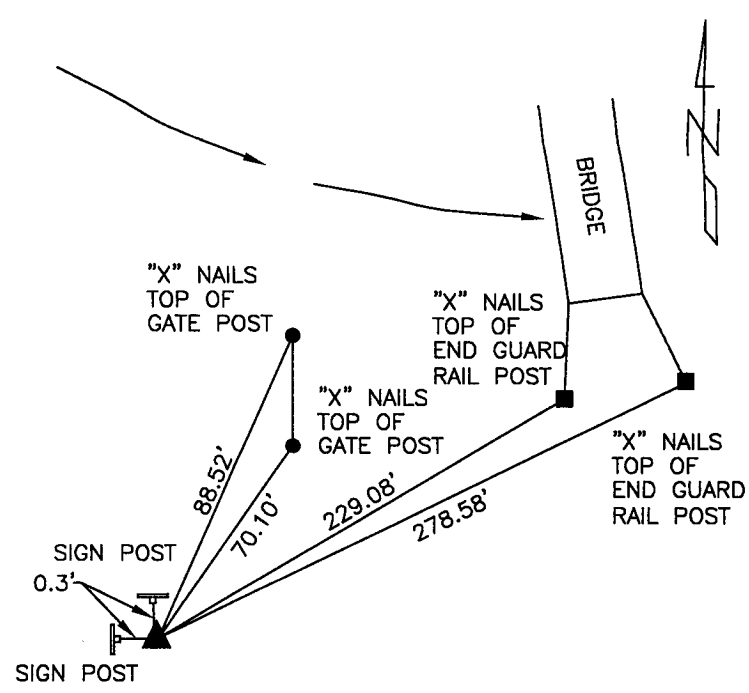
SE CORNER
NW1/4 NW1/4 - FOUND IRON PIN W/YELLOW CAP #6808 FLUSH.



PLAN VIEW SHOWING RELATIVE LOCATION OF MONUMENT AND REFERENCE POINTS.



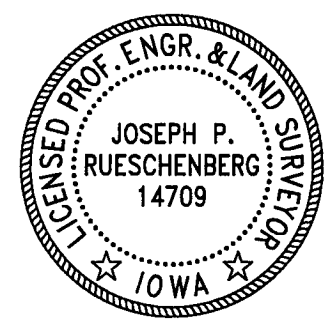
DISTANCES PLUMB CHAINED
NW CORNER SW1/4 NW1/4
SECTION 9-76-26



DISTANCES PLUMB CHAINED
SE CORNER NW1/4 NW1/4
SECTION 9-76-26

I HEREBY CERTIFY THAT THIS LAND SURVEYING DOCUMENT WAS PREPARED
AND THE RELATED SURVEY WORK WAS PERFORMED BY ME OR UNDER MY
DIRECT PERSONAL SUPERVISION AND THAT I AM A DULY LICENSED LAND
SURVEYOR UNDER THE LAWS OF THE STATE OF IOWA.

Joseph P. Rueschenberg 7-3-2018
JOSEPH P. RUESCHENBERG DATE
IA LICENSE NO. 14709 EXP. DATE DECEMBER 31, 2018



SE PROJECT NO. 21418
DRAWN BY: LLL