



Document 2018 2112

Book 2018 Page 2112 Type 06 043 Pages 1
Date 7/05/2018 Time 1:19:16PM
Rec Amt \$7.00

INDX
ANNO
SCAN
CHEK

LISA SMITH, COUNTY RECORDER
MADISON COUNTY IOWA

PREPARED BY - JOSEPH P. RUESCHENBERG - SUNDQUIST ENGINEERING - 120 S. MAIN, DENISON, IOWA 51442 - PHONE (712) 263-8118

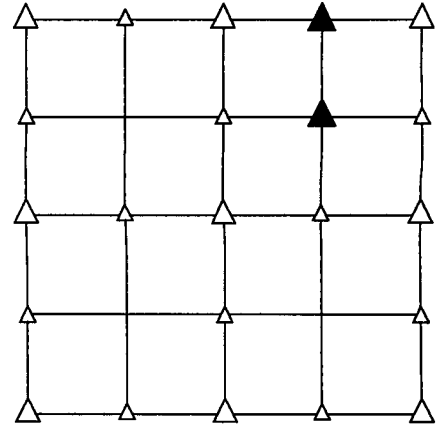
UNITED STATES PUBLIC LAND SURVEY CORNER CERTIFICATE OF

LAND SURVEY MONUMENT SITUATED IN SECTION 8, T 76 N, R 26 W OF
THE 5TH P.M., MADISON COUNTY, IOWA.
PREVIOUSLY RECORDED IN BOOK _____, PAGE _____, OTHER _____

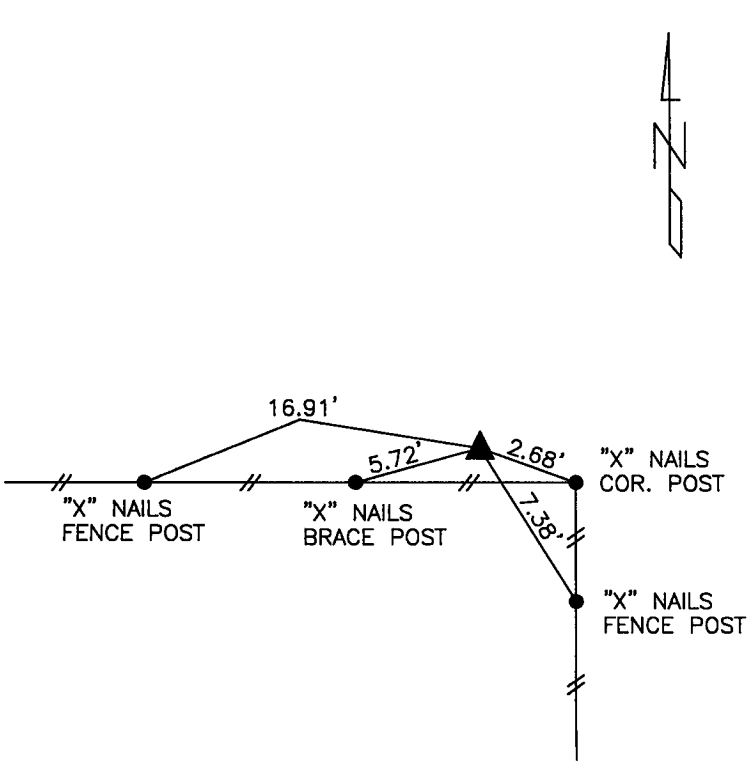
MONUMENT DESCRIPTION AND REMARKS

NW CORNER
NE1/4 NE1/4 - FOUND IRON PIN W/YELLOW CAP #6808 FLUSH, 0.3'
NORTH OF E-W FENCE LINE.

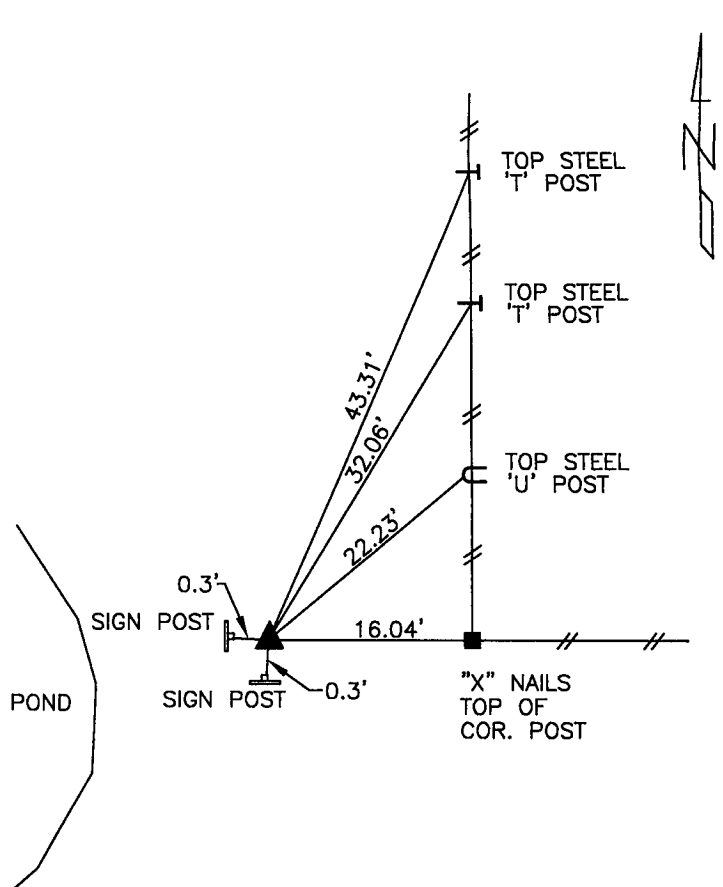
NW CORNER
SE1/4 NE1/4 - FOUND IRON PIN W/YELLOW CAP #6808 2.3' DEEP.



PLAN VIEW SHOWING RELATIVE LOCATION OF MONUMENT AND REFERENCE POINTS.



DISTANCES PLUMB CHAINED
NW CORNER NE1/4 NE1/4
SECTION 8-76-26



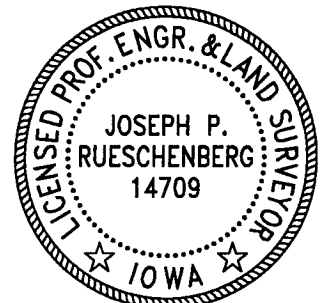
DISTANCES PLUMB CHAINED
NW CORNER SE1/4 NE1/4
SECTION 8-76-26

I HEREBY CERTIFY THAT THIS LAND SURVEYING DOCUMENT WAS PREPARED AND THE RELATED SURVEY WORK WAS PERFORMED BY ME OR UNDER MY DIRECT PERSONAL SUPERVISION AND THAT I AM A DULY LICENSED LAND SURVEYOR UNDER THE LAWS OF THE STATE OF IOWA.

Joseph P. Rueschenberg 7-3-2018
JOSEPH P. RUESCHENBERG DATE

IA LICENSE NO. 14709

EXP. DATE DECEMBER 31, 2018



SE PROJECT NO. 21418
DRAWN BY: LLL