



LISA SMITH, COUNTY RECORDER
MADISON COUNTY IOWA

PREPARED BY - JOSEPH P. RUESCHENBERG - SUNDQUIST ENGINEERING - 120 S. MAIN, DENISON, IOWA 51442 - PHONE (712) 263-8118

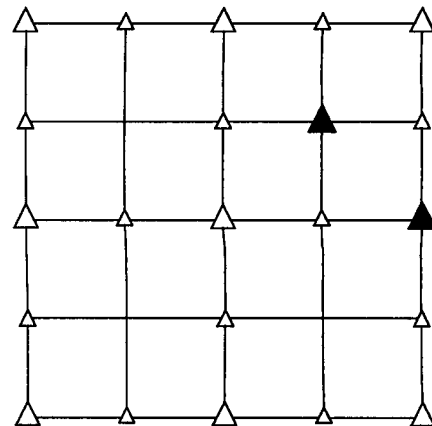
UNITED STATES PUBLIC LAND SURVEY CORNER CERTIFICATE OF

LAND SURVEY MONUMENT SITUATED IN SECTION 5, T 76 N, R 26 W OF
THE 5TH P.M., MADISON COUNTY, IOWA.
PREVIOUSLY RECORDED IN BOOK _____, PAGE _____, OTHER _____

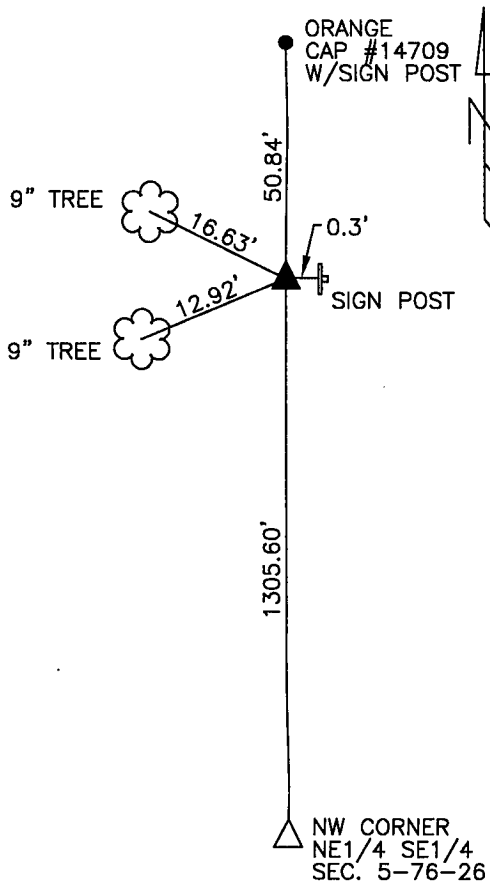
MONUMENT DESCRIPTION AND REMARKS

SW CORNER
NE1/4 NE1/4 - FOUND IRON PIN W/YELLOW CAP #6808 FLUSH.

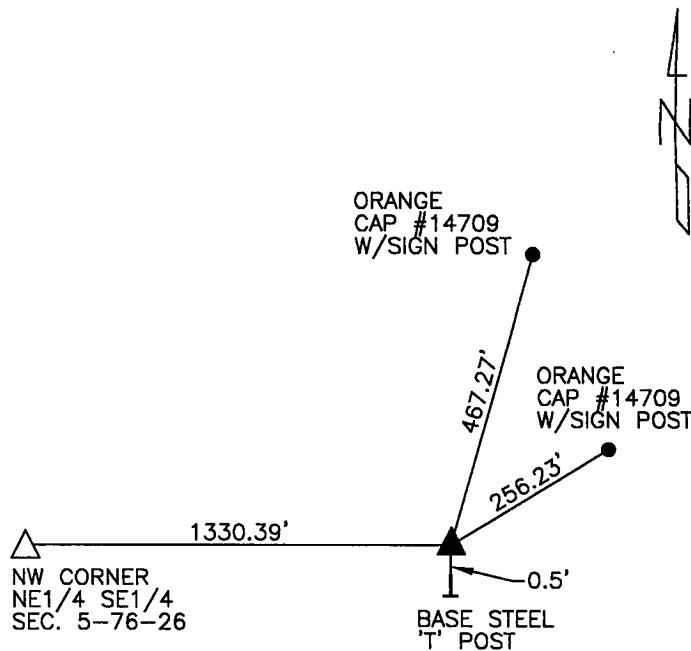
E1/4 CORNER - FOUND IRON PIN W/YELLOW CAP #6808 0.4' DEEP.



PLAN VIEW SHOWING RELATIVE LOCATION OF MONUMENT AND REFERENCE POINTS.

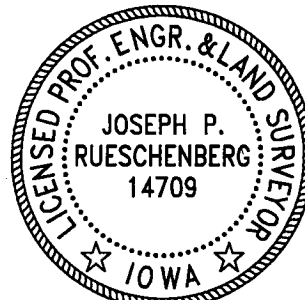


DISTANCES PLUMB CHAINED
SW CORNER NE1/4 NE1/4
SECTION 5-76-26



DISTANCES PLUMB CHAINED
E1/4 CORNER SECTION 5-76-26

I HEREBY CERTIFY THAT THIS LAND SURVEYING DOCUMENT WAS PREPARED AND THE RELATED SURVEY WORK WAS PERFORMED BY ME OR UNDER MY DIRECT PERSONAL SUPERVISION AND THAT I AM A DULY LICENSED LAND SURVEYOR UNDER THE LAWS OF THE STATE OF IOWA.



Joseph P. Rueschenberg 7-3-2018
JOSEPH P. RUESCHENBERG DATE

IA LICENSE NO. 14709

EXP. DATE DECEMBER 31, 2018

SE PROJECT NO. 21418
DRAWN BY: LLL