



Document 2018 1656

Book 2018 Page 1656 Type 06 043 Pages 1  
Date 5/25/2018 Time 9:17:52AM  
Rec Amt \$7.00

INDX  
ANNO  
SCAN  
CHEK

LISA SMITH, COUNTY RECORDER  
MADISON COUNTY IOWA

PREPARED BY: CRAIG S. BOLDMAN 521 WEST GREEN STREET, WINTERSET, IA 50273 PHONE (515)462-9242

### UNITED STATES PUBLIC LAND SURVEY CORNER CERTIFICATE

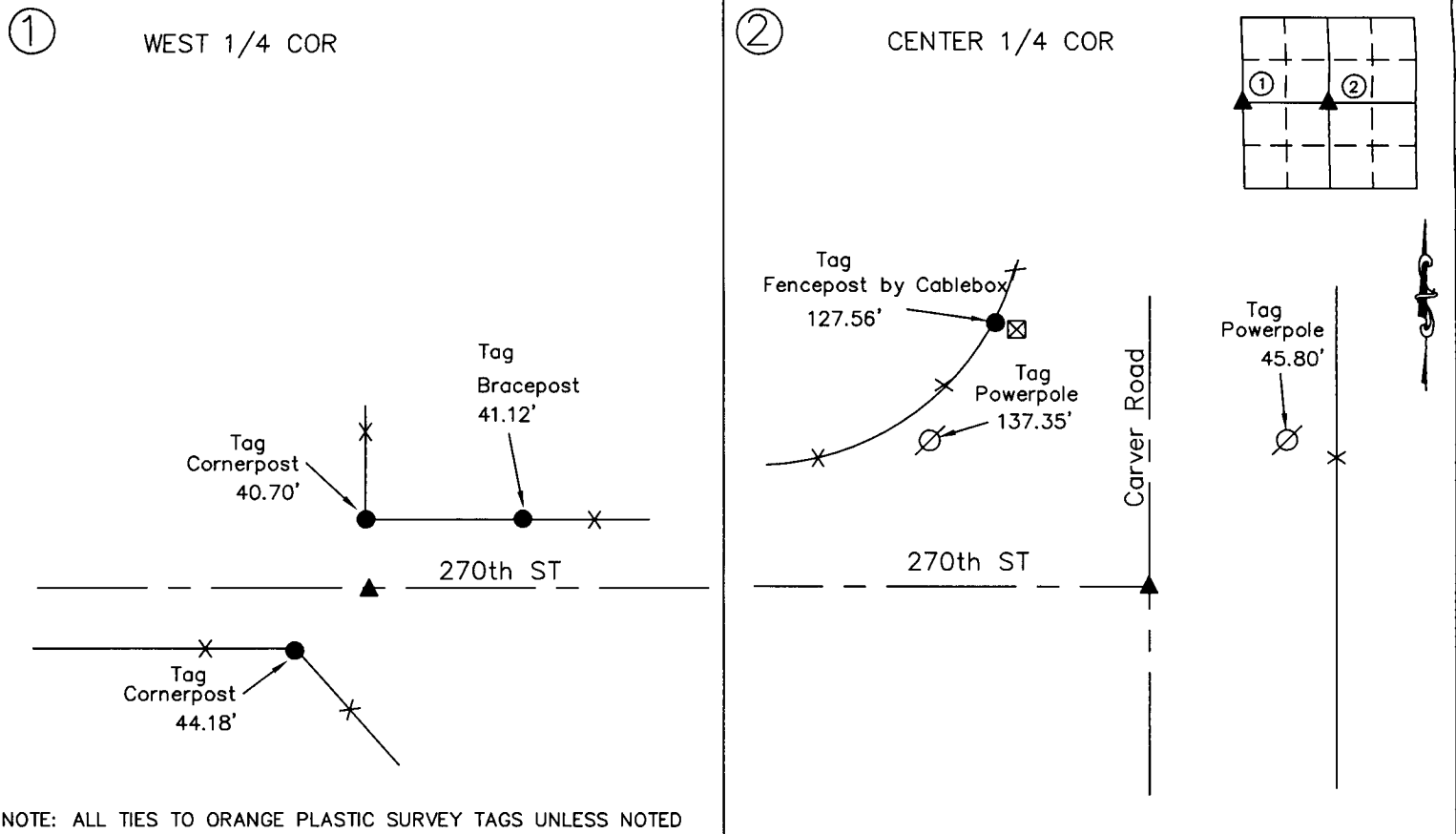
Land Survey Monuments situated in Section 34, Township 75N, Range 28W, the Fifth Principal Meridian, Madison County, Iowa.  
Previously recorded in None in County Recorder's Office

(Show reason for preparing this certificate, the evidence and detailed procedures used in establishing the corner positions & monumentation found or placed)

#### Monument Description and Remarks:

Found 1/2" pins at ① and ② from information in E.B. Hiatt field notes, at County Engineers Office.

#### PLAN-VIEW



NOTE: ALL TIES TO ORANGE PLASTIC SURVEY TAGS UNLESS NOTED

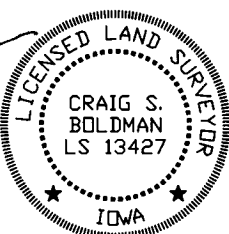
I HEREBY CERTIFY THAT THIS LAND SURVEYING DOCUMENT WAS PREPARED AND THE RELATED SURVEY WORK WAS PERFORMED BY ME OR UNDER MY DIRECT PERSONAL SUPERVISION AND THAT I AM A DULY LICENSED LAND SURVEYOR UNDER THE LAWS OF THE STATE OF IOWA

SIGNATURE Craig S. Boldman  
CRAIG S. BOLDMAN

DATE: 5/25/18 LICENSE NO 13427

MY RENEWAL DATE IS DECEMBER 31, 2018

COVERS SHEETS 1



#### CORNERS TO BE INDEXED

Corners	Section	Township	Range
C 1/4	34	75N	28W
W 1/4	34	75N	28W
E 1/4	33	75N	28W

Project No. 18022

2