



Document 2018 1655

Book 2018 Page 1655 Type 06 043 Pages 1
Date 5/25/2018 Time 9:16:52AM
Rec Amt \$7.00

INDX
ANNO
SCAN
CHEK

LISA SMITH, COUNTY RECORDER
MADISON COUNTY IOWA

PREPARED BY: CRAIG S. BOLDMAN 521 WEST GREEN STREET, WINTERSET, IA 50273 PHONE (515)462-9242

UNITED STATES PUBLIC LAND SURVEY CORNER CERTIFICATE

Land Survey Monuments situated in Section 33, Township 75N, Range 28W, the Fifth Principal Meridian, Madison County, Iowa.
Previously recorded in None in County Recorder's Office

(Show reason for preparing this certificate, the evidence and detailed procedures used in establishing the corner positions & monumentation found or placed)

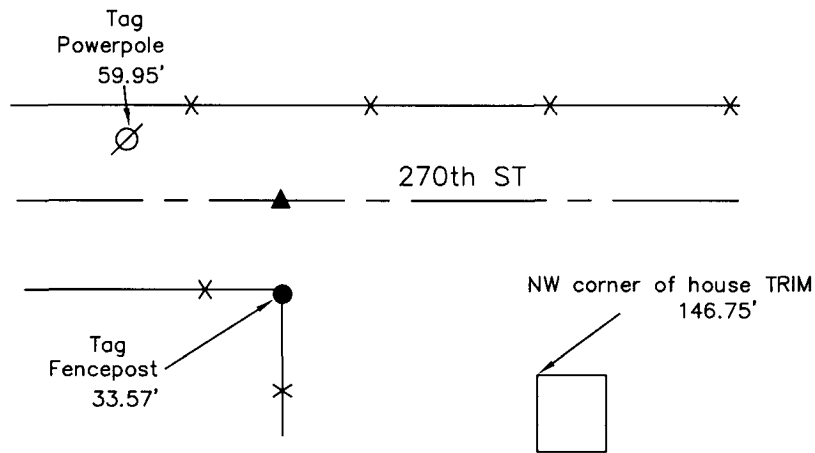
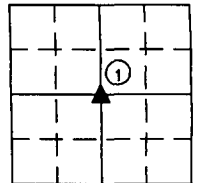
Monument Description and Remarks:

Found 1/2" pin at ① from information in E.B. Hiatt field notes, at County Engineers Office.

PLAN-VIEW

①

CENTER 1/4 COR



NOTE: ALL TIES TO ORANGE PLASTIC SURVEY TAGS UNLESS NOTED

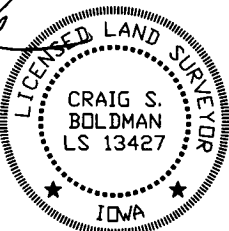
I HEREBY CERTIFY THAT THIS LAND SURVEYING DOCUMENT WAS PREPARED AND THE RELATED SURVEY WORK WAS PERFORMED BY ME OR UNDER MY DIRECT PERSONAL SUPERVISION AND THAT I AM A DULY LICENSED LAND SURVEYOR UNDER THE LAWS OF THE STATE OF IOWA

SIGNATURE Craig S. Boldman
CRAIG S. BOLDMAN

DATE: 5/25/18 LICENSE NO 13427

MY RENEWAL DATE IS DECEMBER 31, 2018

COVERS SHEETS 1



CORNERS TO BE INDEXED

| Corners | Section | Township | Range |
|---------|---------|----------|-------|
| C 1/4 | 33 | 75N | 28W |

Project No. 18022