



Document 2018 994

Book 2018 Page 994 Type 06 043 Pages 1
Date 3/30/2018 Time 1:12:07PM
Rec Amt \$7.00

INDX
ANNO
SCAN
CHEK

LISA SMITH, COUNTY RECORDER
MADISON COUNTY IOWA

PREPARED BY: CRAIG S. BOLDMAN 521 WEST GREEN STREET, WINTERSET, IA 50273 PHONE (515)462-9242

UNITED STATES PUBLIC LAND SURVEY CORNER CERTIFICATE

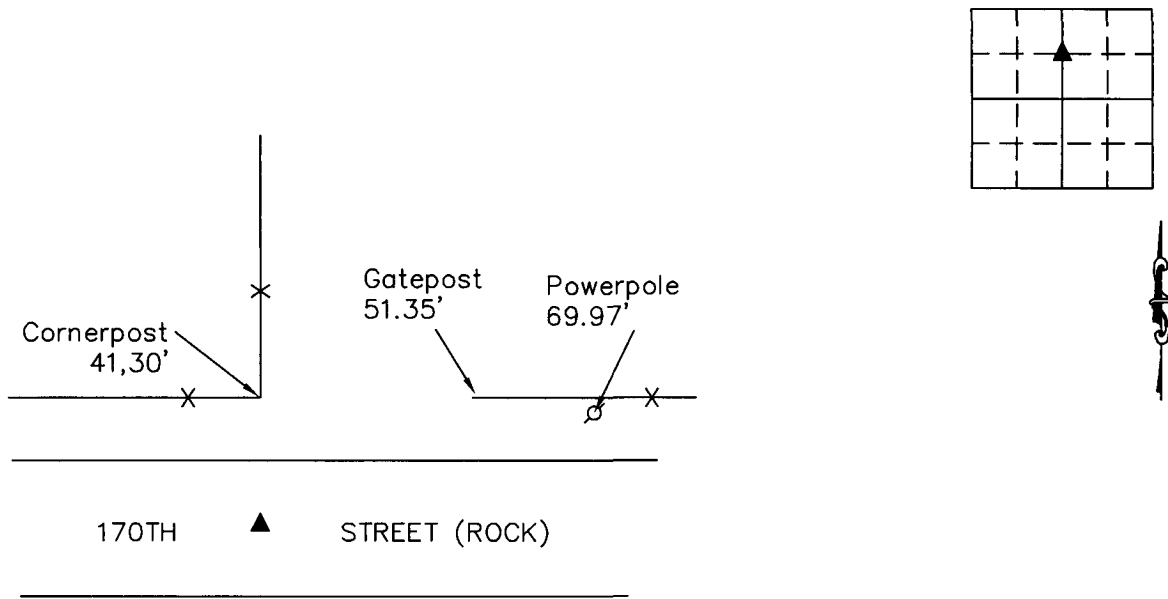
Land Survey Monuments situated in Section 7, Township 76N, Range 28W, the Fifth Principal Meridian, Madison County, Iowa.
Previously recorded in Book 1 Page 319 in County Recorder's Office

(Show reason for preparing this certificate, the evidence and detailed procedures used in establishing the corner positions & monumentation found or placed)

Monument Description and Remarks:

●NW cor SW 1/4 NE 1/4- Retied because original ties are missing. Found 1" round headed bolt 20" deep.

PLAN-VIEW



NOTE: ALL TIES TO ORANGE PLASTIC TAGS UNLESS NOTED

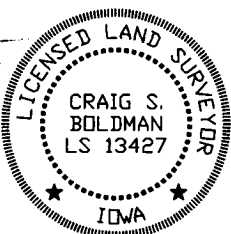
I HEREBY CERTIFY THAT THIS LAND SURVEYING DOCUMENT WAS PREPARED AND THE RELATED SURVEY WORK WAS PERFORMED BY ME OR UNDER MY DIRECT PERSONAL SUPERVISION AND THAT I AM A DULY LICENSED LAND SURVEYOR UNDER THE LAWS OF THE STATE OF IOWA

SIGNATURE Craig S. Boldman
CRAIG S. BOLDMAN

DATE: 3/30/18 LICENSE NO 13427

MY RENEWAL DATE IS DECEMBER 31, 2018

COVERS SHEETS 1



CORNERS TO BE INDEXED

Corners	Section	Township	Range
NW cor SW 1/4 NE 1/4	7	76	28

Project No. 18012