

LISA SMITH, COUNTY RECORDER
MADISON COUNTY IOWA

Prepared By: J. Brian Morrissey, Morrissey Surveying & Consulting, LLC, 1405 Hwy. G28, Otley, Ia. 50214, 515-480-2531

UNITED STATES PUBLIC LAND SURVEY CORNER CERTIFICATE OF

Land Survey Monuments situated in Section 29, Township 74N, Range 27W, of the Fifth Principal Meridian, Madison County, Iowa.
Previously recorded in N/A in the County Recorder's Office.
(book, page, document number, etc.)

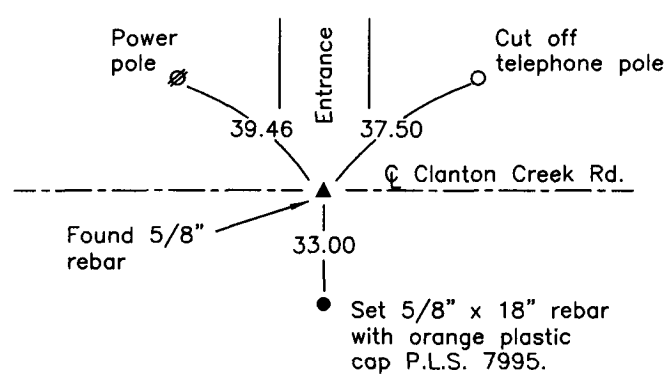
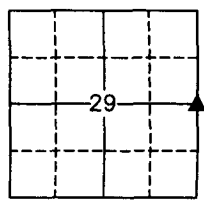
(Show reason for preparing this certificate, the evidence and detailed procedures used in establishing the corner positions and monumentation found or placed.)

Monument Description and Remarks: Found 5/8" rebar. Accepted position. No previous Certificate of record.
This Corner was set under the direct personal supervision of P.L.S. 7995 in 1987 as noted by the Madison County Engineer's Office card tie records.

This Corner was used for a Retracement Plat of Survey in the NE 1/4 of the SE 1/4 of Sec. 29, recorded in Bk. 2017, P. 244.

PLAN VIEW

(Show a minimum of three reference ties to durable physical objects, relevant monuments and physical conditions that will enable recovery of the corner.)



E 1/4 Corner, Section 29

Date of Survey: 12/1/16

NOTE: ALL TIES TO BRASS DISK OR YELLOW/ORANGE SURVEY MARKER UNLESS NOTED.



I hereby certify that this land surveying document was prepared and the related survey work was performed by me or under my direct personal supervision and that I am a duly Licensed Land Surveyor under the laws of the state of Iowa.

Signature: J. Brian Morrissey Date: 1/22/18
J. Brian Morrissey

License number 7995.
My license renewal date is December 31, 2019