



Document 2018 283

Book 2018 Page 283 Type 06 043 Pages 1

Date 1/25/2018 Time 11:07:51AM

Rec Amt \$7.00

INDX

ANNO

SCAN

CHEK

LISA SMITH, COUNTY RECORDER
MADISON COUNTY IOWA

Prepared By: J. Brian Morrissey, Morrissey Surveying & Consulting, LLC, 1405 Hwy. G28, Otley, Ia. 50214, 515-480-2531

UNITED STATES PUBLIC LAND SURVEY CORNER CERTIFICATE OF

Land Survey Monuments situated in Section 29, Township 74N, Range 27W, of the Fifth Principal Meridian, Madison County, Iowa.
Previously recorded in N/A in the County Recorder's Office.

(book, page, document number, etc.)

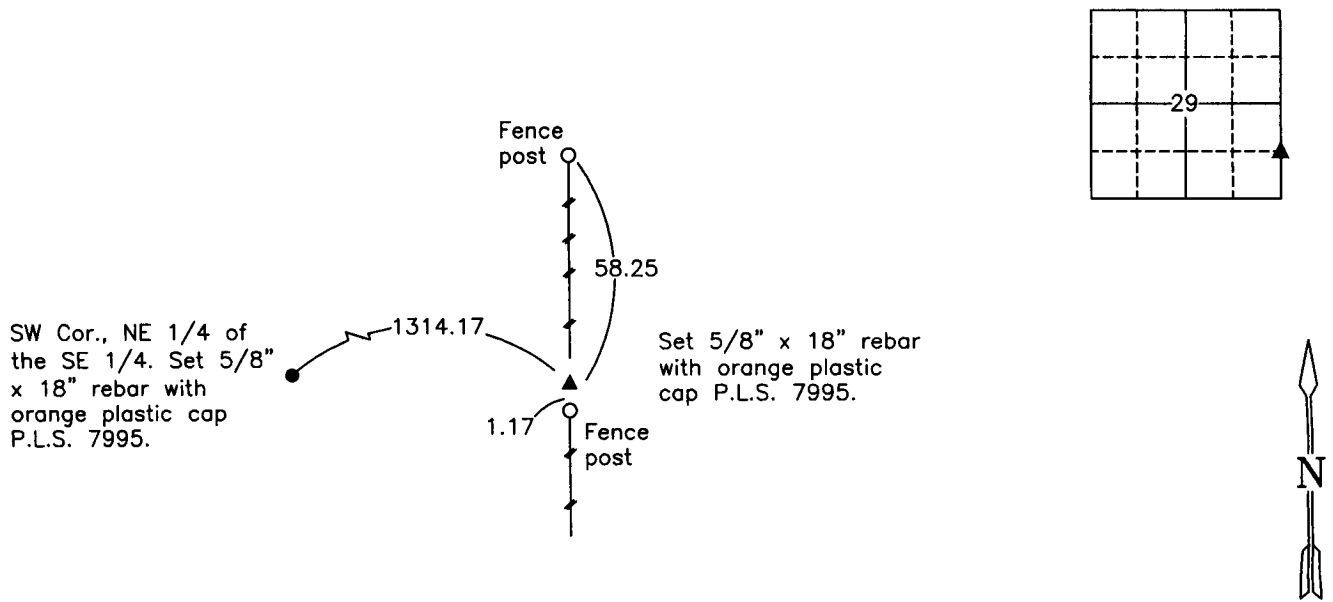
(Show reason for preparing this certificate, the evidence and detailed procedures used in establishing the corner positions and monumentation found or placed.)

Monument Description and Remarks: Set 5/8" x 18" rebar with orange plastic cap P.L.S. 7995 at midpoint and on line between found E 1/4 corner and SE Cor. position. SE Cor. position determined by intersecting a line from SE Cor., SW 1/4 of the SW 1/4 position and fence corner at the SW Cor., SE 1/4 of the SE 1/4. Position of SE Cor., SW 1/4 of the SW 1/4 based on Road Record Bk. 5, P. 35, property to east Warranty Deed, Bk. 2009, P. 699, and 30 feet south of property to east fence (the monument set by Section Corner Certificate Bk. 2004, P. 5475, was not found nor was the position accepted). Said fence corner position used and not the found or accepted monument by Section Corner Certificate, Bk. 2006, P. 5163. Established position of SE Cor. is 8.95 feet south of found and not accepted monument by Section Corner Certificate Bk. 2004, P. 5230.

This Corner was used for a Retracement Plat of Survey in the NE 1/4 of the SE 1/4 of Sec. 29, recorded in Bk. 2017, P. 244.

PLAN VIEW

(Show a minimum of three reference ties to durable physical objects, relevant monuments and physical conditions that will enable recovery of the corner.)



SE Corner, NE 1/4 of the SE 1/4, Section 29

Date of Survey: 12/1/16

NOTE: ALL TIES TO BRASS DISK OR YELLOW/ORANGE SURVEY MARKER UNLESS NOTED.



I hereby certify that this land surveying document was prepared and the related survey work was performed by me or under my direct personal supervision and that I am a duly Licensed Land Surveyor under the laws of the state of Iowa.

Signature: J. Brian Morrissey Date: 1/22/18
J. Brian Morrissey

License number 7995.

My license renewal date is December 31, 2019

893-16-1/3