



Document 2017 4031

Book 2017 Page 4031 Type 06 043 Pages 1
Date 12/22/2017 Time 1:47:14PM
Rec Amt \$7.00

INDX
ANNO
SCAN
CHEK

LISA SMITH, COUNTY RECORDER
MADISON COUNTY IOWA

PREPARED BY: CRAIG S. BOLDMAN 521 WEST GREEN STREET. WINTERSET, IA 50273 PHONE (515)462-9242

UNITED STATES PUBLIC LAND SURVEY CORNER CERTIFICATE

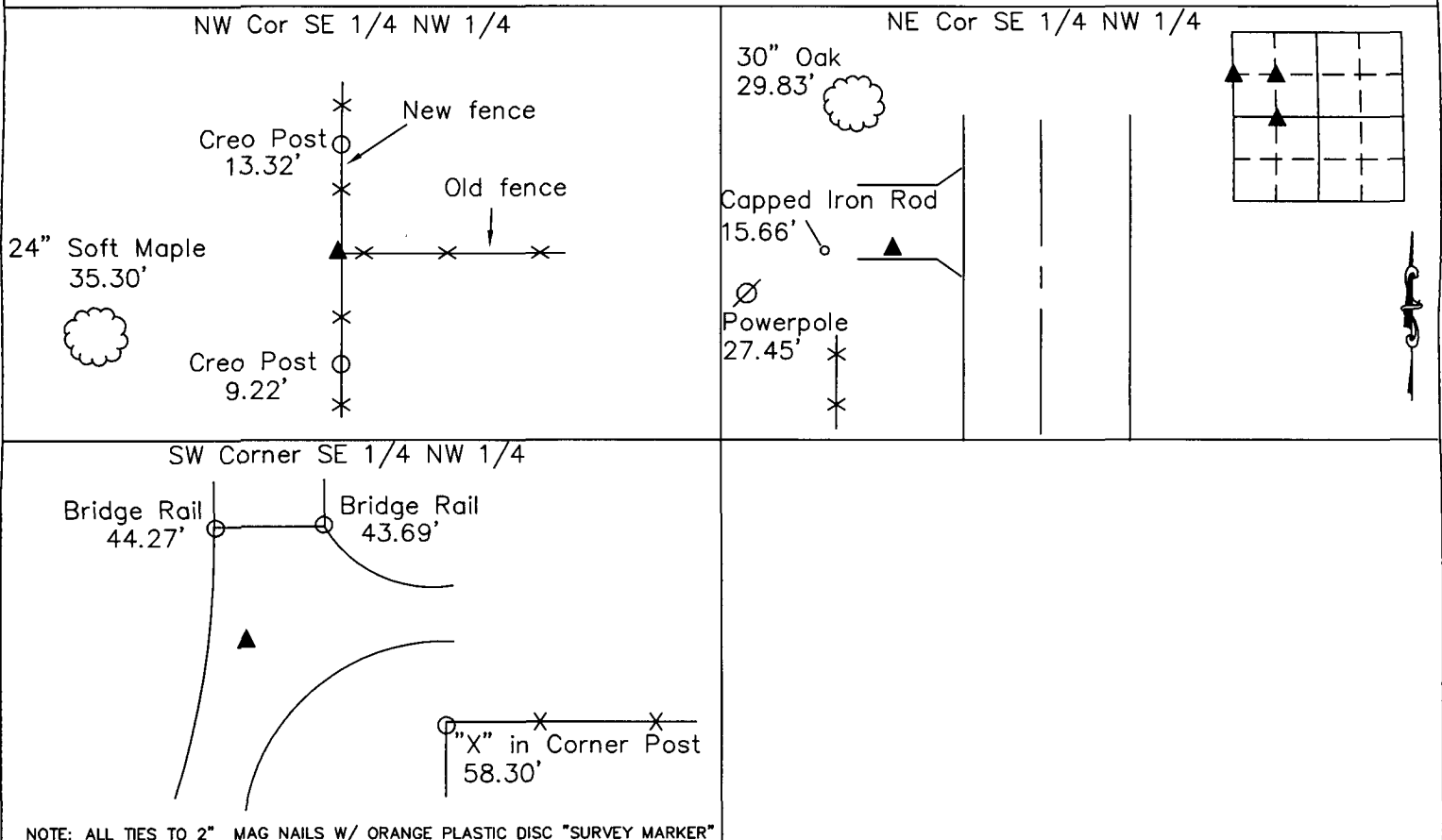
Land Survey Monuments situated in Section 3, Township 75, Range _____, the Fifth Principal Meridian, Madison County, Iowa.
Previously recorded in Book 2004 Page: 4486 in County Recorder's Office

(Show reason for preparing this certificate, the evidence and detailed procedures used in establishing the corner positions & monumentation found or placed)

Monument Description and Remarks:

Conditions have changed or some ties are missing.

PLAN-VIEW



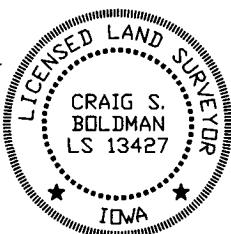
I HEREBY CERTIFY THAT THIS LAND SURVEYING DOCUMENT WAS PREPARED AND THE RELATED SURVEY WORK WAS PERFORMED BY ME OR UNDER MY DIRECT PERSONAL SUPERVISION AND THAT I AM A DULY LICENSED LAND SURVEYOR UNDER THE LAWS OF THE STATE OF IOWA

SIGNATURE Craig S. Boldman
CRAIG S. BOLDMAN

DATE: 12/21/17 LICENSE NO 13427

MY RENEWAL DATE IS DECEMBER 31, 2018

COVERS SHEETS 1



CORNERS TO BE INDEXED

Corners	Section	Township	Range
NW Cor SE 1/4 NW 1/4	3	75	27
NE Cor SE 1/4 NW 1/4	3	75	27
SW Cor SE 1/4 NW 1/4	3	75	27

Project No. 17071