



Document 2017 3961

Book 2017 Page 3961 Type 06 043 Pages 1

Date 12/18/2017 Time 12:41:15PM

Rec Amt \$7.00

INDX
ANNO
SCAN

LISA SMITH, COUNTY RECORDER
MADISON COUNTY IOWA

CHEK

PREPARED BY: CRAIG S. BOLDMAN 521 WEST GREEN STREET, WINTERSET, IA 50273 PHONE (515)462-9242

UNITED STATES PUBLIC LAND SURVEY CORNER CERTIFICATE

Land Survey Monuments situated in Section 26, Township 75N, Range 27W, the Fifth Principal Meridian, Madison County, Iowa.
Previously recorded in Book 2006 Page 1596 in County Recorder's Office

(Show reason for preparing this certificate, the evidence and detailed procedures used in establishing the corner positions & monumentation found or placed)

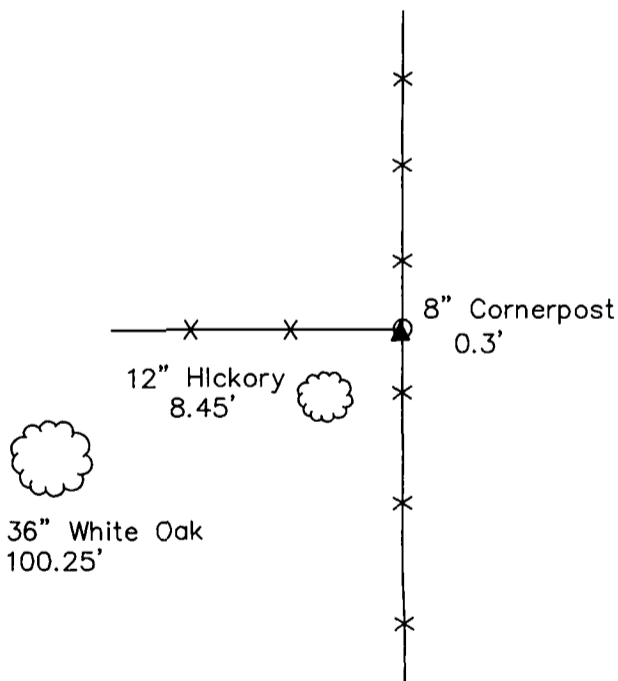
Monument Description and Remarks:

SE Cor W1/2 NE1/4—Found capped iron rod #6808. Not accepted. Road record indicates road centerline South of corner. Location established using information from road plans and previously recorded plats. Set 5/8" IR with orange cap #13427 at corner.

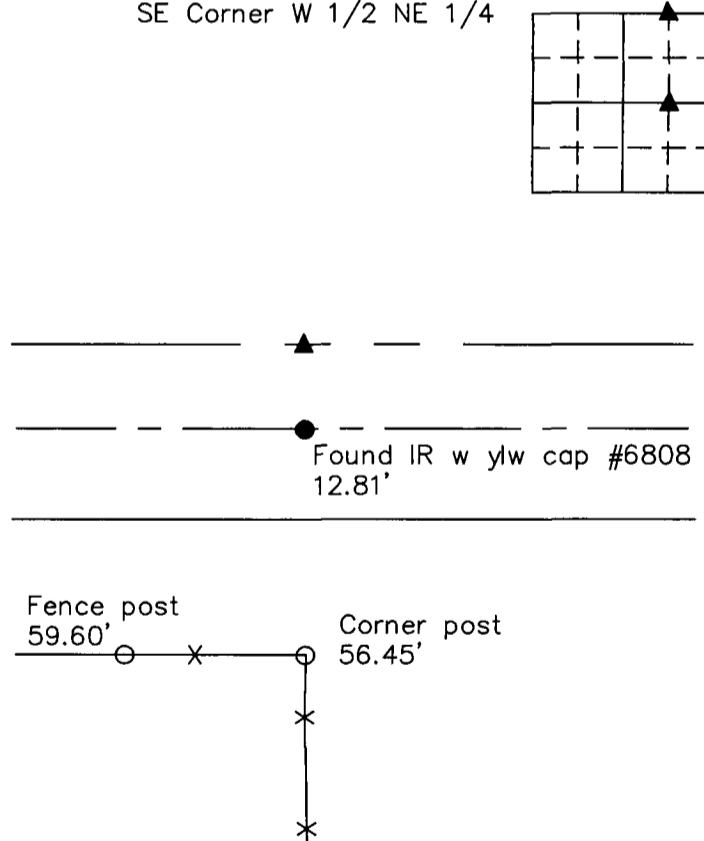
NE Cor W1/2 NE1/4—Found 8" wood corner post with fences running North, South, and West. Landowner makes claim that post is at the agreed upon corner by adjacent landowners. Accepted post and set 5/8" IR with orange cap #13427 on SW side of post.

PLAN-VIEW

NE Corner W 1/2 NE 1/4



SE Corner W 1/2 NE 1/4



NOTE: ALL TIES TO 2" MAG NAIL W ORANGE PLASTIC SURVEY DISC UNLESS NOTED OTHERWISE

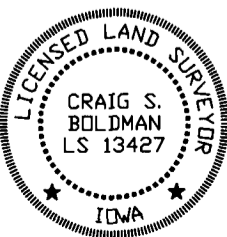
I HEREBY CERTIFY THAT THIS LAND SURVEYING DOCUMENT WAS PREPARED AND THE RELATED SURVEY WORK WAS PERFORMED BY ME OR UNDER MY DIRECT PERSONAL SUPERVISION AND THAT I AM A DULY LICENSED LAND SURVEYOR UNDER THE LAWS OF THE STATE OF IOWA

SIGNATURE *Craig S. Boldman*
CRAIG S. BOLDMAN

DATE: 12/18/17 LICENSE NO 13427

MY RENEWAL DATE IS DECEMBER 31, 2018

COVERS SHEETS 1



CORNERS TO BE INDEXED

Corners	Section	Township	Range
NE Corner - W 1/2 NE 1/4	26	75	27
SE Corner - W 1/2 NE 1/4			

Project No. 17072