



Document 2017 3661

Book 2017 Page 3661 Type 06 043 Pages 1

Date 11/21/2017 Time 10:08:03AM

Rec Amt \$.00

INDX  
ANNO  
SCAN

LISA SMITH, COUNTY RECORDER  
MADISON COUNTY IOWA

CHEK

Prepared By: Michael James Hackett, Madison County Engineer's Office, 1105 E. Court Ave., Winterset, Ia. 50273, Tel. (515) 462-1136  
Return To: Michael James Hackett, Madison County Engineer's Office, 1105 E. Court Ave., Winterset, Ia. 50273, Tel. (515) 462-1136

## UNITED STATES PUBLIC LAND SURVEY CORNER CERTIFICATE OF

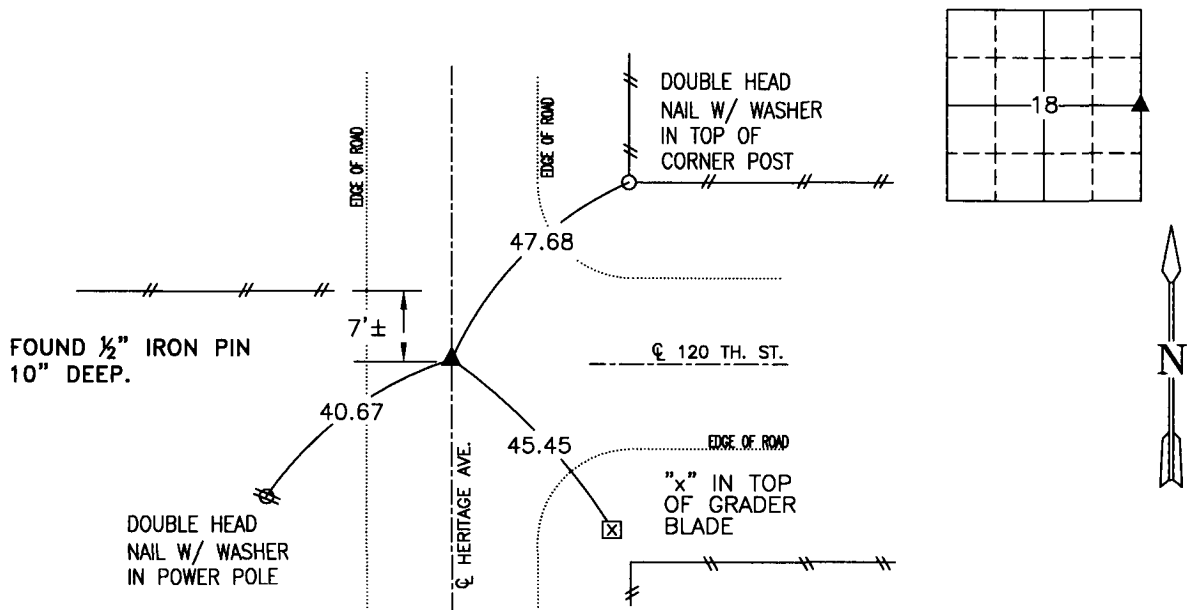
Land Survey Monuments situated in Section 18, Township 77 N, Range 28 W, of the Fifth Principal Meridian, Madison County, Iowa.  
Previously recorded in Book 1, Page 660 & Book 2017, Page 3352 in County Recorder's Office.  
(book, page, document number, etc.)

(Show reason for preparing this certificate, the evidence and detailed procedures used in establishing the corner positions and monumentation found or placed.)

Monument Description and Remarks: Found 1/2" iron pin 10" deep in county highway. Confirmed the position of the corner from Madison County bridge replacement project control (BROS-C061(105)--5J-61) and previously recorded ties. Accepted position. This certificate was prepared as part of the Madison County bridge replacement project number (BROS-C061(105)--5J-61).

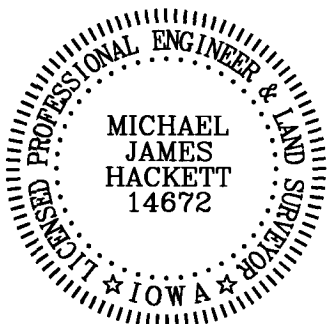
### PLAN VIEW

(Show a minimum of three reference ties to durable physical objects, relevant monuments and physical conditions that will enable recovery of the corner.)



NE. COR., NE. 1/4, SE 1/4 SEC. 18

NOTE: ALL TIES TO "X" NAILS UNLESS NOTED



I hereby certify that this land surveying document was prepared and the related survey work was performed by me or under my direct personal supervision and that I am a duly Licensed Land Surveyor under the laws of the State of Iowa.

Signed Michael James Hackett Date 11-7-2017  
Michael James Hackett

Iowa license number 14672.  
My license renewal date is 12/31/2018.  
Pages covered by this seal: 1.

BROS-C061(105)--5J-61  
L-5