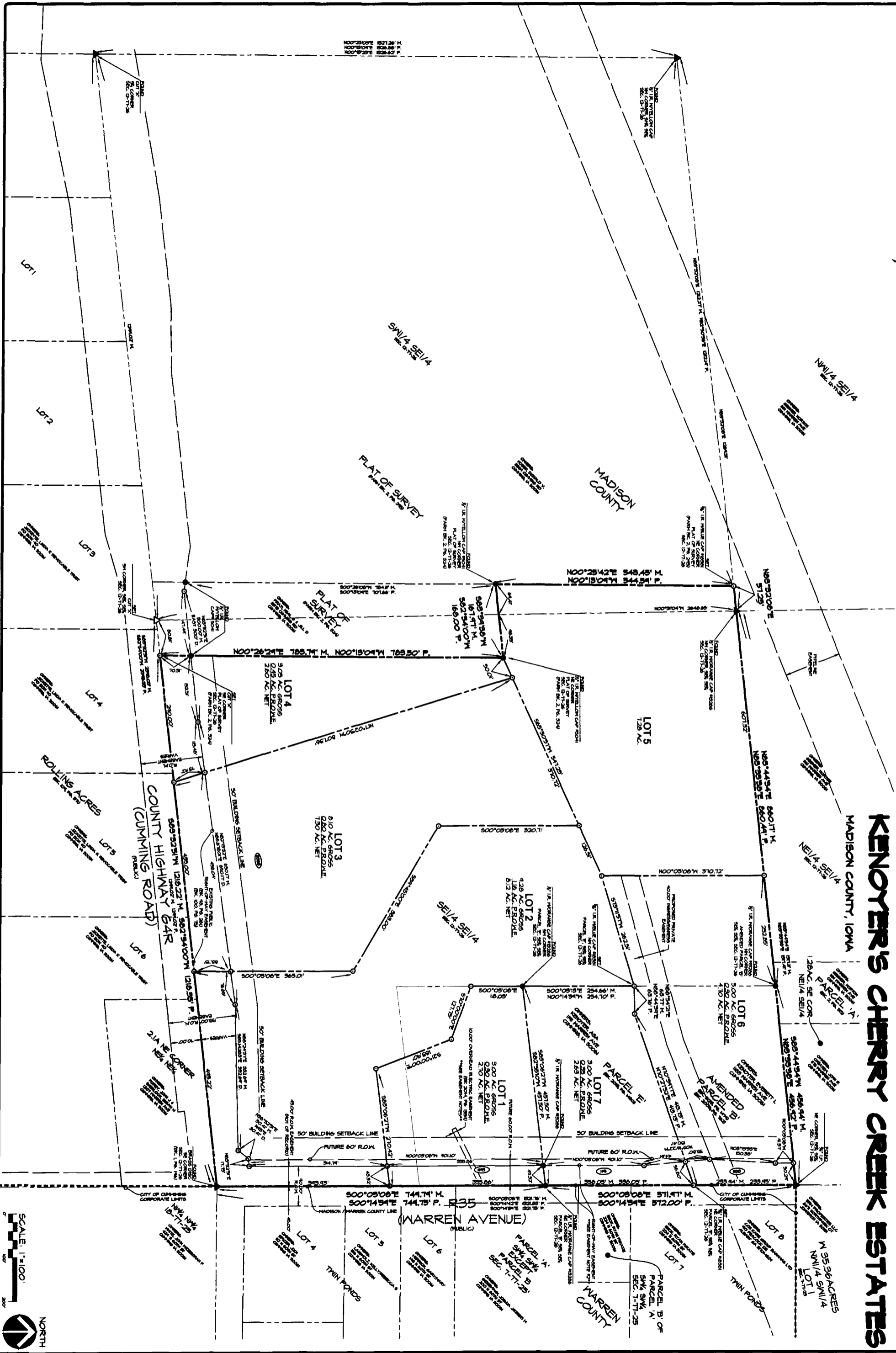


AMENDED FINAL PLAT

KENOYER'S CHERRY CREEK ESTATES

MADISON COUNTY, IOWA



SCALE: 1"=100'

NORTH

KENOYER'S CHERRY CREEK ESTATES
 MADISON COUNTY, IOWA

AMENDED FINAL PLAT

DATE	REVISIONS	COMMENTS
Nov. 6, 2017	1	3rd SUBMITTAL
	2	2nd SUBMITTAL
	3	1st SUBMITTAL FP, FEB. 21, 2017
	4	DATE OF SURVEY: MAY 29, 2015
	5	DESIGNED BY: ARP
	6	DRAWN BY: JAG

CEC Civil Engineering Consultants, Inc.

2400 86th Street . Unit 12 . Des Moines, Iowa 50322
 515.276.4884 . Fax: 515.276.7084 . mail@ceclac.com