

Recorder's Index	
County:	MADISON
Section	17, T77N, R28W, 5TH P.M.
City:	NA
Subdivision:	NA
Block:	NA
Lot(s):	N/A
Proprietor:	MARTIN MARIETTA
Requested By:	MARTIN MARIETTA



**BK: 2017 PG: 3352**  
**Recorded: 10/24/2017 at 3:47:44.0 PM**  
**Fee Amount: \$7.00**  
**Revenue Tax:**  
**LISA SMITH RECORDER**  
**Madison County, Iowa**

Lamp, Rynearson & Associates, Inc. 14710 W. Dodge Rd.,  
 Prepared by: Associates, Inc. Address: Ste 100 Omaha, NE 68154 Phone: (402) 496-2498

**UNITED STATES PUBLIC LAND SURVEY CORNER CERTIFICATE FOR**

Land Survey monuments situated in Section 17, Township 77 NORTH,  
 Range 28 WEST, of the Fifth Principal Meridian, MADISON County, Iowa.  
 Previously recorded in BK. 2017, PG. 2084 AND BK. 2001, PG. 4325 in County Recorder's Office.

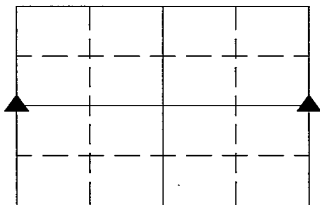
(Show reason for preparing this certificate, the evidence and detailed procedures used in establishing the corner positions & monumentation found or placed.)

**MONUMENT DESCRIPTION AND REMARK**

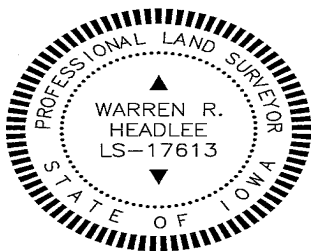
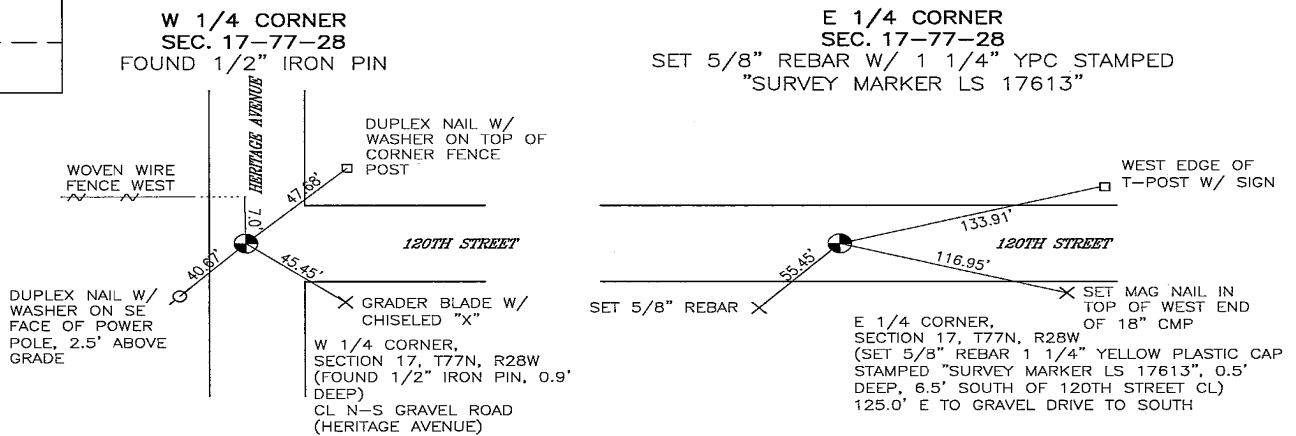
W 1/4 CORNER, SECTION 17, T77N, R28W, FOUND 1/2" IRON PIN  
 E 1/4 CORNER, SECTION 17, T77N, R28W, SET 5/8" REBAR W/ 1 1/4" YPC STAMPED "SURVEY MARKER 17613"  
 E 1/4 CORNER & ALL ACCESSORIES DESTROYED DUE TO 120TH STREET BEING REMOVED AS PART OF THE LOCAL MINING ACTIVITIES. E 1/4 CORNER RE-ESTABLISHED PER PARCEL CORNERS ESTABLISHED AS PART OF THE BARKER LEMAR PROPERTY SURVEY OF LOT A-2 PERFORMED BY JOHN R. SOMMERS, PLS NO. 8996 ON AUGUST 6, 2001.

**PLAN-VIEW**

(Show a minimum of three reference ties to durable physical objects, relevant monuments and physical conditions that will enable recovery of the corner.)



Not to Scale



I hereby certify that this land surveying document was prepared and the related survey work was performed by me or under my direct personal supervision and that I am a duly licensed Land Surveyor under the laws of the State of Iowa.

Warren R. Headlee 9-26-17  
 Signature Date

Printed or typed name: WARREN R. HEADLEE

License number: LS-17613

My license renewal date is: DECEMBER 31, 2018

Sheets covered by this seal: 1

Corners to be Indexed

W 1/4 CORNER  
 SEC 17-77-28  
 E 1/4 CORNER  
 SEC 17-77-28