



Document 2017 3241

Book 2017 Page 3241 Type 06 043 Pages 1
Date 10/16/2017 Time 10:54:21AM
Rec Amt \$7.00

INDX
ANNO
SCAN
CHEK

LISA SMITH, COUNTY RECORDER
MADISON COUNTY IOWA

RETURN TO: CIVIL DESIGN ADVANTAGE, 3405 S.E. CROSSROADS DRIVE, SUITE G, GRIMES, IOWA 50111 PH: 515-369-4400 FAX: 515-369-4410

UNITED STATES PUBLIC LAND SURVEY CORNER CERTIFICATE OF

Land Survey Monuments situated in Section 13, Township 76, Range 28, of the
Fifth Principal Meridian, MADISON County, Iowa.

Previously recorded in BOOK 2, PAGE 21 in County Recorder's Office.
(book, page, document number, etc.)

(Show reason for preparing this certificate, the evidence and detailed procedures
used in establishing the corner positions and monumentation found or placed.)

Monument Description and Remarks:

REASON FOR FILING CORNER CERTIFICATE (CHECK ALL THAT APPLY)

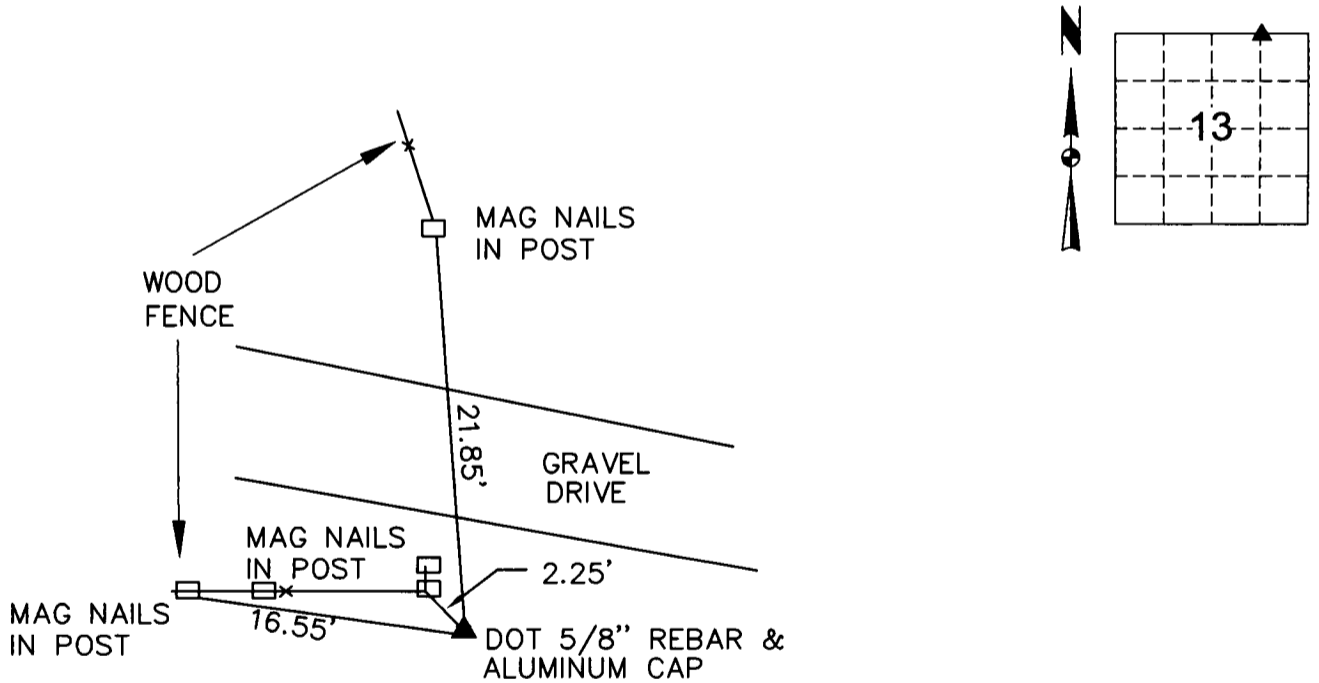
- THERE IS NO CERTIFICATE FOR THE CORNER ON FILE WITH THE RECORDER OF THE COUNTY IN WHICH THE CORNER IS LOCATED.
- THE SURVEYOR IN RESPONSIBLE CHARGE OF THE LAND SURVEYING ACCEPTS A CORNER POSITION WHICH DIFFERS FROM THAT SHOWN IN THE PUBLIC RECORDS OF THE COUNTY IN WHICH THE CORNER IS LOCATED.
- THE CORNER MONUMENT IS REPLACED OR MODIFIED IN ANY WAY.
- THE REFERENCE TIES IN AN EXISTING PUBLIC RECORD ARE INCORRECT OR MISSING.

NW CORNER NE1/4, NE1/4 SECTION 13-76-28: FOUND 5/8" REBAR WITH ALUMINUM CAP. LOCATION AND MONUMENT TYPE CONSISTENT WITH WHAT IS SHOWN ON COVERED BRIDGE ESTATES FINAL PLAT, IDOT CONDEMNATION DOCUMENTS AND OTHER SURVEYS.

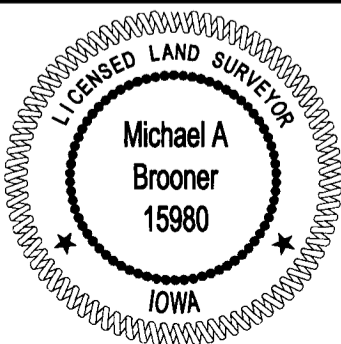
ACCEPTED MONUMENT FOR PLAT OF SURVEY.

PLAN VIEW

(Show a minimum of three reference ties to durable physical objects, relevant monuments and physical conditions that will enable recovery of the corner.)



NW CORNER
NE $\frac{1}{4}$, NE $\frac{1}{4}$
13-76-28



I HEREBY CERTIFY THAT THIS LAND SURVEYING DOCUMENT WAS PREPARED AND THE RELATED SURVEY WORK WAS PERFORMED BY ME OR UNDER MY DIRECT PERSONAL SUPERVISION AND THAT I AM A DULY LICENSED LAND SURVEYOR UNDER THE LAWS OF THE STATE OF IOWA.

Michael Brooner 10-10-2017
MICHAEL A BROONER PLS DATE

LICENSE NUMBER 15980
MY LICENSE RENEWAL DATE IS DECEMBER 31, 2018
CERTIFICATION COVERS THIS SHEET ONLY

List Corners to be Indexed

Corners	Section	Twp	Range
NW COR NE1/4 NE1/4	13	76	28
NE COR NW1/4 NE1/4	13	76	28
SW COR SE1/4 SE1/4	12	76	28
SE COR SW1/4 SE1/4	12	76	28

Tech: WRH PN: _

Date: 10/9/17