



Document 2017 2457

Book 2017 Page 2457 Type 06 043 Pages 1  
Date 8/09/2017 Time 11:07:16AM  
Rec Amt \$7.00

INDX  
ANNO  
SCAN  
CHEK

LISA SMITH, COUNTY RECORDER  
MADISON COUNTY IOWA

Prepared By: J. Brian Morrissey, Morrissey Surveying & Consulting, LLC, 1405 Hwy. G28, Otley, Ia. 50214, 515-480-2531

## UNITED STATES PUBLIC LAND SURVEY CORNER CERTIFICATE OF

Land Survey Monuments situated in Section 21, Township 76N, Range 27W, of the Fifth Principal Meridian, Madison County, Iowa.  
Previously recorded in Bk. 1, P. 341 in the County Recorder's Office.  
(book, page, document number, etc.)

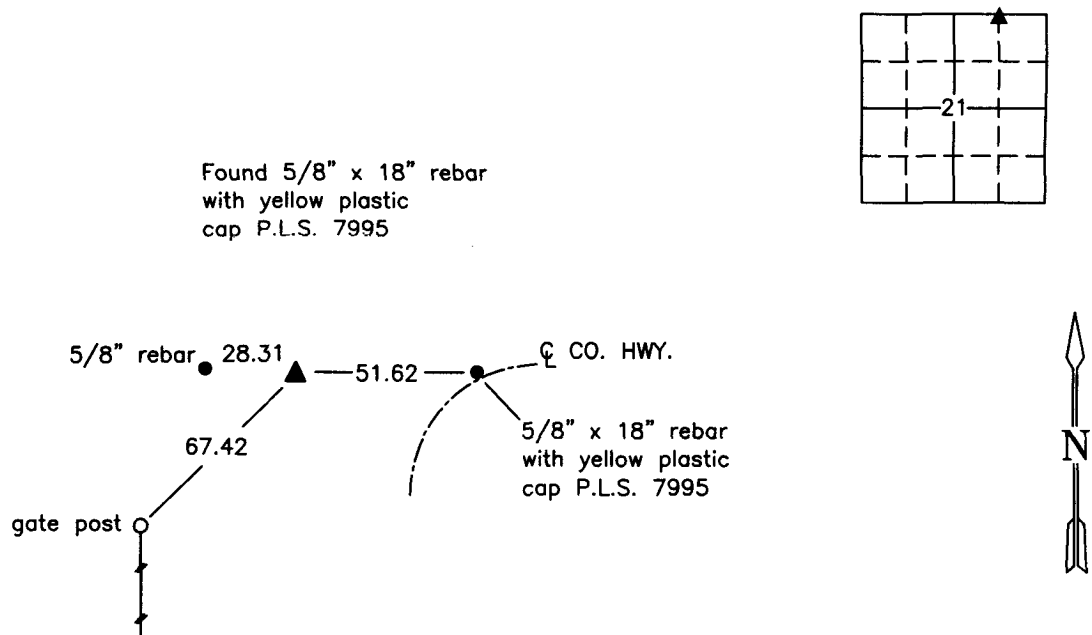
(Show reason for preparing this certificate, the evidence and detailed procedures used in establishing the corner positions and monumentation found or placed.)

Monument Description and Remarks: Found 5/8" x 18" rebar with yellow plastic cap P.L.S. 7995.  
Accepted position. Previous ties altered or obliterated by new fence construction.

This Corner was used for a Plat of Survey in the NE 1/4 and NW 1/4 of Sec. 21, recorded in Bk. 2016, P. 2108.

### PLAN VIEW

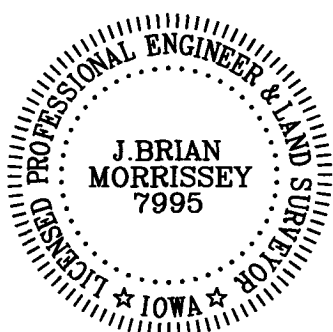
(Show a minimum of three reference ties to durable physical objects, relevant monuments and physical conditions that will enable recovery of the corner.)



NE Corner, NW 1/4, NE 1/4, Section 21

Date of Survey: 6/24/16

NOTE: ALL TIES TO BRASS DISK OR YELLOW/ORANGE SURVEY MARKER UNLESS NOTED.



I hereby certify that this land surveying document was prepared and the related survey work was performed by me or under my direct personal supervision and that I am a duly Licensed Land Surveyor under the laws of the state of Iowa.

Signature: J. Brian Morrissey Date: 8/7/17  
J. Brian Morrissey

License number 7995.

My license renewal date is December 31, 2017

856-16-1/1