



Document 2017 2403

Book 2017 Page 2403 Type 06 043 Pages 1
Date 8/03/2017 Time 3:27:02PM
Rec Amt \$7.00

LISA SMITH, COUNTY RECORDER
MADISON COUNTY IOWA

INDX
ANNO
SCAN
CHEK

Prepared by: Vincent E. Piagentini, Abaci Consulting Inc, 101 NE Circle Dr, Grimes IA, 50111; (515)986-5048

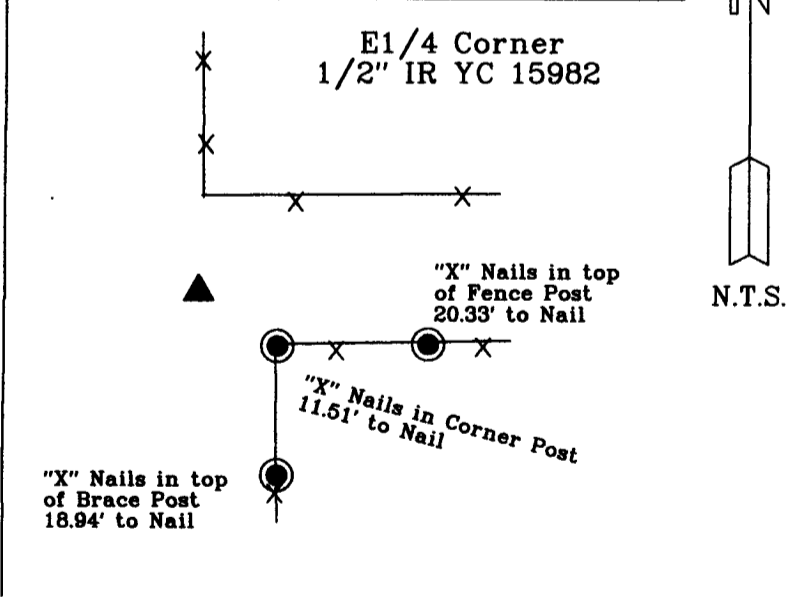
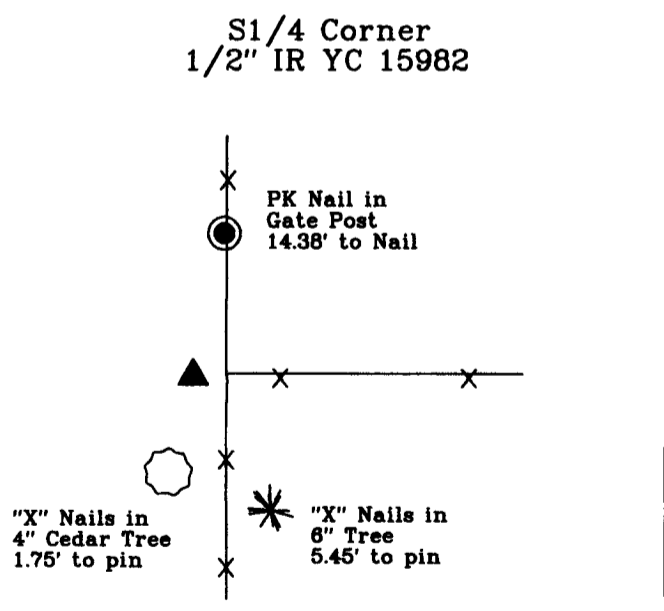
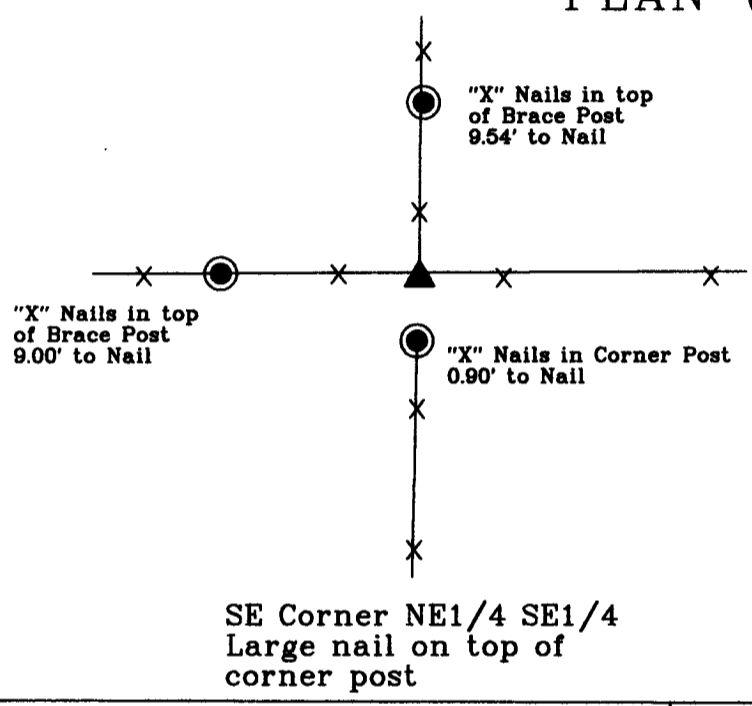
UNITED STATES PUBLIC LAND SURVEY CORNER CERTIFICATE

of
LAND SURVEY MONUMENTS SITUATED IN SECTION 22, TOWNSHIP 75 N, RANGE
29 W, of the Fifth Principal Meridian, Madison County, Iowa.

Monument Description & Remarks:

SE Corner NE1/4 SE1/4, found large nail on top of corner post, accepted position.
S1/4 Corner, Set 1/2" IR YC 15982 at W side of three-way fence running North, East and South.
E1/4 Corner, Set 1/2" IR YC 15982 split fences and set south of fence running North.

PLAN VIEW



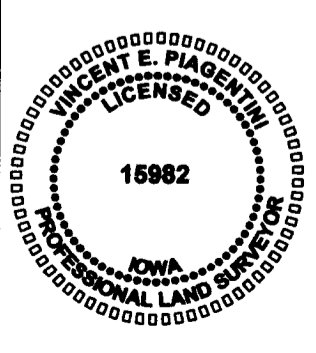
17114

I HEREBY CERTIFY THAT THIS SURVEYING DOCUMENT WAS PREPARED AND THE RELATED WORK WAS PERFORMED BY ME OR UNDER MY DIRECT PERSONAL SUPERVISION, AND THAT I AM A DULY LICENSED PROFESSIONAL LAND SURVEYOR UNDER THE LAWS OF THE STATE OF IOWA.

Vincent E. Piagentini 8/1/17
VINCENT E. PIAGENTINI, IOWA LIC. NO 15982 DATE

MY LICENSE RENEWAL DATE IS DECEMBER 31, 2018.

ADDITIONAL PAGES CERTIFIED (NONE UNLESS INDICATED HERE) This sheet only.



Corners to be Indexed:

Corner	Section	Twp	Range
E1/4 Cor	22	T75N	R29W
S1/4 Cor	22	T75N	R29W
SE Cor NE1/4 SE1/4	22	T75N	R29W
W1/4 Cor	23	T75N	R29W
N1/4 Cor	27	T75N	R29W
SW Cor NW1/4 SW1/4	23	T75N	R29W