

Prepared by: Vincent E. Piagentini, Abaci Consulting Inc, 101 NE Circle Dr, Grimes IA, 50111; (515)986-5048

UNITED STATES PUBLIC LAND SURVEY CORNER CERTIFICATE

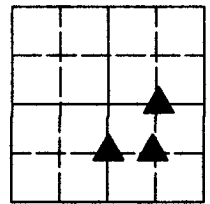
of

LAND SURVEY MONUMENTS SITUATED IN SECTION 22, TOWNSHIP 75 N, RANGE 29 W, of the Fifth Principal Meridian, Madison County, Iowa.

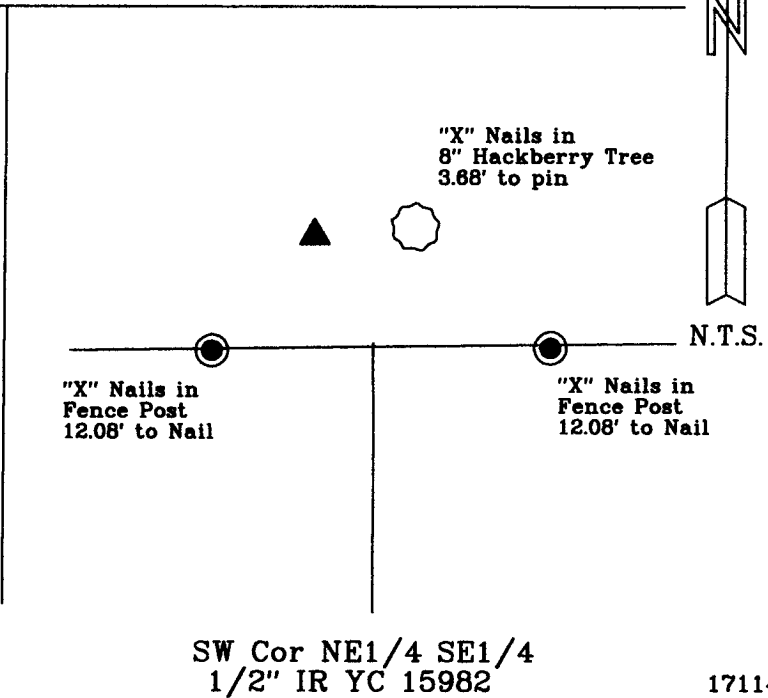
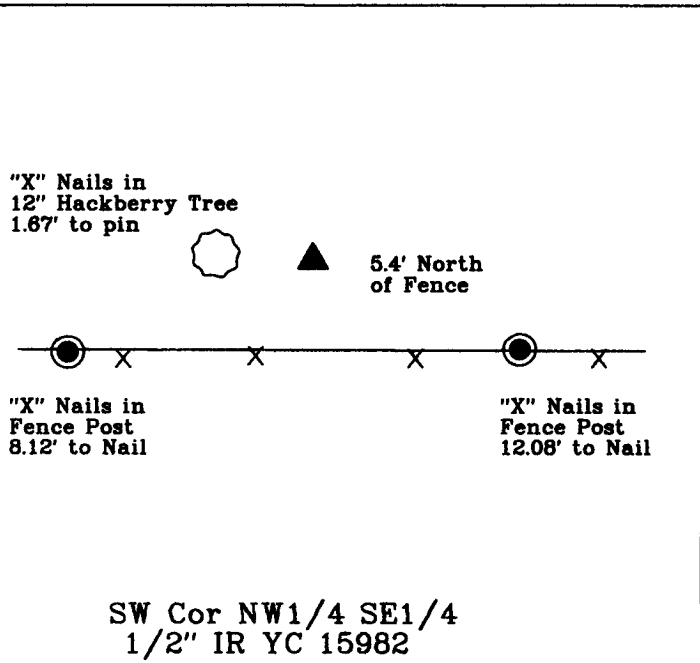
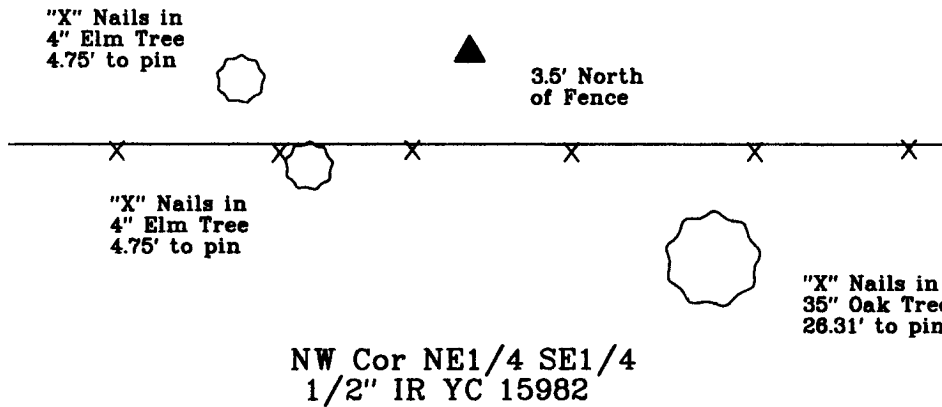
Monument Description & Remarks:

- NW Corner NE1/4 SE1/4, Set 1/2" IR YC 15982, set online at even distance between center of section and the E1/4 corner.
- SW Corner NW1/4 SE1/4, Set 1/2" IR YC 15982, set online at even distance between center of section and the S1/4 corner
- SW Corner NE1/4 SE1/4, Set 1/2" IR YC 15982, setonline at even distance between SE Cor NE1/4 SE1/4 and SW Cor NW1/4 SE1/4

PLAN VIEW



22-75-29



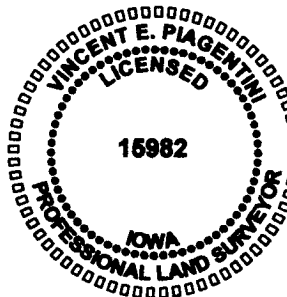
17114

I HEREBY CERTIFY THAT THIS SURVEYING DOCUMENT WAS PREPARED AND THE RELATED WORK WAS PERFORMED BY ME OR UNDER MY DIRECT PERSONAL SUPERVISION, AND THAT I AM A DULY LICENSED PROFESSIONAL LAND SURVEYOR UNDER THE LAWS OF THE STATE OF IOWA.

Vincent E. Piagentini 8/1/17
VINCENT E. PIAGENTINI, IOWA LIC. NO 15982 DATE

MY LICENSE RENEWAL DATE IS DECEMBER 31, 2018.

ADDITIONAL PAGES CERTIFIED (NONE UNLESS INDICATED HERE) This sheet only.



Corners to be Indexed:

Corner	Section	Twp	Range
NW Corner	22	T75N	R29W
NE1/4 Se1/4			
SW Corner	22	T75N	R29W
NE1/4 SE1/4			
SW Corner	22	T75N	R29W
NW1/4 SE1/4			