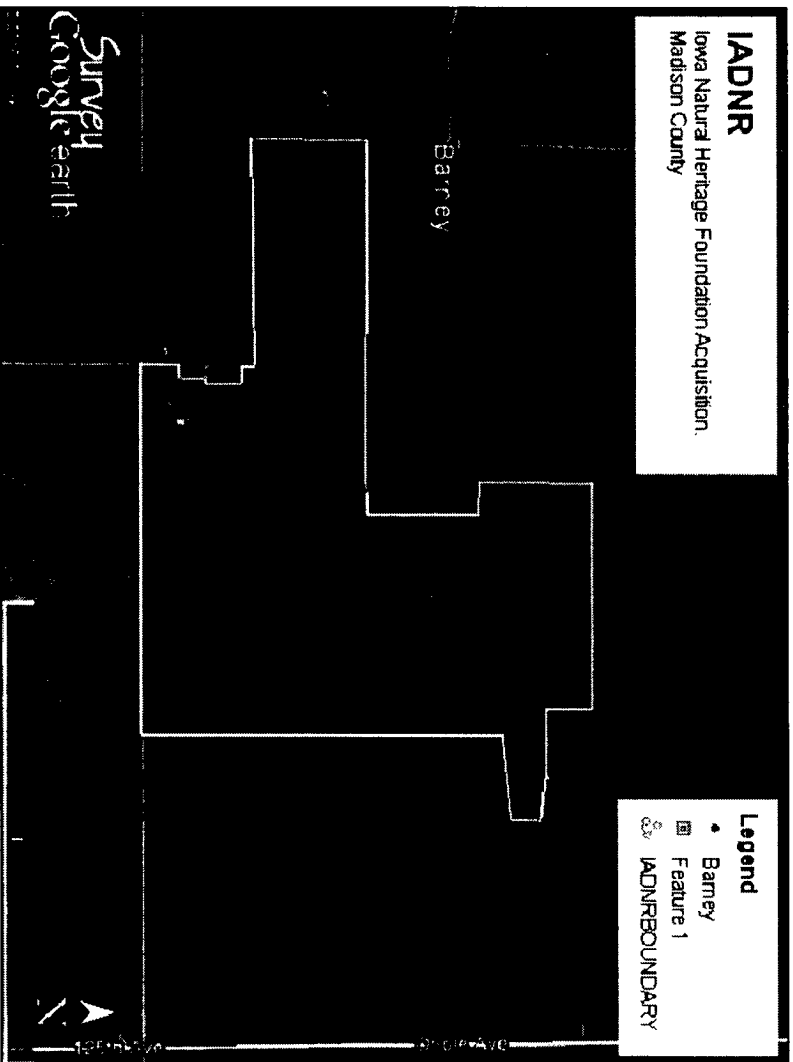


**IADNR**  
Iowa Natural Heritage Foundation Acquisition.  
Madison County



**MISCELLANEOUS NOTES**

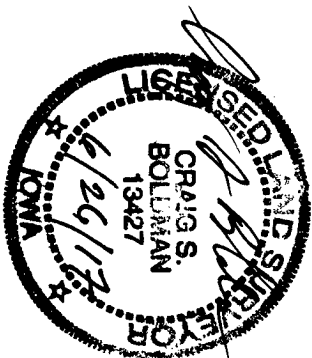
1. Access to subject property from the South is by county road entering from Clarke County. This road is an unrecorded road according to Madison County road records.
2. Access to subject property from the North is by unimproved road. According to Madison County road records this road was recorded and abandoned.

**LEGEND OF SYMBOLS & ABBREVIATIONS**

- X — X — FENCE
- SET CAPPED IRON ROD (CIR) #13427
- IRON PIN FOUND C.I.R.#13427
- ▲ SET LAND CORNER
- ▲ FOUND LAND CORNER
- FOUND C.I.R. #6908

**INDEX LEGEND**

Location:	32-74-27 West the 5th P.M.
Requestor:	Iowa Dept. of Natural Resources
Proprietor:	Iowa Natural Heritage Foundation
Project:	7012 Date of Survey: March 2017
Surveyor Co.:	Boldman Surveying Consultants
Prepared by/return to:	Craig S. Boldman
	521 West Green St. Winterset, IA 50273
Ph: 515-462-9242	



Document 2017 1981  
Book 2017 Page 1981 Type 06 026 Pages 2  
Date 6/26/2017 Time 2:49:18PM  
Rec Amt \$12.00

LISA SMITH, COUNTY RECORDER  
MADISON COUNTY IOWA

INDEX  
ANNOT  
SCAN  
CHECK

DATE	REVISION	DATE	DESCRIPTION
4/28/17	FIRST DRAFT		COMMENTS
6/15/17	COMMENTS		COMMENTS
FILED	DATE	FILED BY	FILED BY

**LICENSED LAND SURVEYOR**  
CRAIG S. BOLDMAN  
13427  
IOWA

Professional Seal of Craig S. Boldman, License No. 13427, State of Iowa. The seal is circular with the text 'LICENSED LAND SURVEYOR' around the perimeter and 'CRAIG S. BOLDMAN 13427 IOWA' in the center. There is a handwritten signature over the seal.

**CORRECTED PLAT OF SURVEY**

**Tract 1**  
Part of the Northeast Quarter (NE1/4), part of the Northwest Quarter (NW1/4), and the North 1/2 acre of the West 1/2 acre of the Southeast Quarter (SE1/4), of Section 32, Township 74 North, Range 27 West of the 5th P.M., Madison County, Iowa.

As surveyed description:  
Beginning of the Northwest corner of the Northeast Quarter of the Northwest Quarter (NE1/4 NW1/4) of Section 32, Township 74 North, Range 27 West of the 5th P.M.: thence N 89°53'22" E a distance of 2625.62'; thence S 00°24'15" W a distance of 561.00'; thence N 86°29'54" E a distance of 655.28'; thence S 83°53'26" E a distance of 662.37'; thence S 00°17'44" W a distance of 315.84'; thence S 81°45'01" W a distance of 1004.67'; thence S 00°32'02" W a distance of 1614.16'; thence N 89°52'28" W a distance of 1639.81'; thence N 00°37'44" E a distance of 268.57'; thence N 131°53'20" W a distance of 1131.59'; thence N 41°34'31" E a distance of 1313.78' to the point of beginning. Containing 172.557 acres including 1/4th acre of county road right of way easement.

**Tract 2**  
The Southwest Quarter (SW1/4), being East of the West line of an existing driveway and fence line and the West 1/2 acre of the Southeast Quarter (SE1/4), EXCEPT 1 acre off the North side thereof in Section 32, Township 74 North, Range 27 West of the 5th P.M., Madison County, Iowa.

As surveyed description:  
Beginning of the Southwest corner of Section 32, Township 74 North, Range 27 West of the 5th P.M.: thence N 00°39'52" E a distance of 42.73'; thence S 89°20'08" E a distance of 32.95'; thence N 89°00'09" E a distance of 159.11'; thence N 45°18'32" E a distance of 124.02'; thence N 25°37'03" E a distance of 269.57'; thence N 82°31'18" E a distance of 153.47'; thence N 36°39'08" E a distance of 201.95'; thence N 02°07'02" E a distance of 1010.66'; thence N 65°42'14" E a distance of 187.24'; thence N 100°7'43" E a distance of 220.39'; thence N 12°56'43" W a distance of 88.94'; thence S 68°24'08" E a distance of 148.14'; thence N 47°29'02" E a distance of 871.71'; thence N 03°16'40" E a distance of 62.24'; thence S 89°52'28" E a distance of 126.57'; thence S 89°52'28" E a distance of 126.57'; thence S 89°52'28" E a distance of 126.57'; thence S 89°52'28" E a distance of 126.57'; thence S 00°32'02" W a distance of 2605.68'; thence N 89°44'12" W a distance of 4272.87' to the point of beginning. Containing 210.460 acres.

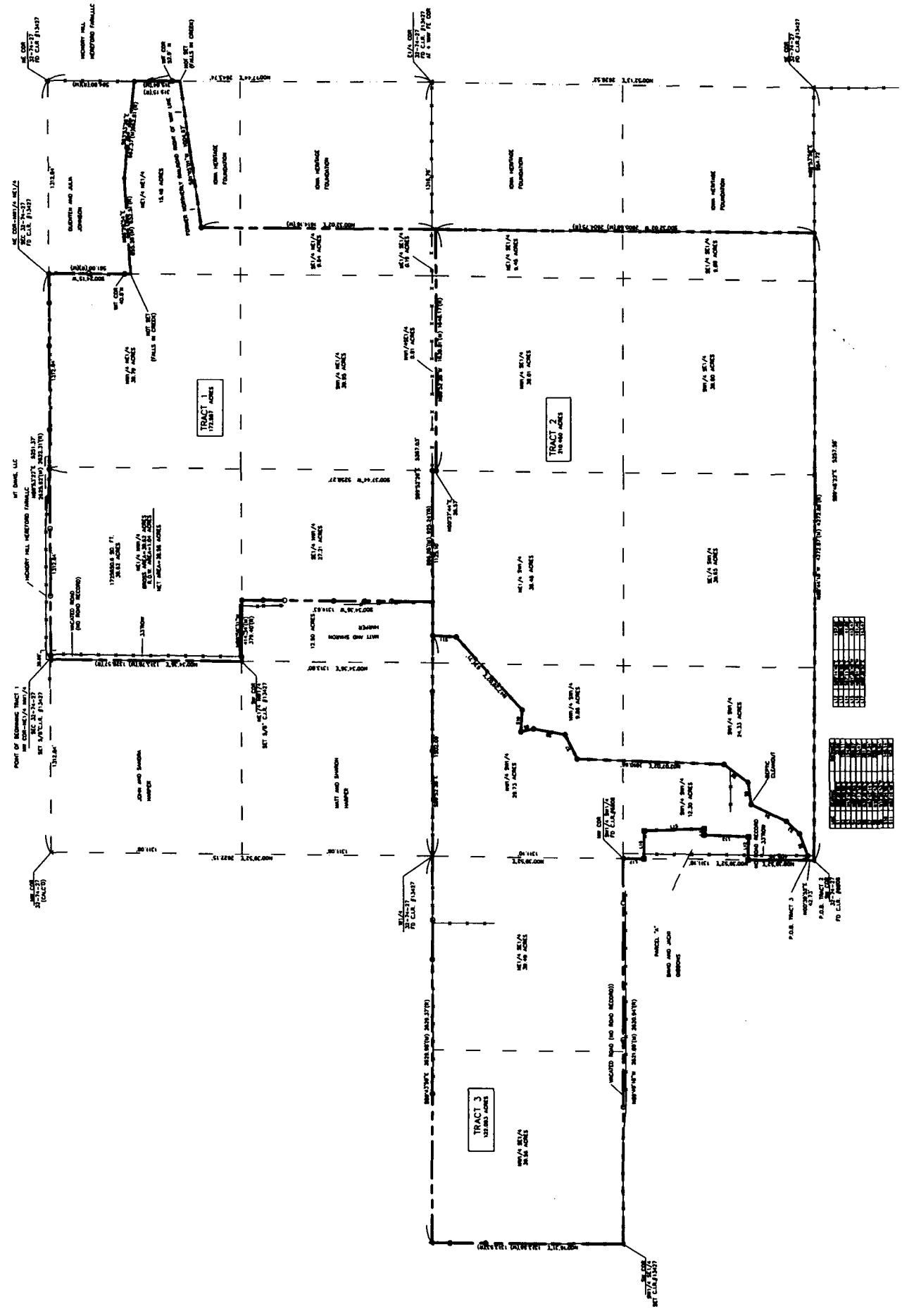
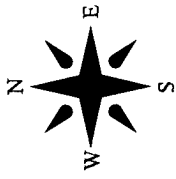
**Tract 3**  
The Northeast Quarter of the Southeast Quarter (NE1/4 SE1/4) and the Northeast Quarter of the Southwest Quarter (NE1/4 SW1/4) of Section 32, Township 74 North, Range 27 West of the 5th P.M., Madison County, Iowa.

As surveyed description:  
Beginning of the Southwest corner of Section 32, Township 74 North, Range 27 West of the 5th P.M.: thence N 00°39'52" E a distance of 42.73' to the Point of Beginning; thence N 00°39'52" E a distance of 409.30'; thence S 89°14'46" E a distance of 157.92'; thence N 02°09'05" E a distance of 305.90'; thence S 87°11'08" E a distance of 41.89'; thence N 01°35'40" W a distance of 412.47'; thence N 89°01'30" W a distance of 191.46'; thence N 00°39'52" E a distance of 143.47'; thence N 89°49'18" W a distance of 2621.09'; thence N 00°16'31" E a distance of 1313.55'; thence S 89°43'59" E a distance of 2629.98'; thence S 89°52'28" E a distance of 1502.09'; thence S 01°3'40" W a distance of 62.24'; thence N 47°29'02" E a distance of 871.71'; thence S 89°52'28" E a distance of 126.57'; thence S 12°56'43" E a distance of 148.14'; thence S 89°52'28" E a distance of 126.57'; thence S 00°32'02" W a distance of 220.39'; thence S 65°42'14" W a distance of 187.24'; thence S 02°07'02" W a distance of 1010.66'; thence S 36°39'08" W a distance of 201.95'; thence S 82°31'18" W a distance of 153.47'; thence S 25°37'03" W a distance of 269.57'; thence S 45°18'32" W a distance of 124.02'; thence S 89°00'09" W a distance of 159.11'; thence N 89°20'08" W a distance of 32.95' to the point of beginning. Containing 122.093 acres.

Surveyor's Note: this Plat corrects a Plat of Survey recorded in Book 2017 Page 1347 in the Office of the Madison County, Iowa Recorder.

**Boldman Surveying Consultants, L.L.C.**  
521 West Green Street  
Winterset, Iowa 50273  
O: 515-462-9242 C: 515-971-9242  
WWW.BoldmanSurveying.com

SHEET 1 OF 1



TRACT	ACRES
TRACT 1	177,887
TRACT 2	24,980
TRACT 3	12,840

TRACT	ACRES
TRACT 1	177,887
TRACT 2	24,980
TRACT 3	12,840

IOWA NATURAL HERITAGE FOUNDATION  
(COULSON) ACQUISITION SURVEY

PREPARED FOR  
IOWA DEPARTMENT OF NATURAL RESOURCES  
DATE OF FIELD SURVEY: FEBRUARY 2-MARCH 7, 2016