



Document 2017 1786

Book 2017 Page 1786 Type 06 043 Pages 1  
Date 6/08/2017 Time 2:49:54PM  
Rec Amt \$.00

INDX  
ANNO  
SCAN  
CHEK

LISA SMITH, COUNTY RECORDER  
MADISON COUNTY IOWA

Prepared By: Michael James Hackett, Madison County Engineer's Office, 1105 E. Court Ave., Winterset, Ia. 50273, Tel. (515) 462-1136

# UNITED STATES PUBLIC LAND SURVEY CORNER CERTIFICATE OF

Land Survey Monuments situated in Section 33, Township 76 N, Range 26 W, of the Fifth Principal Meridian, Madison County, Iowa.  
Previously recorded in Book 2014, Page 500 in County Recorder's Office.  
(book, page, document number, etc.)

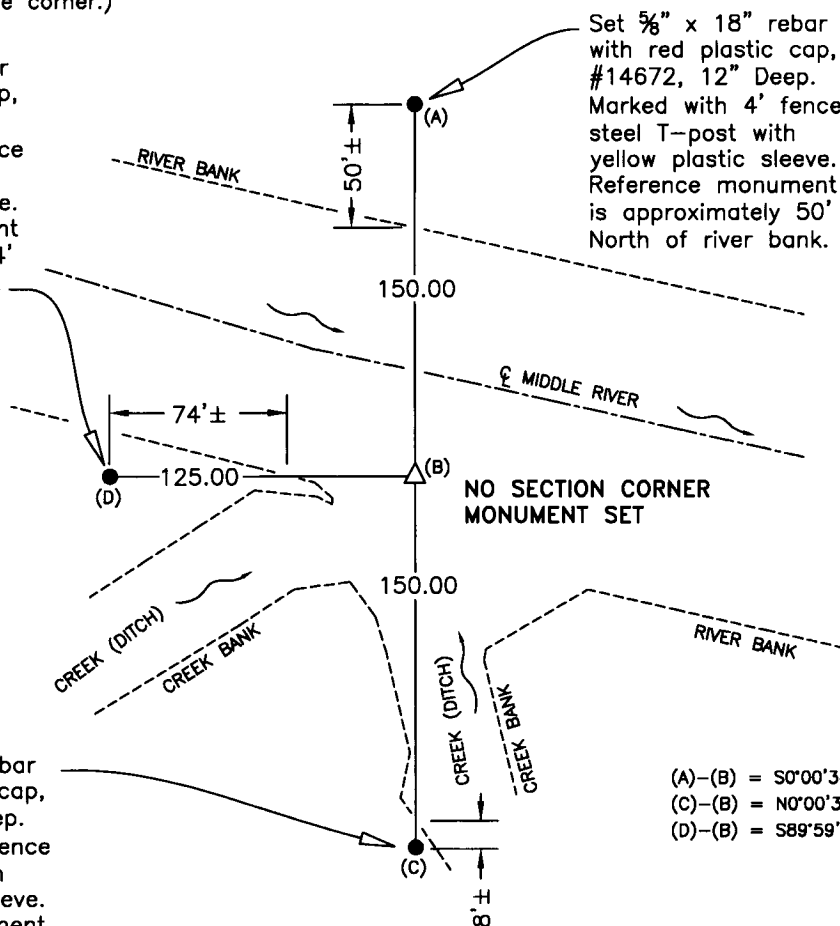
(Show reason for preparing this certificate, the evidence and detailed procedures used in establishing the corner positions and monumentation found or placed.)

Monument Description and Remarks: Looked for previously recorded reference monument and corner ties.  
The previously recorded reference monument and corner ties not found. Calculated the position of the corner based on the mid-point between the found northeast corner of the Northeast Quarter of the Northeast Quarter and the southeast corner of the Southeast Quarter of the Southeast Quarter. No section corner set due to the location of the corner position in Middle River. Set 3 reference monuments to the section corner. See plan view below for description of reference monuments.

## PLAN VIEW

(Show a minimum of three reference ties to durable physical objects, relevant monuments and physical conditions that will enable recovery of the corner.)

Set 5/8" x 18" rebar with red plastic cap, #14672, 12" Deep. Marked with 4' fence steel T-post with yellow plastic sleeve. Reference monument is approximately 74' West of river bank.



Set 5/8" x 18" rebar with red plastic cap, #14672, 12" Deep. Marked with 4' fence steel T-post with yellow plastic sleeve. Reference monument is approximately 50' North of river bank.

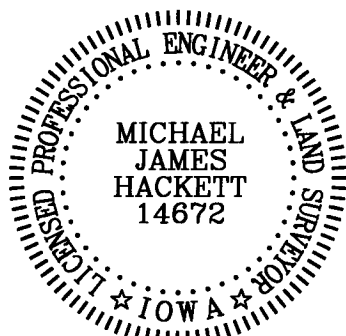
NO SECTION CORNER MONUMENT SET

Set 5/8" x 18" rebar with red plastic cap, #14672, 12" Deep. Marked with 4' fence steel T-post with yellow plastic sleeve. Reference monument is approximately 8' South of creek bank.

(A)-(B) = S0°00'34"W - 150.00  
(C)-(B) = N0°00'34"E - 150.00  
(D)-(B) = S89°59'26"E - 125.00

SE. COR., SE. 1/4, NE 1/4 SEC. 33

NOTE: ALL TIES TO "X" NAILS UNLESS NOTED



I hereby certify that this land surveying document was prepared and the related survey work was performed by me or under my direct personal supervision and that I am a duly Licensed Land Surveyor under the laws of the State of Iowa.  
Signed Michael James Hackett Date 6/7/2017  
Michael James Hackett

Iowa license number 14672.  
My license renewal date is 12/31/2018.  
Pages covered by this seal: 1.