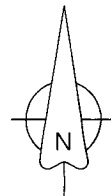


0 200 400 FEET



▲ NW COR.
SEC. 6
Nail in lead plug

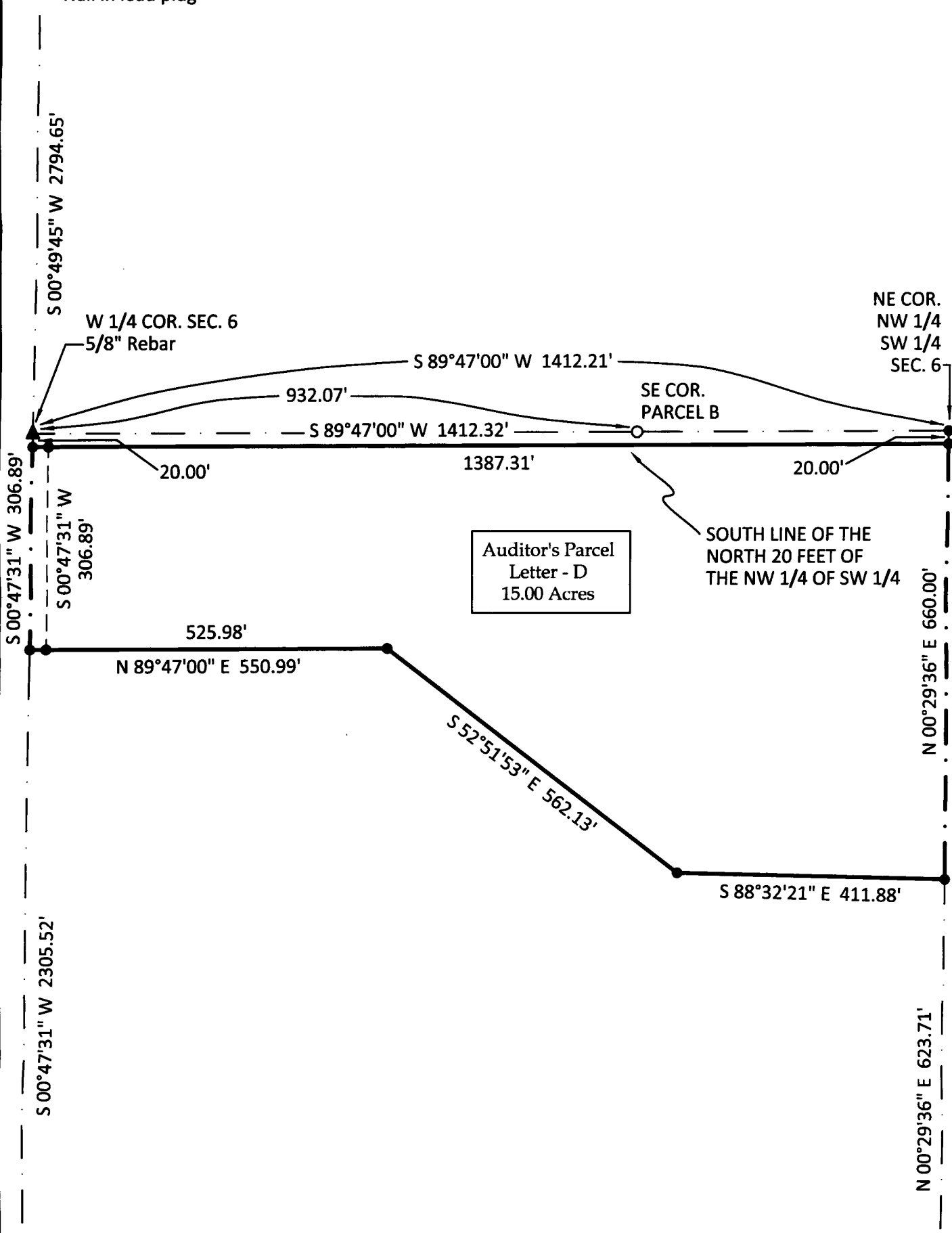
NE COR.
NW 1/4
SW 1/4
SEC. 6

W 1/4 COR. SEC. 6
5/8" Rebar

SE COR.
PARCEL B

Auditor's Parcel
Letter - D
15.00 Acres

SOUTH LINE OF THE
NORTH 20 FEET OF
THE NW 1/4 OF SW 1/4



▲ SW COR. SEC. 6
5/8" orange plastic
capped rebar, #7995

SE COR.
NW 1/4
SW 1/4
SEC. 6