

LISA SMITH, COUNTY RECORDER
 MADISON COUNTY IOWA

IOWA DEPARTMENT OF TRANSPORTATION 2210 E. 7TH ATLANTIC, IOWA 50022 712-243-2009

UNITED STATES PUBLIC LAND SURVEY CORNER CERTIFICATE

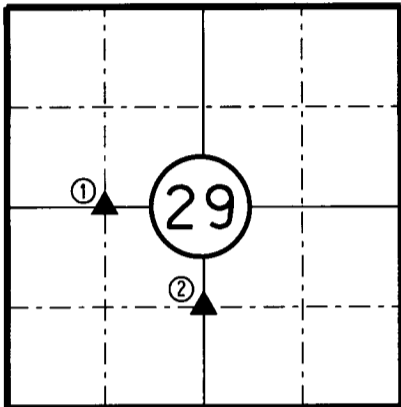
Section 29 Township 76N Range 26W County MADISON



Certificate Prepared For: RE-REFERENCING SECTION CORNERS ALONG
PRIMARY ROAD IA. 92.



R-26-W



I hereby certify that this land surveying document was prepared by me and the related survey work was performed by me or under my direct supervision and that I am a duly licensed Professional Land Surveyor under the laws of the State of Iowa.

William J. Fox 4-25-17
 WILLIAM J. FOX Date

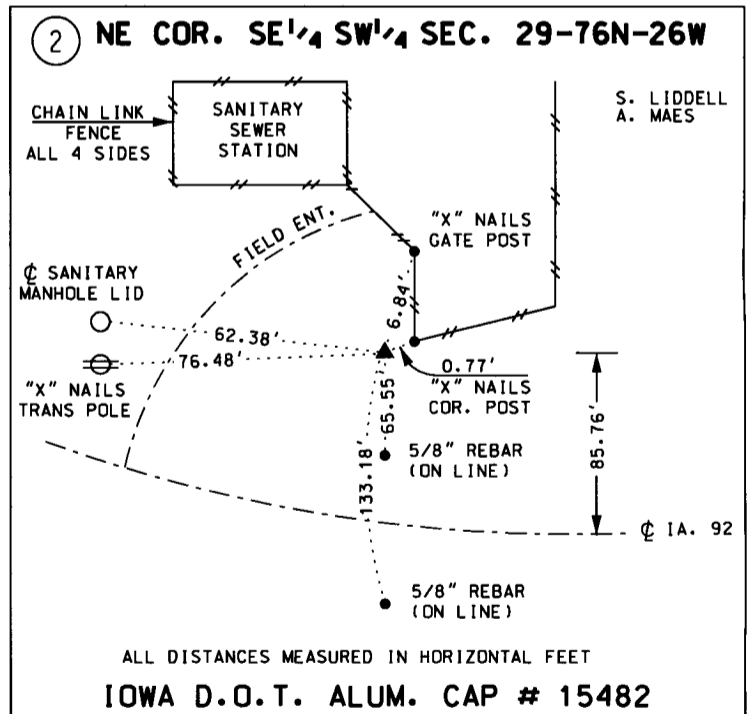
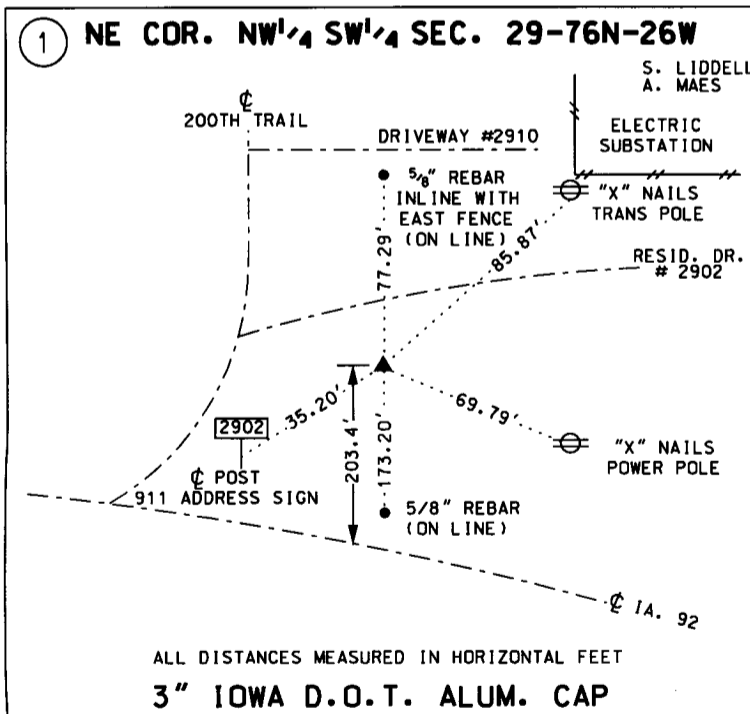
License number 15482
 Pages covered by this seal 1
 My License Renewal date is December 31, 2017

MADISON
 COUNTY

MONUMENT DESCRIPTION AND REMARKS:

(1) Found 3" diameter Iowa D.O.T. aluminum cap 1.0' deep. Verified by using existing D.O.T. ties.

(2) Found 1/2" rebar with bent spinner. replace with 5/8" x 40" rebar with aluminum cap number 15482 0.4' deep. Verified by using existing D.O.T. ties from construction as-builts plans and acquisition plats.



LIST CORNERS TO BE INDEXED:

CORNERS	SECTION	TWP.	RANGE
NE COR.	29	76N	26W
NW SW			
NE COR.	29	76N	26W
SE SW			