

LISA SMITH, COUNTY RECORDER
MADISON COUNTY IOWA

IOWA DEPARTMENT OF TRANSPORTATION 2210 E. 7TH ATLANTIC, IOWA 50022 712-243-2009

UNITED STATES PUBLIC LAND SURVEY CORNER CERTIFICATE

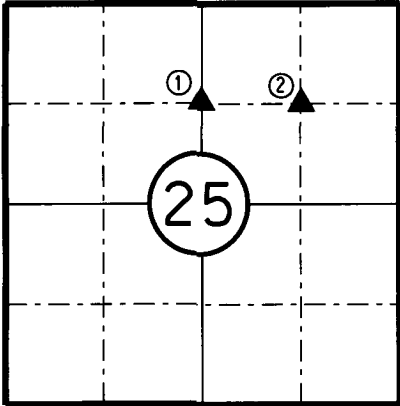
Section 25 Township 76N Range 27W County MADISON



Certificate Prepared For: RE-REFERENCING SECTION CORNERS ALONG
PRIMARY ROAD IA. 92.



R-27-W



T-76-N



I hereby certify that this land surveying document was prepared by me and the related survey work was performed by me or under my direct supervision and that I am a duly licensed Professional Land Surveyor under the laws of the State of Iowa.

William J. Fox 4-26-17
WILLIAM J. FOX Date

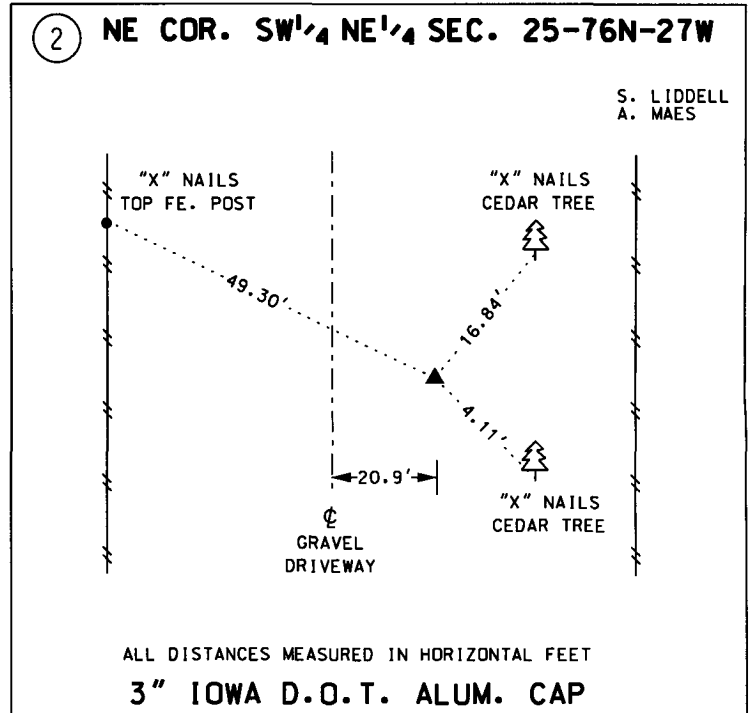
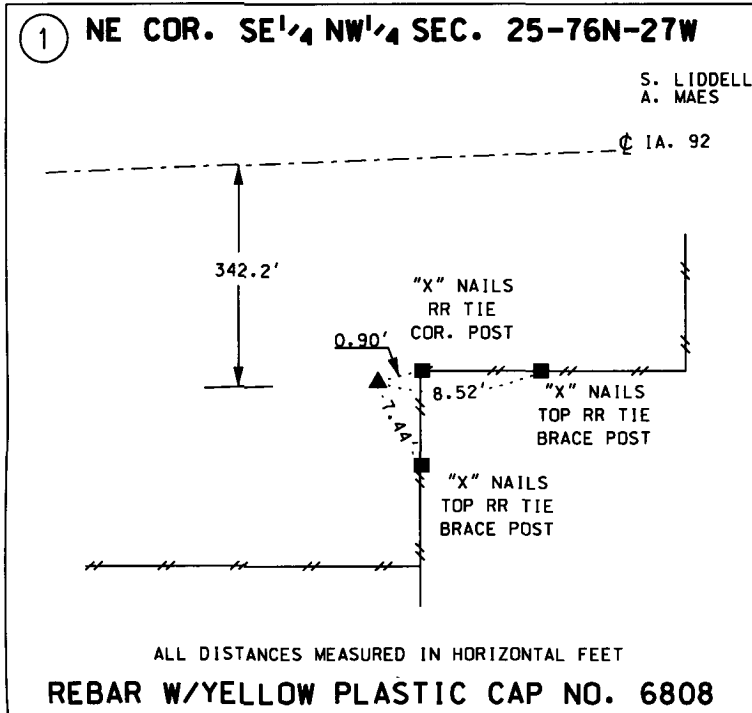
License number 15482
Pages covered by this seal 1
My License Renewal date is December 31, 2017

MADISON
COUNTY

MONUMENT DESCRIPTION AND REMARKS:

(1) Found rebar with plastic cap no. 6808, 0.1' above ground level. Verified by using existing D.O.T. ties.

(2) Found 3" diameter Iowa D.O.T. aluminum cap 0.2' deep. Verified by using existing D.O.T. ties from construction as-builts plans and acquisition plats.



LIST CORNERS TO BE INDEXED:			
CORNERS	SECTION	TWP.	RANGE
NE COR. SE NW	25	76N	27W
NE COR. SW NE	25	76N	27W