

LISA SMITH, COUNTY RECORDER
MADISON COUNTY IOWA

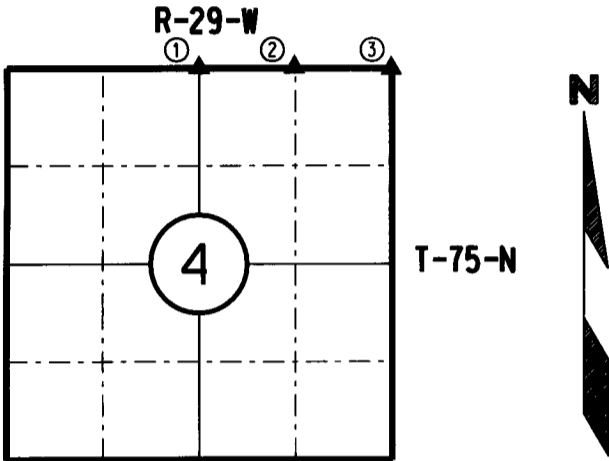
CHEK

IOWA DEPARTMENT OF TRANSPORTATION, 2210 E. 7th STREET, ATLANTIC, IOWA 50022 712-243-2009

UNITED STATES PUBLIC LAND SURVEY CORNER CERTIFICATE

Section 4 Township 75N Range 29W County MADISON

Certificate Prepared For: RE-REFERENCING SECTION CORNERS ALONG
PRIMARY ROAD IA. 92.



I hereby certify that this land surveying document was prepared by me and the related survey work was performed by me or under my direct supervision and that I am a duly licensed Professional Land Surveyor under the laws of the State of Iowa.

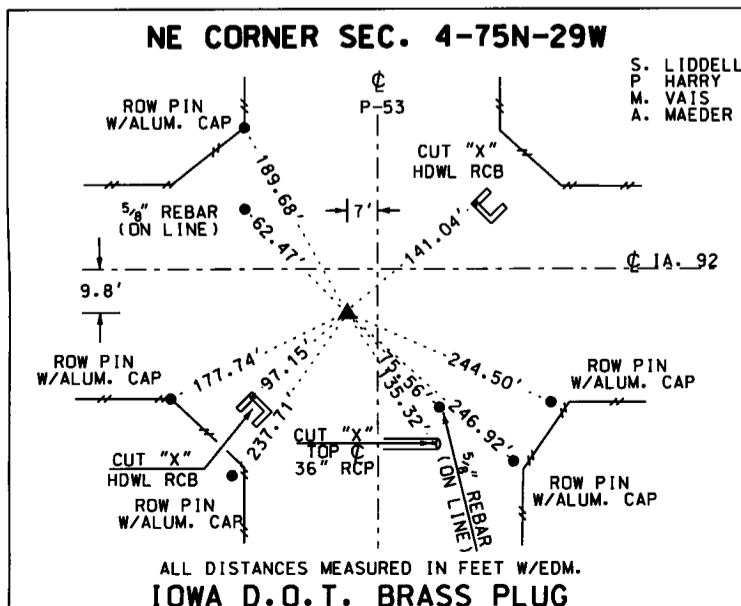
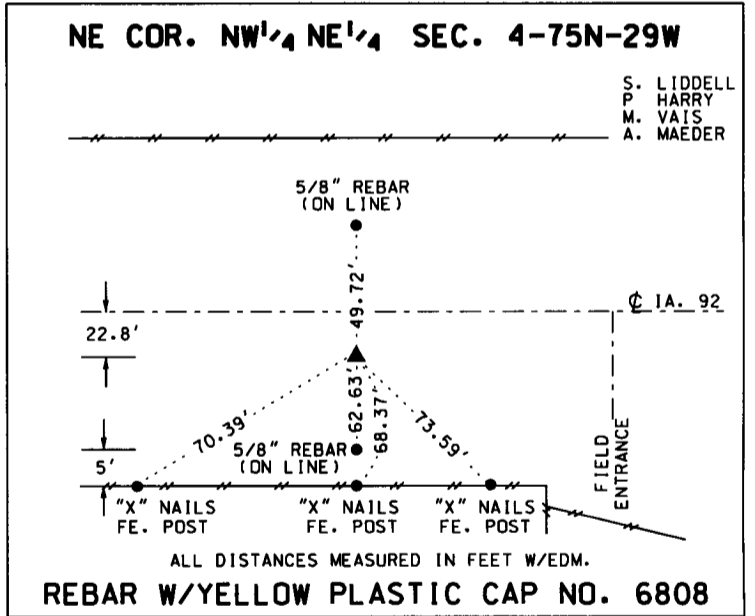
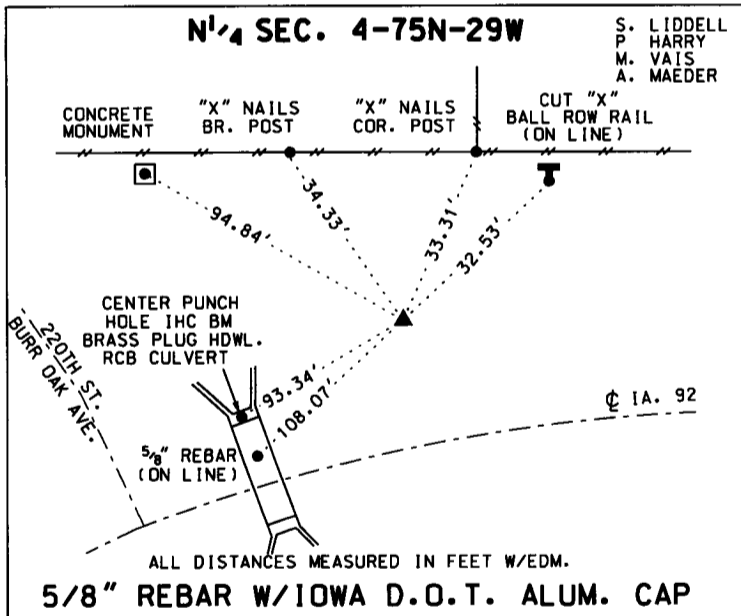
William J. Fox 4-26-17
WILLIAM J. FOX Date

License number 15482
Pages covered by this seal 1
My License Renewal date is December 31, 2017

MADISON COUNTY

MONUMENT DESCRIPTION AND REMARKS:

- (1) Found 5/8" rebar with Iowa D.O.T. aluminum cap 0.1' deep. Found by using existing Iowa D.O.T. ties.
- (2) Found rebar with yellow plastic cap no. 6808 0.1' deep. Found by using existing Iowa D.O.T. ties.
- (3) Found hole in asphalt pavement with sound. Set Iowa D.O.T. brass plug after asphalt overlay. Found by using existing Iowa D.O.T. Ties.



LIST CORNERS TO BE INDEXED:

CORNERS	SECTION	TWP.	RANGE
N 1/4	4	75	29
NE COR NW 1/4 NE 1/4	4	75	29
NE	4	75	29