

LISA SMITH, COUNTY RECORDER
MADISON COUNTY IOWA

IOWA DEPARTMENT OF TRANSPORTATION 2210 E. 7TH ATLANTIC, IOWA 50022 712-243-2009

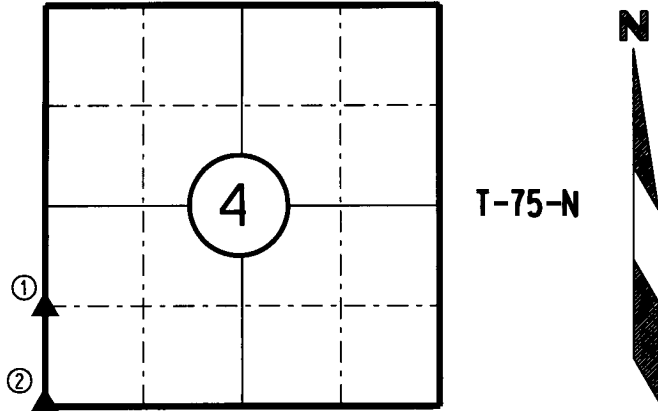
UNITED STATES PUBLIC LAND SURVEY CORNER CERTIFICATE

Section 4 Township 75N Range 29W County MADISON

Certificate Prepared For: RE-REFERENCING SECTION CORNERS ALONG
PRIMARY ROAD IA. 92.



R-29-W



I hereby certify that this land surveying document was prepared by me and the related survey work was performed by me or under my direct supervision and that I am a duly licensed Professional Land Surveyor under the laws of the State of Iowa.

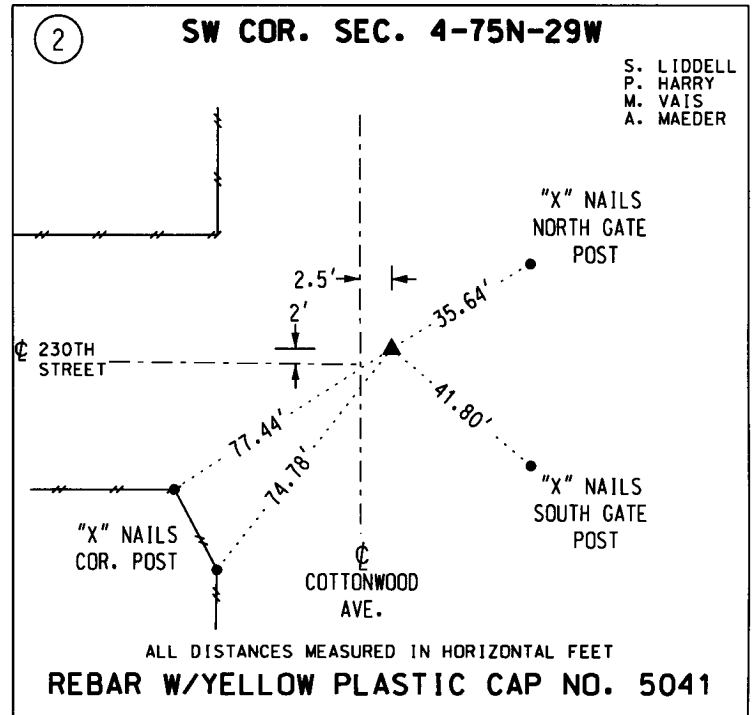
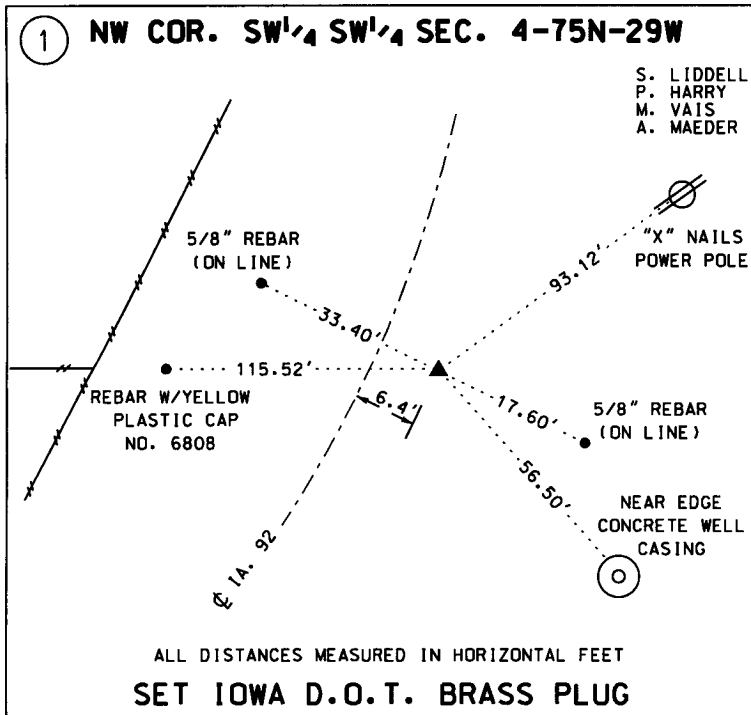
William J. Fox 4-26-17
WILLIAM J. FOX Date

License number 15482
Pages covered by this seal 1
My License Renewal date is December 31, 2017

MADISON COUNTY

MONUMENT DESCRIPTION AND REMARKS:

- (1) Found bent "PK" nail in east bound lane of Iowa. 92. Set Iowa D.O.T. brass plug after asphalt overlay. Verified by using existing D.O.T. ties from construction as-builts plans and acquisition plats.
- (1) Found Rebar with yellow plastic cap, no. 5041, 0.1' deep. Verified by using existing D.O.T. ties.



LIST CORNERS TO BE INDEXED:			
CORNERS	SECTION	TWP.	RANGE
NE COR. SE ¹ / ₄ SE ¹ / ₄	4	75N	29W
SW COR.	4	75N	29W