



Document 2017 1458

Book 2017 Page 1458 Type 06 043 Pages 1  
Date 5/10/2017 Time 10:38:05AM  
Rec Amt \$7.00

INDX  
ANNO  
SCAN  
CHEK

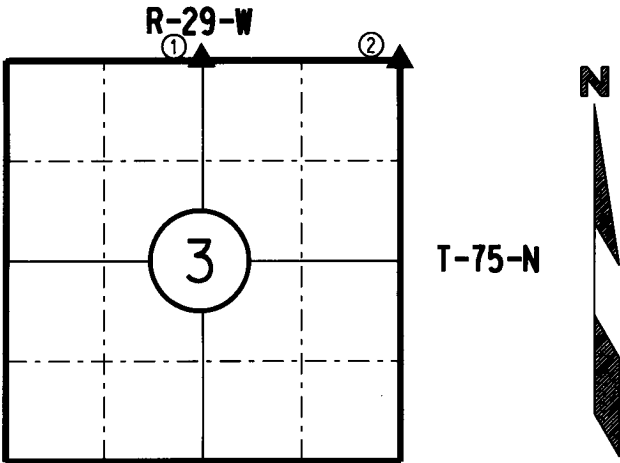
LISA SMITH, COUNTY RECORDER  
MADISON COUNTY IOWA

IOWA DEPARTMENT OF TRANSPORTATION 2210 E. 7TH ATLANTIC, IOWA 50022 712-243-2009

# UNITED STATES PUBLIC LAND SURVEY CORNER CERTIFICATE

Section 3 Township 75N Range 29W County MADISON

Certificate Prepared For: RE-REFERENCING SECTION CORNERS ALONG  
PRIMARY ROAD IA. 92.



I hereby certify that this land surveying document was prepared by me and the related survey work was performed by me or under my direct supervision and that I am a duly licensed Professional Land Surveyor under the laws of the State of Iowa.

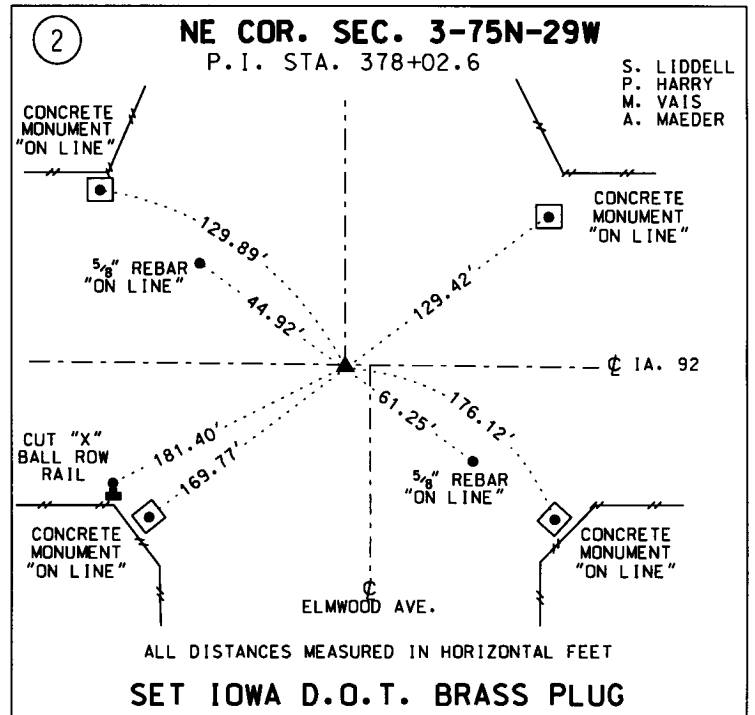
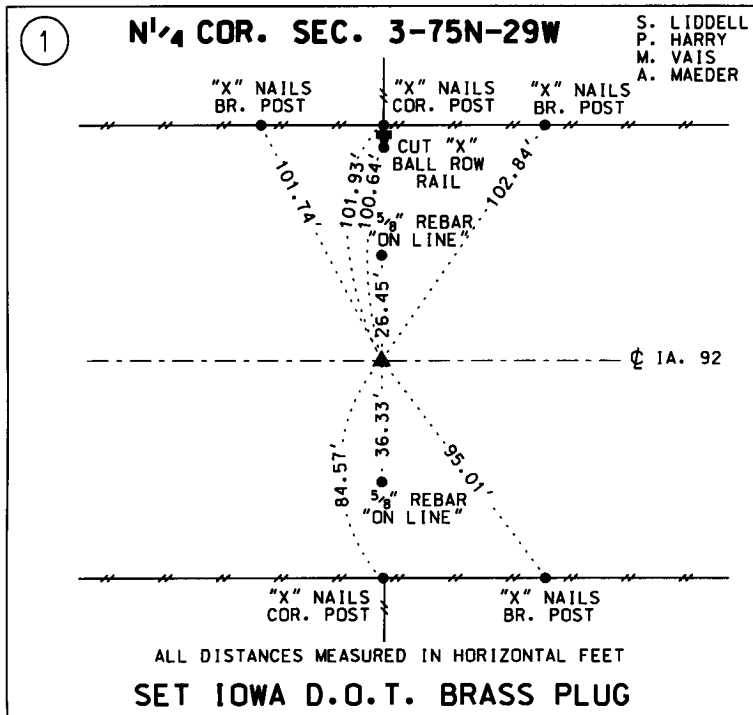
*William J. Fox* 4-26-17  
WILLIAM J. FOX Date

License number 15482  
Pages covered by this seal 1  
My License Renewal date is December 31, 2017

MADISON COUNTY

### MONUMENT DESCRIPTION AND REMARKS:

- (1) Found "PK" nail near centerline of Iowa 92. Set Iowa D.O.T. brass plug after asphalt overlay. Verified by using existing D.O.T. ties.
- (2) Found nail hole that fit previous ties. Set Iowa D.O.T. brass plug after asphalt overlay. Verified by using existing D.O.T. ties from construction as-builts plans and acquisition plats.



LIST CORNERS TO BE INDEXED:			
CORNERS	SECTION	TWP.	RANGE
N <sup>1</sup> / <sub>4</sub> COR.	3	75N	29W
NE COR.	3	75N	29W