

LISA SMITH, COUNTY RECORDER
MADISON COUNTY IOWA

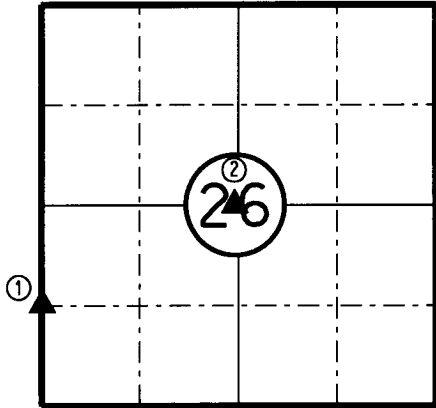
IOWA DEPARTMENT OF TRANSPORTATION 2210 E. 7TH ATLANTIC, IOWA 50022 712-243-2009

UNITED STATES PUBLIC LAND SURVEY CORNER CERTIFICATE

Section 26 Township 76N Range 27W County MADISON

Certificate Prepared For: RE-REFERENCING SECTION CORNERS ALONG
PRIMARY ROAD IA. 92.

R-27-W



T-76-N



I hereby certify that this land surveying document was prepared by me and the related survey work was performed by me or under my direct supervision and that I am a duly licensed Professional Land Surveyor under the laws of the State of Iowa.

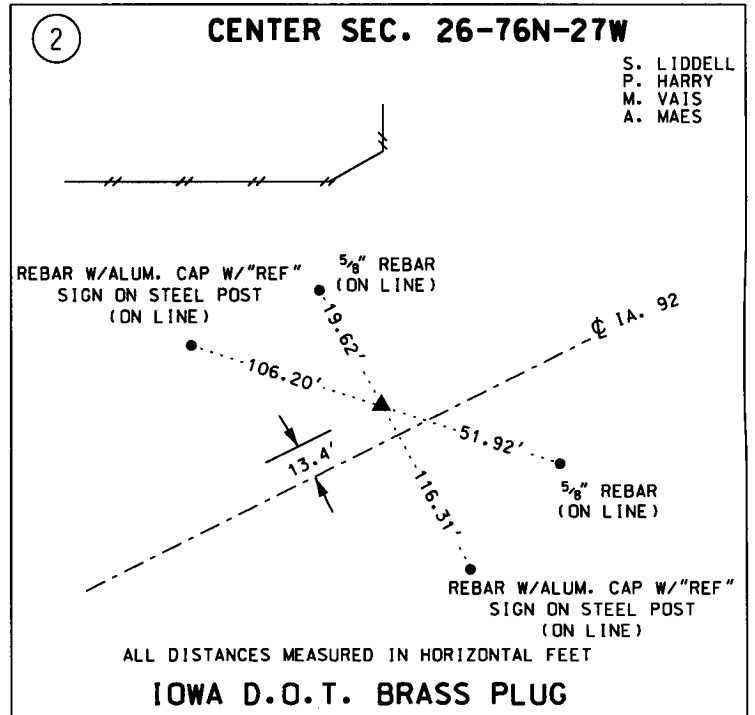
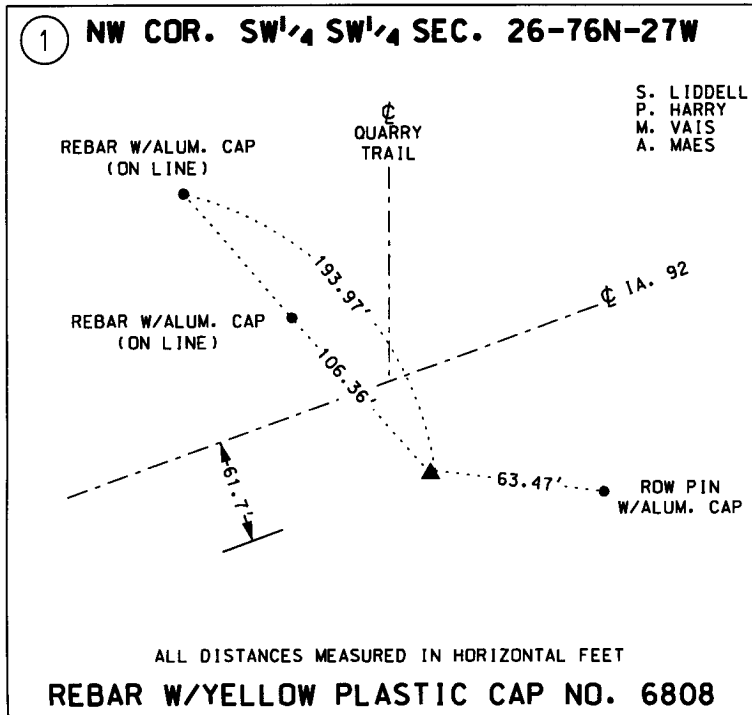
William J. Fox 4-26-17
WILLIAM J. FOX Date

License number 15482
Pages covered by this seal 1
My License Renewal date is December 31, 2017

MADISON
COUNTY

MONUMENT DESCRIPTION AND REMARKS:

- (1) Found rebar with plastic cap no. 6808, 0.2' deep. Verified by using existing D.O.T. ties.
- (2) Found 3/4" open pipe 0.8' off NW edge of pavement. Replace with Iowa D.O.T. brass plug. Verified by using existing D.O.T. ties from construction as-builts plans and acquisition plans.



LIST CORNERS TO BE INDEXED:			
CORNERS	SECTION	TWP.	RANGE
NW COR.	26	76N	27W
SW SW			
CENTER	26	76N	27W