



Document 2017 1464

Book 2017 Page 1464 Type 06 043 Pages 1
Date 5/10/2017 Time 10:38:11AM
Rec Amt \$7.00

INDX
ANNO
SCAN
CHEK

LISA SMITH, COUNTY RECORDER
MADISON COUNTY IOWA

IOWA DEPARTMENT OF TRANSPORTATION 2210 E. 7TH ATLANTIC, IOWA 50022 712-243-2009

UNITED STATES PUBLIC LAND SURVEY CORNER CERTIFICATE

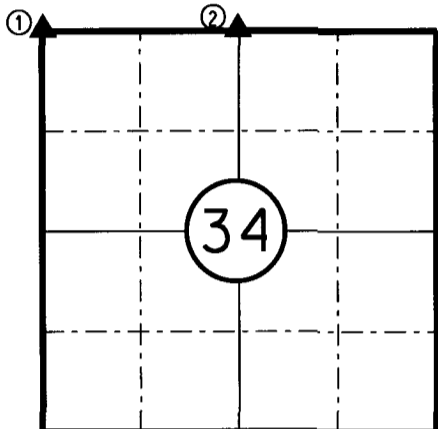
Section 34 Township 76N Range 27W County MADISON



Certificate Prepared For: RE-REFERENCING SECTION CORNERS ALONG
PRIMARY ROAD IA. 92.



R-27-W



T-76-N



I hereby certify that this land surveying document was prepared by me and the related survey work was performed by me or under my direct supervision and that I am a duly licensed Professional Land Surveyor under the laws of the State of Iowa.

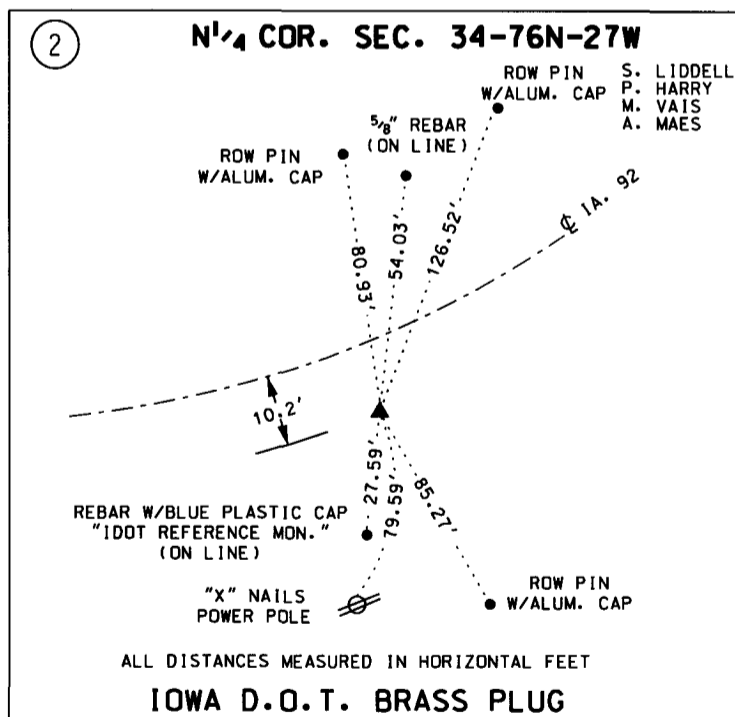
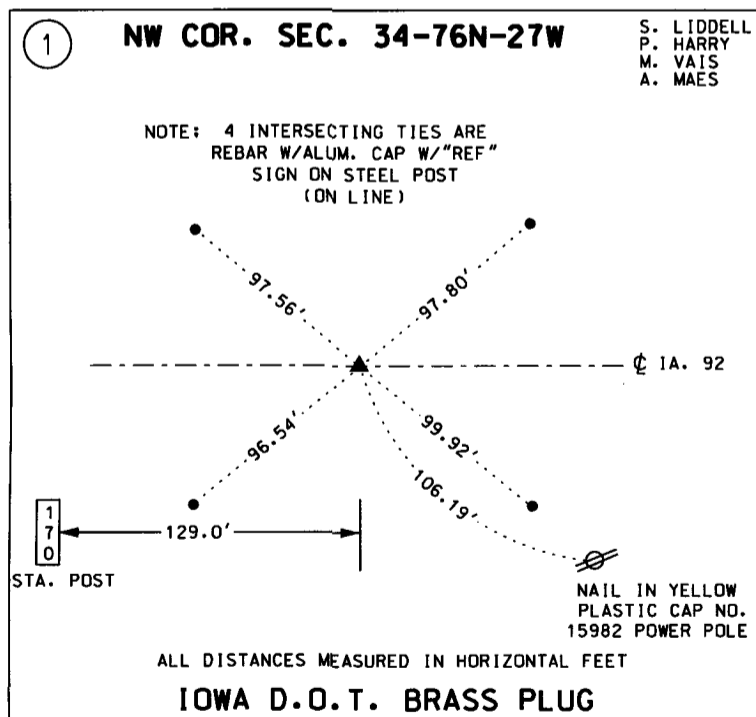
William J. Fox 4-26-17
WILLIAM J. FOX Date

License number 15482
Pages covered by this seal 1
My License Renewal date is December 31, 2017

MADISON
COUNTY

MONUMENT DESCRIPTION AND REMARKS:

- (1) Found Iowa D.O.T. brass plug in asphalt pavement of Iowa 92. Verified by using existing D.O.T. ties.
- (2) Found small "PK" nail in asphalt, replace nail with Iowa D.O.T. brass plug. Verified by using existing D.O.T. ties from construction as-builts plans and acquisition plats.



LIST CORNERS TO BE INDEXED:			
CORNERS	SECTION	TWP.	RANGE
NW COR.	34	76N	27W
N ¹ / ₄ COR.	34	76N	27W