



Document 2017 1463

Book 2017 Page 1463 Type 06 043 Pages 1  
Date 5/10/2017 Time 10:38:10AM  
Rec Amt \$7.00

INDX  
ANNO  
SCAN  
CHEK

LISA SMITH, COUNTY RECORDER  
MADISON COUNTY IOWA

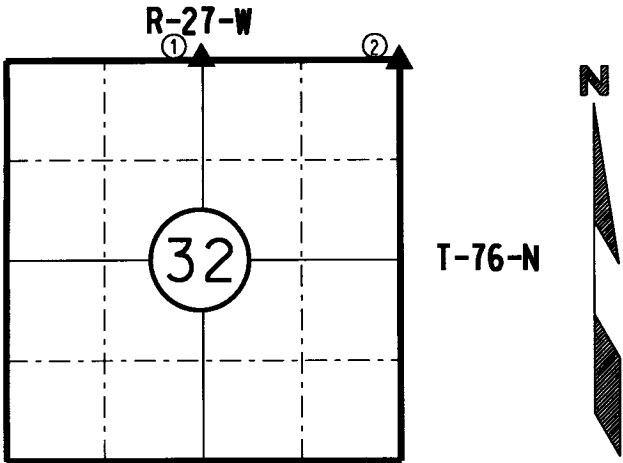
IOWA DEPARTMENT OF TRANSPORTATION 2210 E. 7TH ATLANTIC, IOWA 50022 712-243-2009

# UNITED STATES PUBLIC LAND SURVEY CORNER CERTIFICATE

Section 32 Township 76N Range 27W County MADISON



Certificate Prepared For: RE-REFERENCING SECTION CORNERS ALONG  
PRIMARY ROAD IA. 92.



I hereby certify that this land surveying document was prepared by me and the related survey work was performed by me or under my direct supervision and that I am a duly licensed Professional Land Surveyor under the laws of the State of Iowa.

*William J. Fox* 4-26-17  
WILLIAM J. FOX Date

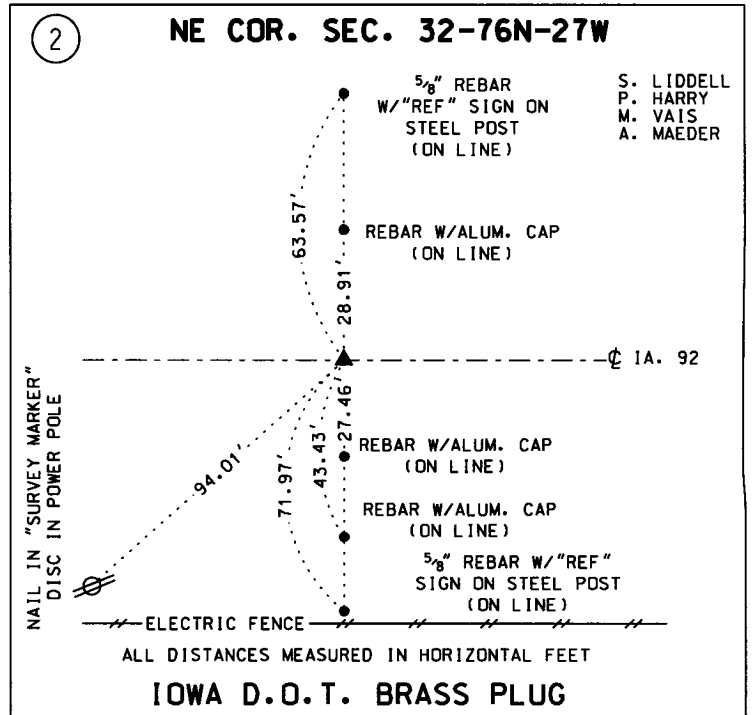
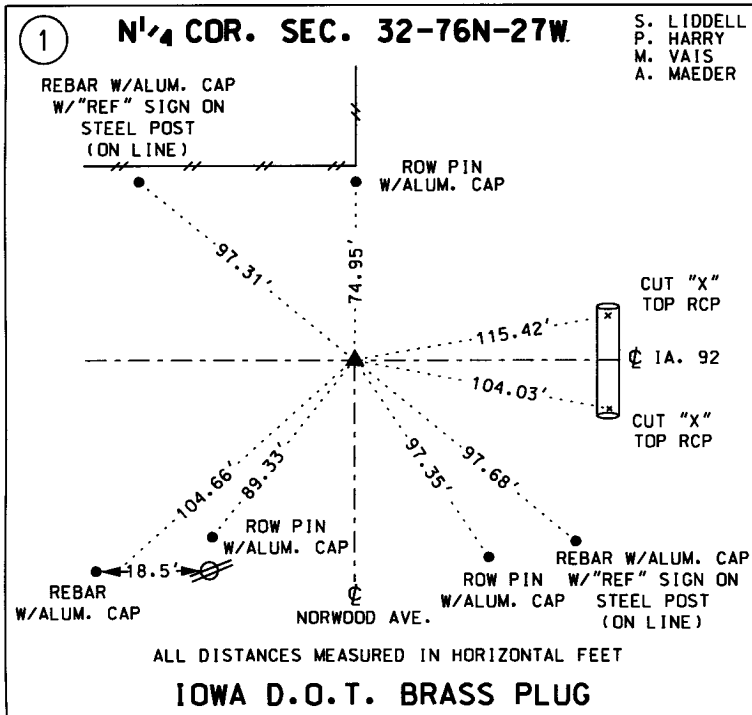
License number 15482  
Pages covered by this seal 1  
My License Renewal date is December 31, 2017

MADISON COUNTY

## MONUMENT DESCRIPTION AND REMARKS:

(1) Found Iowa D.O.T. brass plug in asphalt pavement of Iowa 92. Verified by using existing D.O.T. ties.

(2) Found Iowa D.O.T. brass plug in asphalt pavement. Verified by using existing D.O.T. ties from construction as-builts plans and acquisition plats.



LIST CORNERS TO BE INDEXED:			
CORNERS	SECTION	TWP.	RANGE
N <sup>1</sup> / <sub>4</sub> COR.	32	76N	27W
NE COR.	32	76N	27W