



Document 2017 1461

Book 2017 Page 1461 Type 06 043 Pages 1
Date 5/10/2017 Time 10:38:08AM
Rec Amt \$7.00

INDX
ANNO
SCAN

LISA SMITH, COUNTY RECORDER
MADISON COUNTY IOWA

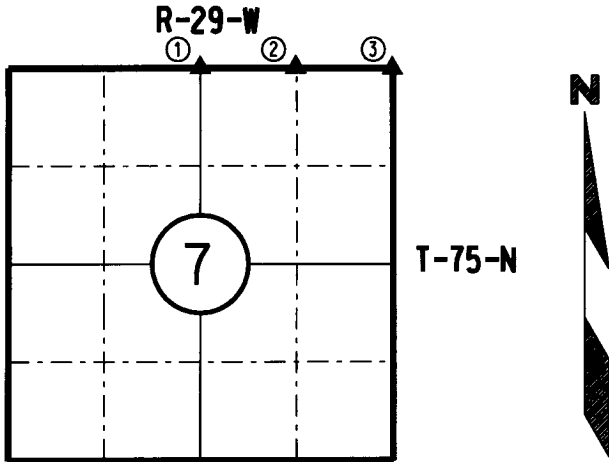
CHEK

IOWA DEPARTMENT OF TRANSPORTATION, 2210 E. 7th STREET, ATLANTIC, IOWA 50022 712-243-2009

UNITED STATES PUBLIC LAND SURVEY CORNER CERTIFICATE

Section 7 Township 75N Range 29W County MADISON

Certificate Prepared For: RE-REFERENCING SECTION CORNERS ALONG
PRIMARY ROAD IA. 92.



I hereby certify that this land surveying document was prepared by me and the related survey work was performed by me or under my direct supervision and that I am a duly licensed Professional Land Surveyor under the laws of the State of Iowa.

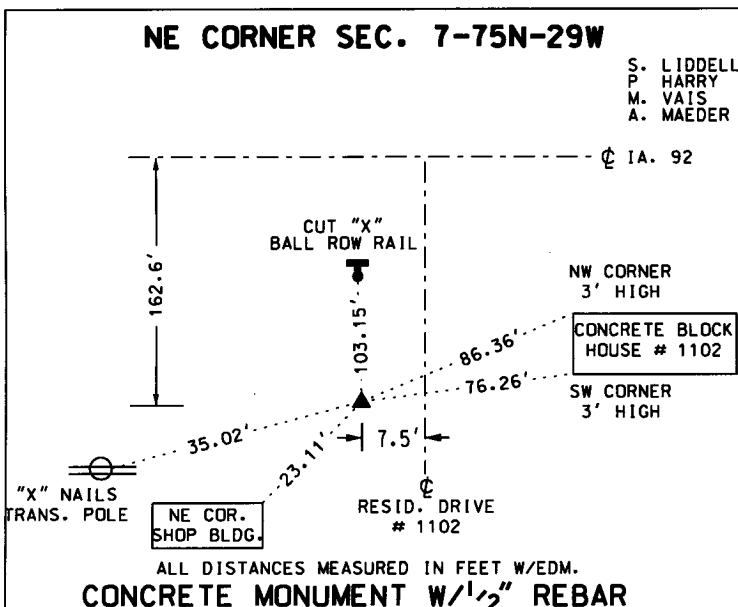
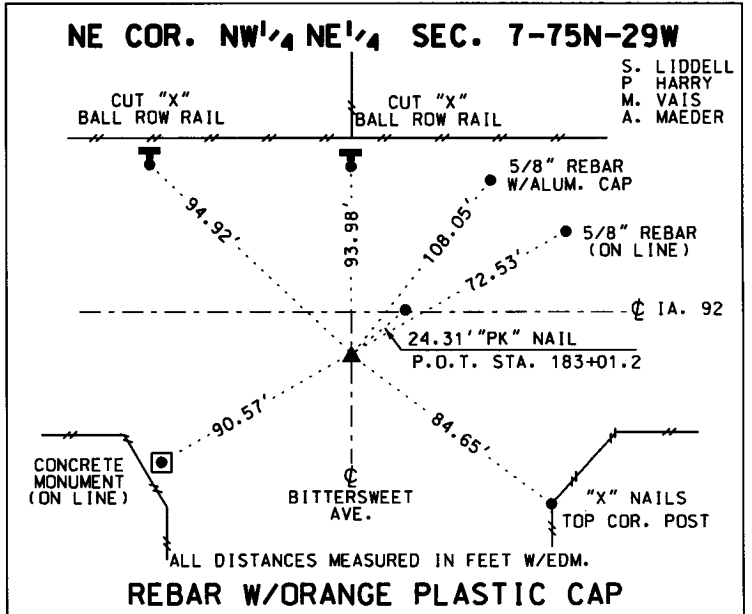
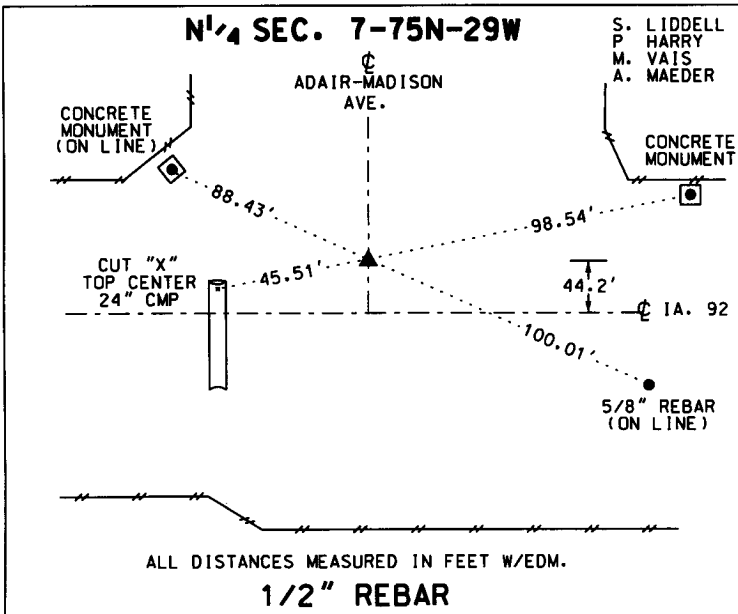
William J. Fox 4-26-17
WILLIAM J. FOX Date

License number 15482
Pages covered by this seal 1
My License Renewal date is December 31, 2017

MADISON COUNTY

MONUMENT DESCRIPTION AND REMARKS:

- (1) Found 16d nail with 1/2" rebar directly below 16d nail 1.6' deep. Found by using existing Iowa D.O.T. ties.
- (2) Found rebar with unreadable orange plastic cap flush with gravel road. Found by using existing Iowa D.O.T. ties.
- (3) Found concrete monument with 1/2" rebar, 0.4' deep. Found by using existing Iowa D.O.T. Ties.



LIST CORNERS TO BE INDEXED:

CORNERS	SECTION	TWP.	RANGE
N 1/4	7	75	29
NE COR NW 1/4 NE 1/4	7	75	29
NE	7	75	29