



Document 2017 977

Book 2017 Page 977 Type 06 043 Pages 1

Date 3/28/2017 Time 3:44:08PM

Rec Amt \$7.00

INDX
ANNO
SCAN

LISA SMITH, COUNTY RECORDER
MADISON COUNTY IOWA

CHEK

PREPARED BY: CRAIG S. BOLDMAN 521 WEST GREEN STREET, WINTERSET, IA 50273 PHONE (515)462-9242

UNITED STATES PUBLIC LAND SURVEY CORNER CERTIFICATE

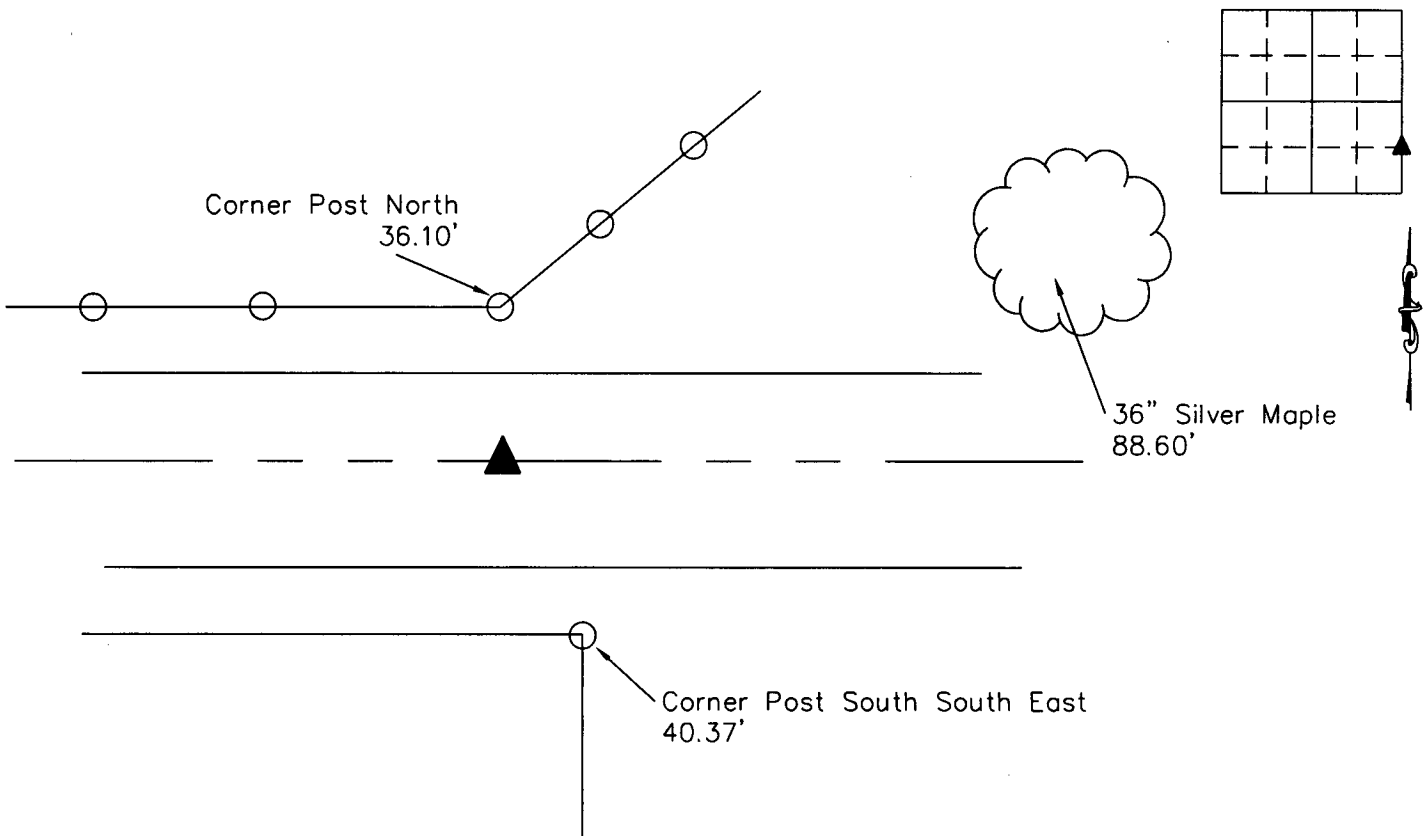
Land Survey Monuments situated in Section 15, Township 76N, Range 26W, the Fifth Principal Meridian, Madison County, Iowa.
Previously recorded in Book 2003 Page 4916 in County Recorder's Office

(Show reason for preparing this certificate, the evidence and detailed procedures used in establishing the corner positions & monumentation found or placed)

Monument Description and Remarks:

NE Corner NE1/4 NE1/4- retied to new reference points. Original tie points were obliterated

PLAN-VIEW



NOTE: ALL TIES TO ORANGE PLASTIC SURVEY MARKES UNLESS NOTED

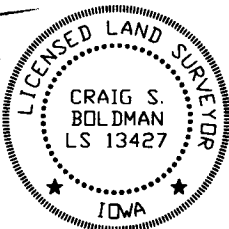
I HEREBY CERTIFY THAT THIS LAND SURVEYING DOCUMENT WAS PREPARED AND THE RELATED SURVEY WORK WAS PERFORMED BY ME OR UNDER MY DIRECT PERSONAL SUPERVISION AND THAT I AM A DULY LICENSED LAND SURVEYOR UNDER THE LAWS OF THE STATE OF IOWA

SIGNATURE Craig S. Boldman
CRAIG S. BOLDMAN

DATE: 3/28/17 LICENSE NO 13427

MY RENEWAL DATE IS DECEMBER 31, 2018

COVERS SHEETS 1



CORNERS TO BE INDEXED

Corners	Section	Township	Range
NE COR NE1/4 NE1/4	15	76	26

Project No. 17011