



Document 2017 976

Book 2017 Page 976 Type 06 043 Pages 1

Date 3/28/2017 Time 3:43:08PM

Rec Amt \$7.00

INDX
ANNO
SCAN
CHEK

LISA SMITH, COUNTY RECORDER
MADISON COUNTY IOWA

PREPARED BY: CRAIG S. BOLDMAN 521 WEST GREEN STREET, WINTERSET, IA 50273 PHONE (515)462-9242

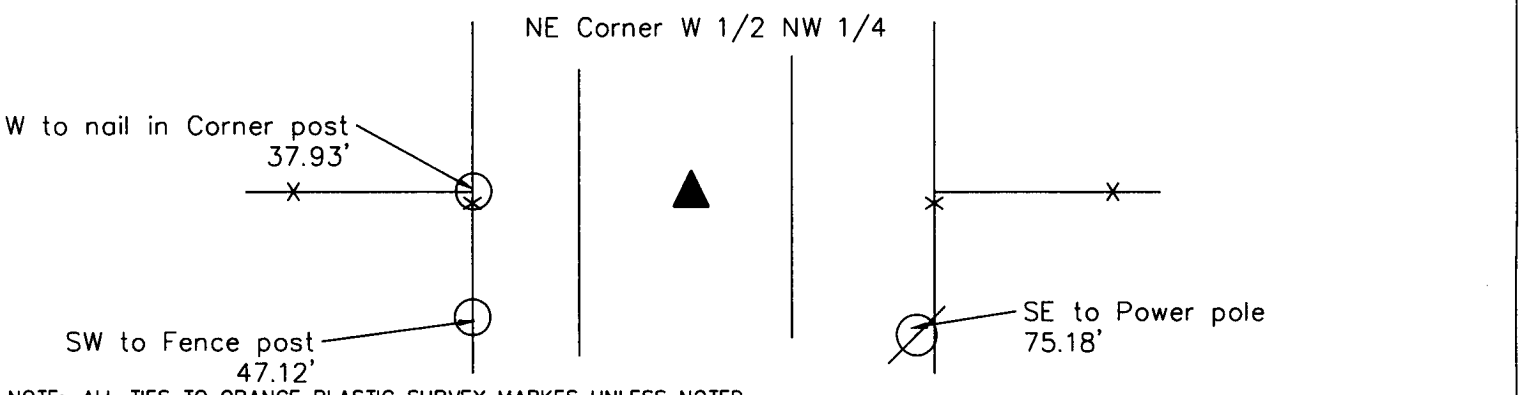
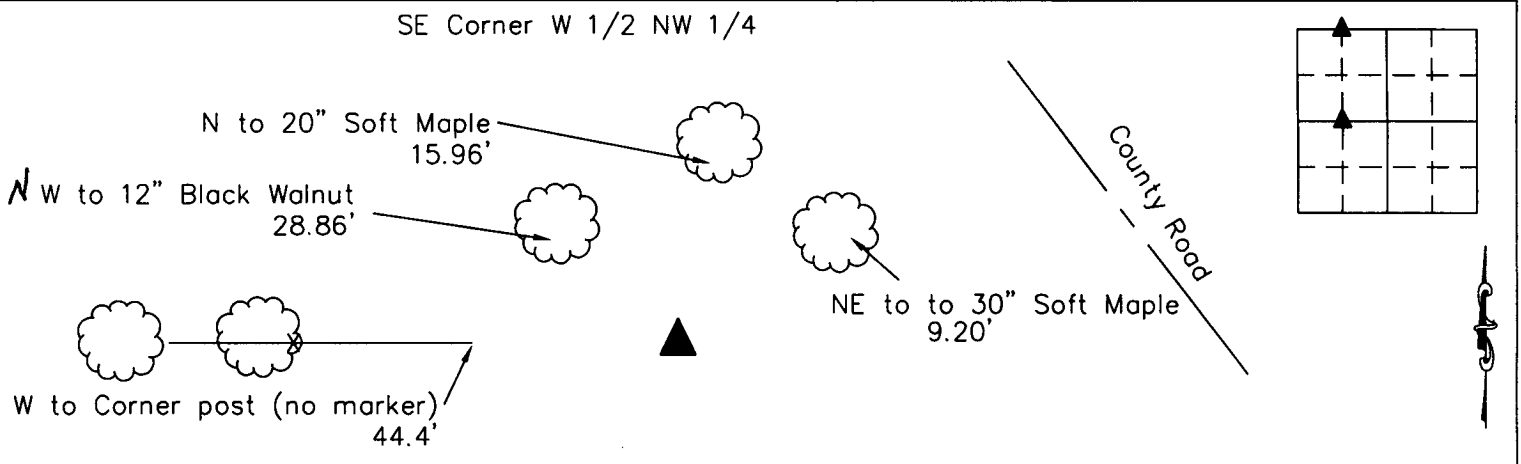
UNITED STATES PUBLIC LAND SURVEY CORNER CERTIFICATE

Land Survey Monuments situated in Section 9, Township 74, Range 28, the Fifth Principal Meridian, Madison County, Iowa.
Previously recorded in None in County Recorder's Office

(Show reason for preparing this certificate, the evidence and detailed procedures used in establishing the corner positions & monumentation found or placed)

Monument Description and Remarks:
No certificate on file

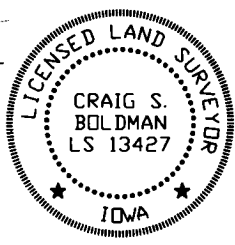
PLAN-VIEW



NOTE: ALL TIES TO ORANGE PLASTIC SURVEY MARKS UNLESS NOTED

I HEREBY CERTIFY THAT THIS LAND SURVEYING DOCUMENT WAS PREPARED AND THE RELATED SURVEY WORK WAS PERFORMED BY ME OR UNDER MY DIRECT PERSONAL SUPERVISION AND THAT I AM A DULY LICENSED LAND SURVEYOR UNDER THE LAWS OF THE STATE OF IOWA

SIGNATURE Craig S. Boldman
CRAIG S. BOLDMAN
DATE: 3/28/17 LICENSE NO 13427
MY RENEWAL DATE IS DECEMBER 31, 2018
COVERS SHEETS 1



CORNERS TO BE INDEXED			
Corners	Section	Township	Range
SE W 1/2 NW 1/4	9	74	28
NE W 1/2 NW 1/4	9	74	28

Project No. 17001