



Document 2017 471

Book 2017 Page 471 Type 06 043 Pages 1
Date 2/10/2017 Time 2:45:58PM
Rec Amt \$.00

INDX
ANNO
SCAN
CHEK

LISA SMITH, COUNTY RECORDER
MADISON COUNTY IOWA

Prepared By: Michael James Hackett, Madison County Engineer's Office, 1105 E. Court Ave., Winterset, Ia. 50273, Tel. (515) 462-1136

UNITED STATES PUBLIC LAND SURVEY CORNER CERTIFICATE OF

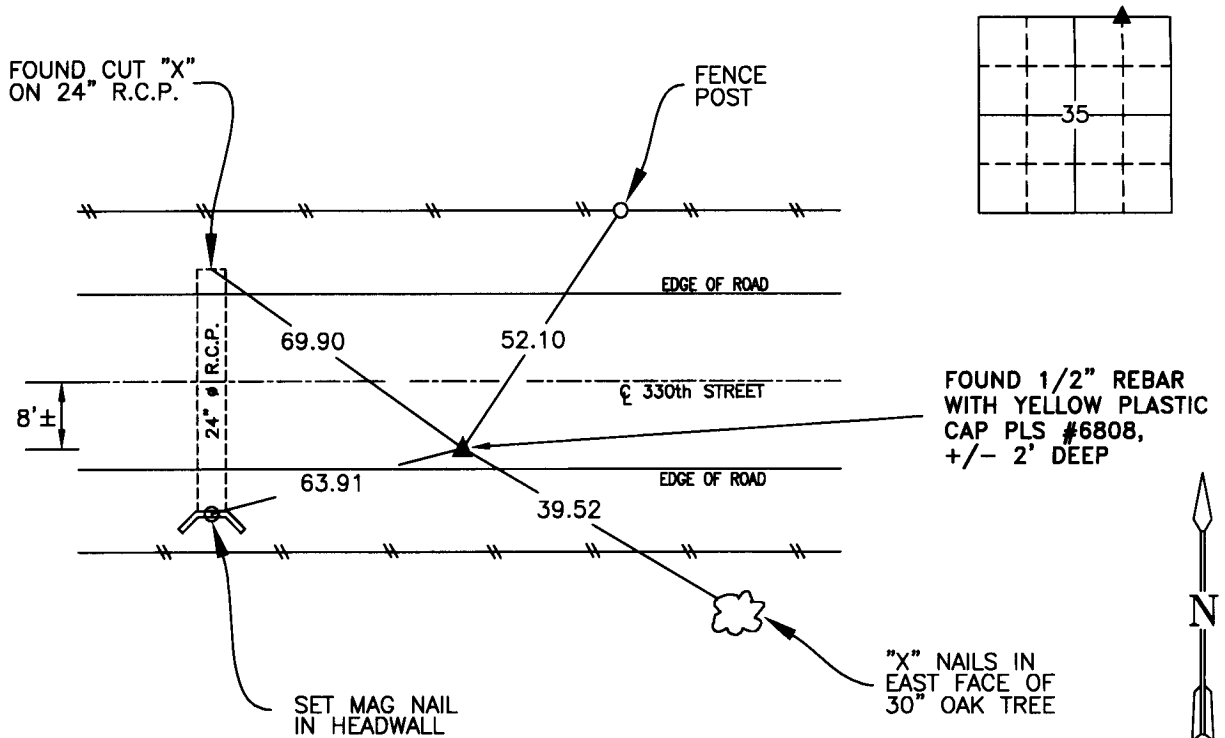
Land Survey Monuments situated in Section 35, Township 74 N, Range 28 W, of the Fifth Principal Meridian, Madison County, Iowa.
Previously recorded in N/A in County Recorder's Office.
(book, page, document number, etc.)

(Show reason for preparing this certificate, the evidence and detailed procedures used in establishing the corner positions and monumentation found or placed.)

Monument Description and Remarks: Found 1/2" iron pin with yellow plastic cap, #6808, +/-2 inches deep in county highway. Traversed the North line of the Northeast Quarter to verify location of the corner. The distance from the northwest corner of Northeast Quarter of the Northeast Quarter to the northeast corner of the Northeast Quarter of the Northeast Quarter checked reasonably close to the measured distances recorded on a survey in Book 2008, Page 1100, on file in the Madison County Recorders Office. Accepted position. This certificate was prepared because there was no other certificate previously recorded.

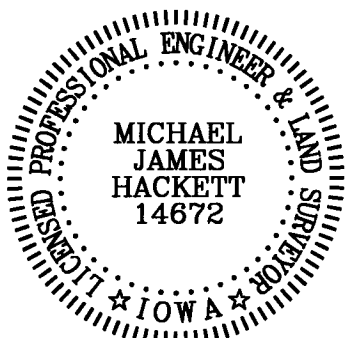
PLAN VIEW

(Show a minimum of three reference ties to durable physical objects, relevant monuments and physical conditions that will enable recovery of the corner.)



NW. COR., NE. 1/4, NE 1/4 SEC. 35

NOTE: ALL TIES TO "X" NAILS UNLESS NOTED



I hereby certify that this land surveying document was prepared and the related survey work was performed by me or under my direct personal supervision and that I am a duly Licensed Land Surveyor under the laws of the State of Iowa.

Signed Michael James Hackett Date 2-10-2017
Michael James Hackett

Iowa license number 14672.
My license renewal date is 12/31/2018.
Pages covered by this seal: 1.