

UNITED STATES PUBLIC LAND SURVEY CORNER CERTIFICATE

Land Survey Monument situated in
 Section 25, Township 77 NORTH, Range
26 WEST, of the Fifth Principal Meridian,
MADISON County, Iowa.

Previously recorded in N/A
 in County Recorder's Office.

FOR COUNTY RECORDER'S USE ONLY



Document 2017 245

Book 2017 Page 245 Type 06 043 Pages 1
 Date 1/20/2017 Time 10:04:37AM
 Rec Amt \$7.00

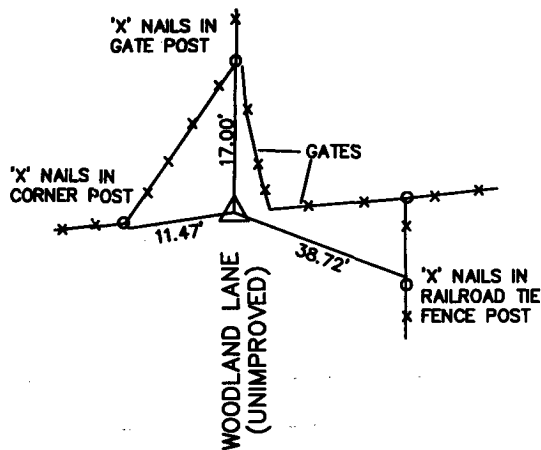
INDX
 ANNO
 SCAN
 CHEK

LISA SMITH, COUNTY RECORDER
 MADISON COUNTY IOWA

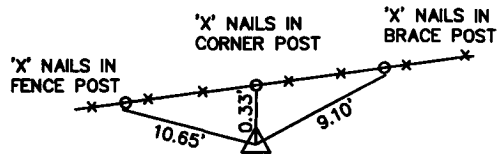
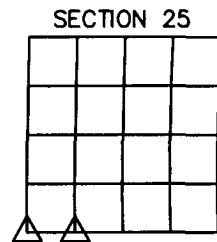
Monument Description and Remarks: SET SOUTHWEST CORNER IN EAST-WEST FENCELINE, IN LINE
WITH FENCELINE TO THE NORTH. THE DISTANCE TO THE SOUTH QUARTER CORNER (AS SHOWN IN CORNER
CERTIFICATE RECORDED IN BOOK 2002, PAGE 4193 IN THE MADISON COUNTY RECORDER'S OFFICE) FITS THE
DISTANCE SHOWN IN THE TOWNSHIP PLAT. SET THE SOUTHEAST CORNER OF THE SW 1/4 SW 1/4 ON LINE
AND EQUIDISTANT FROM THE SOUTHWEST CORNER AND THE SOUTH QUARTER CORNER.

PLAN-VIEW

(Show a minimum of three reference ties to durable physical objects, relevant monuments and physical conditions that will enable recovery of the corner.)



SOUTHWEST CORNER
 SEC. 25-T77N-R26W
 5/8" IRON ROD WITH
 CAP #14074 (EXPOSED)

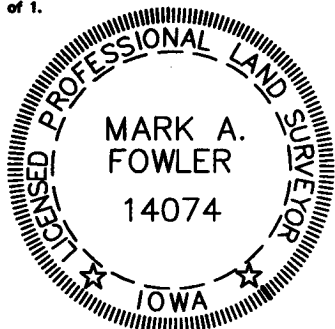


SOUTHEAST CORNER OF THE
SW 1/4 OF THE SW 1/4
 SEC. 25-T77N-R26W
 5/8" IRON ROD WITH
 CAP #14074 (EXPOSED)

I hereby certify that this land surveying document was prepared and the related survey work was performed by me or under my direct personal supervision and that I am a duly licensed land surveyor under the laws of the State of Iowa.

Mark A. Fowler 1-17-17
 Mark A. Fowler, LS Date
 License Number 14074

My license renewal date is December 31, 2018
 Pages or sheets covered by this seal: 1 of 1.



List corners to be indexed

Corners	Section	Twp	Range
SE CORNER SW 1/4 SW 1/4	25	77	26
SOUTHWEST CORNER	25	77	26