

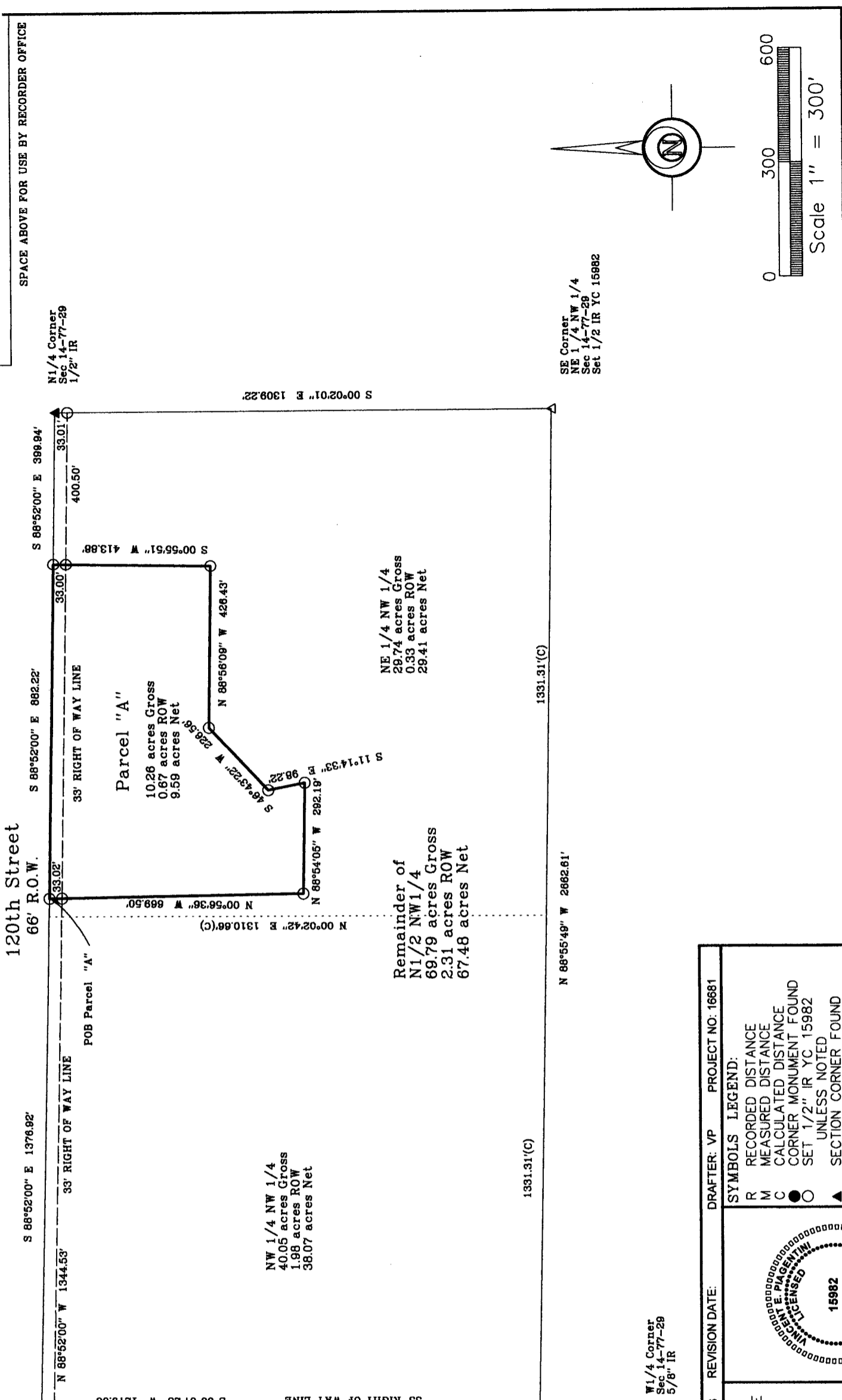
INDEX LEGEND

COUNTY: Madison
SECTION: 14 TOWNSHIP: 77 RANGE: 29
ALIQUOT PART: N 1/2 NW 1/4
PARCEL DESIGNATION: Parcel "A"
CITY: Earlham
SUBDIVISION NAME:
BLOCK: LOT(S):
SITE ADDRESS: 1440 120th Street
PROPRIETOR: Bertha Gilbert
REQUESTED BY: Teresa Lemon

PLAT OF SURVEY

PARCEL "A" OF THE N1/2 OF THE NW1/4 SECTION 14-77-29

Legal Description - Parcel "A"
 All that part of the Northeast Quarter of the Northwest Quarter of Section 14, Township 77 North, Range 29 West of the 5th P.M., Madison County, Iowa, more particularly described as follows:
 Commencing at the Northwest Corner of said Section 14; thence South 88°52'00" East, along the North line of the Northwest Quarter, a distance of 1376.92 feet, to the Point of Beginning; thence continuing South 88°52'00" East, along said North line, a distance of 882.22 feet; thence South 00°55'51" West, a distance of 413.88 feet; thence North 88°56'09" West, a distance of 426.43 feet; thence South 46°43'22" West, a distance of 226.56 feet; thence South 11°14'33" East, a distance of 88.22 feet; thence North 88°54'05" West, a distance of 292.19 feet; thence North 00°56'36" West a distance of 669.50 feet to the Point of Beginning, and containing 10.26 acre(s) of land, more or less, including 0.67 acres of road easement.



SPACE ABOVE FOR USE BY RECORDER OFFICE

NW Corner
 NW 1/4 NW 1/4
 Sec 14-77-29
 1/2" IR
 POC

SW Corner
 NW 1/4 NW 1/4
 Sec 14-77-29
 Set 1/2 IR YC 15982

SE Corner
 NE 1/4 NW 1/4
 Sec 14-77-29
 Set 1/2 IR YC 15982

NE 1/4 Corner
 Sec 14-77-29
 1/2" IR

W1/4 Corner
 Sec 14-77-29
 5/8" IR

N1/4 Corner
 Sec 14-77-29
 1/2" IR

SE Corner
 NE 1/4 NW 1/4
 Sec 14-77-29
 Set 1/2 IR YC 15982

NW Corner
 NW 1/4 NW 1/4
 Sec 14-77-29
 1/2" IR
 POC

SW Corner
 NW 1/4 NW 1/4
 Sec 14-77-29
 Set 1/2 IR YC 15982

SE Corner
 NE 1/4 NW 1/4
 Sec 14-77-29
 Set 1/2 IR YC 15982

NW Corner
 NW 1/4 NW 1/4
 Sec 14-77-29
 1/2" IR
 POC

SW Corner
 NW 1/4 NW 1/4
 Sec 14-77-29
 Set 1/2 IR YC 15982

SE Corner
 NE 1/4 NW 1/4
 Sec 14-77-29
 Set 1/2 IR YC 15982

NE 1/4 Corner
 Sec 14-77-29
 1/2" IR

W1/4 Corner
 Sec 14-77-29
 5/8" IR

N1/4 Corner
 Sec 14-77-29
 1/2" IR

SE Corner
 NE 1/4 NW 1/4
 Sec 14-77-29
 Set 1/2 IR YC 15982

NW Corner
 NW 1/4 NW 1/4
 Sec 14-77-29
 1/2" IR
 POC

SW Corner
 NW 1/4 NW 1/4
 Sec 14-77-29
 Set 1/2 IR YC 15982

SE Corner
 NE 1/4 NW 1/4
 Sec 14-77-29
 Set 1/2 IR YC 15982

NW Corner
 NW 1/4 NW 1/4
 Sec 14-77-29
 1/2" IR
 POC

SW Corner
 NW 1/4 NW 1/4
 Sec 14-77-29
 Set 1/2 IR YC 15982

SE Corner
 NE 1/4 NW 1/4
 Sec 14-77-29
 Set 1/2 IR YC 15982

NE 1/4 Corner
 Sec 14-77-29
 1/2" IR

W1/4 Corner
 Sec 14-77-29
 5/8" IR

N1/4 Corner
 Sec 14-77-29
 1/2" IR

SE Corner
 NE 1/4 NW 1/4
 Sec 14-77-29
 Set 1/2 IR YC 15982

NW Corner
 NW 1/4 NW 1/4
 Sec 14-77-29
 1/2" IR
 POC

SW Corner
 NW 1/4 NW 1/4
 Sec 14-77-29
 Set 1/2 IR YC 15982

SE Corner
 NE 1/4 NW 1/4
 Sec 14-77-29
 Set 1/2 IR YC 15982

NW Corner
 NW 1/4 NW 1/4
 Sec 14-77-29
 1/2" IR
 POC

SW Corner
 NW 1/4 NW 1/4
 Sec 14-77-29
 Set 1/2 IR YC 15982

SE Corner
 NE 1/4 NW 1/4
 Sec 14-77-29
 Set 1/2 IR YC 15982

NE 1/4 Corner
 Sec 14-77-29
 1/2" IR

W1/4 Corner
 Sec 14-77-29
 5/8" IR

N1/4 Corner
 Sec 14-77-29
 1/2" IR

SE Corner
 NE 1/4 NW 1/4
 Sec 14-77-29
 Set 1/2 IR YC 15982

NW Corner
 NW 1/4 NW 1/4
 Sec 14-77-29
 1/2" IR
 POC

SW Corner
 NW 1/4 NW 1/4
 Sec 14-77-29
 Set 1/2 IR YC 15982

SE Corner
 NE 1/4 NW 1/4
 Sec 14-77-29
 Set 1/2 IR YC 15982

NW Corner
 NW 1/4 NW 1/4
 Sec 14-77-29
 1/2" IR
 POC

SW Corner
 NW 1/4 NW 1/4
 Sec 14-77-29
 Set 1/2 IR YC 15982

SE Corner
 NE 1/4 NW 1/4
 Sec 14-77-29
 Set 1/2 IR YC 15982

NE 1/4 Corner
 Sec 14-77-29
 1/2" IR

W1/4 Corner
 Sec 14-77-29
 5/8" IR

N1/4 Corner
 Sec 14-77-29
 1/2" IR

SE Corner
 NE 1/4 NW 1/4
 Sec 14-77-29
 Set 1/2 IR YC 15982

NW Corner
 NW 1/4 NW 1/4
 Sec 14-77-29
 1/2" IR
 POC

SW Corner
 NW 1/4 NW 1/4
 Sec 14-77-29
 Set 1/2 IR YC 15982

SE Corner
 NE 1/4 NW 1/4
 Sec 14-77-29
 Set 1/2 IR YC 15982

NW Corner
 NW 1/4 NW 1/4
 Sec 14-77-29
 1/2" IR
 POC

SW Corner
 NW 1/4 NW 1/4
 Sec 14-77-29
 Set 1/2 IR YC 15982

SE Corner
 NE 1/4 NW 1/4
 Sec 14-77-29
 Set 1/2 IR YC 15982

NE 1/4 Corner
 Sec 14-77-29
 1/2" IR

W1/4 Corner
 Sec 14-77-29
 5/8" IR

N1/4 Corner
 Sec 14-77-29
 1/2" IR

SE Corner
 NE 1/4 NW 1/4
 Sec 14-77-29
 Set 1/2 IR YC 15982

NW Corner
 NW 1/4 NW 1/4
 Sec 14-77-29
 1/2" IR
 POC

SW Corner
 NW 1/4 NW 1/4
 Sec 14-77-29
 Set 1/2 IR YC 15982

SE Corner
 NE 1/4 NW 1/4
 Sec 14-77-29
 Set 1/2 IR YC 15982

NW Corner
 NW 1/4 NW 1/4
 Sec 14-77-29
 1/2" IR
 POC

SW Corner
 NW 1/4 NW 1/4
 Sec 14-77-29
 Set 1/2 IR YC 15982

SE Corner
 NE 1/4 NW 1/4
 Sec 14-77-29
 Set 1/2 IR YC 15982

NE 1/4 Corner
 Sec 14-77-29
 1/2" IR

W1/4 Corner
 Sec 14-77-29
 5/8" IR

N1/4 Corner
 Sec 14-77-29
 1/2" IR

SE Corner
 NE 1/4 NW 1/4
 Sec 14-77-29
 Set 1/2 IR YC 15982

NW Corner
 NW 1/4 NW 1/4
 Sec 14-77-29
 1/2" IR
 POC

SW Corner
 NW 1/4 NW 1/4
 Sec 14-77-29
 Set 1/2 IR YC 15982

SE Corner
 NE 1/4 NW 1/4
 Sec 14-77-29
 Set 1/2 IR YC 15982

NW Corner
 NW 1/4 NW 1/4
 Sec 14-77-29
 1/2" IR
 POC

SW Corner
 NW 1/4 NW 1/4
 Sec 14-77-29
 Set 1/2 IR YC 15982

SE Corner
 NE 1/4 NW 1/4
 Sec 14-77-29
 Set 1/2 IR YC 15982

NE 1/4 Corner
 Sec 14-77-29
 1/2" IR

W1/4 Corner
 Sec 14-77-29
 5/8" IR

N1/4 Corner
 Sec 14-77-29
 1/2" IR

SE Corner
 NE 1/4 NW 1/4
 Sec 14-77-29
 Set 1/2 IR YC 15982

NW Corner
 NW 1/4 NW 1/4
 Sec 14-77-29
 1/2" IR
 POC

SW Corner
 NW 1/4 NW 1/4
 Sec 14-77-29
 Set 1/2 IR YC 15982

SE Corner
 NE 1/4 NW 1/4
 Sec 14-77-29
 Set 1/2 IR YC 15982

NW Corner
 NW 1/4 NW 1/4
 Sec 14-77-29
 1/2" IR
 POC

SW Corner
 NW 1/4 NW 1/4
 Sec 14-77-29
 Set 1/2 IR YC 15982

SE Corner
 NE 1/4 NW 1/4
 Sec 14-77-29
 Set 1/2 IR YC 15982

NE 1/4 Corner
 Sec 14-77-29
 1/2" IR

W1/4 Corner
 Sec 14-77-29
 5/8" IR

N1/4 Corner
 Sec 14-77-29
 1/2" IR

SE Corner
 NE 1/4 NW 1/4
 Sec 14-77-29
 Set 1/2 IR YC 15982

NW Corner
 NW 1/4 NW 1/4
 Sec 14-77-29
 1/2" IR
 POC

SW Corner
 NW 1/4 NW 1/4
 Sec 14-77-29
 Set 1/2 IR YC 15982

SE Corner
 NE 1/4 NW 1/4
 Sec 14-77-29
 Set 1/2 IR YC 15982

NW Corner
 NW 1/4 NW 1/4
 Sec 14-77-29
 1/2" IR
 POC

SW Corner
 NW 1/4 NW 1/4
 Sec 14-77-29
 Set 1/2 IR YC 15982

SE Corner
 NE 1/4 NW 1/4
 Sec 14-77-29
 Set 1/2 IR YC 15982

NE 1/4 Corner
 Sec 14-77-29
 1/2" IR

W1/4 Corner
 Sec 14-77-29
 5/8" IR

N1/4 Corner
 Sec 14-77-29
 1/2" IR

SE Corner
 NE 1/4 NW 1/4
 Sec 14-77-29
 Set 1/2 IR YC 15982

NW Corner
 NW 1/4 NW 1/4
 Sec 14-77-29
 1/2" IR
 POC

SW Corner
 NW 1/4 NW 1/4
 Sec 14-77-29
 Set 1/2 IR YC 15982

SE Corner
 NE 1/4 NW 1/4
 Sec 14-77-29
 Set 1/2 IR YC 15982

NW Corner
 NW 1/4 NW 1/4
 Sec 14-77-29
 1/2" IR
 POC

SW Corner
 NW 1/4 NW 1/4
 Sec 14-77-29
 Set 1/2 IR YC 15982

SE Corner
 NE 1/4 NW 1/4
 Sec 14-77-29
 Set 1/2 IR YC 15982

NE 1/4 Corner
 Sec 14-77-29
 1/2" IR

W1/4 Corner
 Sec 14-77-29
 5/8" IR

N1/4 Corner
 Sec 14-77-29
 1/2" IR

SE Corner
 NE 1/4 NW 1/4
 Sec 14-77-29
 Set 1/2 IR YC 15982

NW Corner
 NW 1/4 NW 1/4
 Sec 14-77-29
 1/2" IR
 POC

SW Corner
 NW 1/4 NW 1/4
 Sec 14-77-29
 Set 1/2 IR YC 15982

SE Corner
 NE 1/4 NW 1/4
 Sec 14-77-29
 Set 1/2 IR YC 15982

NW Corner
 NW 1/4 NW 1/4
 Sec 14-77-29
 1/2" IR
 POC

SW Corner
 NW 1/4 NW 1/4
 Sec 14-77-29
 Set 1/2 IR YC 15982

SE Corner
 NE 1/4 NW 1/4
 Sec 14-77-29
 Set 1/2 IR YC 15982

NE 1/4 Corner
 Sec 14-77-29
 1/2" IR

W1/4 Corner
 Sec 14-77-29
 5/8" IR

N1/4 Corner
 Sec 14-77-29
 1/2" IR

SE Corner
 NE 1/4 NW 1/4
 Sec 14-77-29
 Set 1/2 IR YC 15982

NW Corner
 NW 1/4 NW 1/4
 Sec 14-77-29
 1/2" IR
 POC

SW Corner
 NW 1/4 NW 1/4
 Sec 14-77-29
 Set 1/2 IR YC 15982

SE Corner
 NE 1/4 NW 1/4
 Sec 14-77-29
 Set 1/2 IR YC 15982

NW Corner
 NW 1/4 NW 1/4
 Sec 14-77-29
 1/2" IR
 POC

SW Corner
 NW 1/4 NW 1/4
 Sec 14-77-29
 Set 1/2 IR YC 15982

SE Corner
 NE 1/4 NW 1/4
 Sec 14-77-29
 Set 1/2 IR YC 15982

NE 1/4 Corner
 Sec 14-77-29
 1/2" IR

W1/4 Corner
 Sec 14-77-29
 5/8" IR

N1/4 Corner
 Sec 14-77-29
 1/2" IR

SE Corner
 NE 1/4 NW 1/4
 Sec 14-77-29
 Set 1/2 IR YC 15982

NW Corner
 NW 1/4 NW 1/4
 Sec 14-77-29
 1/2" IR
 POC

SW Corner
 NW 1/4 NW 1/4
 Sec 14-77-29
 Set 1/2 IR YC 15982

SE Corner
 NE 1/4 NW 1/4
 Sec 14-77-29
 Set 1/2 IR YC 15982

NW Corner
 NW 1/4 NW 1/4
 Sec 14-77-29
 1/2" IR
 POC

SW Corner
 NW 1/4 NW 1/4
 Sec 14-77-29
 Set 1/2 IR YC 15982

SE Corner
 NE 1/4 NW 1/4
 Sec 14-77-29
 Set 1/2 IR YC 15982

NE 1/4 Corner
 Sec 14-77-29
 1/2" IR

W1/4 Corner
 Sec 14-77-29
 5/8" IR

N1/4 Corner
 Sec 14-77-29
 1/2" IR

SE Corner
 NE 1/4 NW 1/4
 Sec 14-77-29
 Set 1/2 IR YC 15982

NW Corner
 NW 1/4 NW 1/4
 Sec 14-77-29
 1/2" IR
 POC

SW Corner
 NW 1/4 NW 1/4
 Sec 14-77-29
 Set 1/2 IR YC 15982

SE Corner
 NE 1/4 NW 1/4
 Sec 14-77-29
 Set 1/2 IR YC 15982

NW Corner
 NW 1/4 NW 1/4
 Sec 14-77-29
 1/2" IR
 POC

RESOLUTION 17-04

A RESOLUTION STATING THE EARLHAM CITY COUNCIL
WAIVES ITS RIGHT TO REVIEW A PROPOSED DIVISION OF PROPERTY,
1440 120th STREET, EARLHAM, IOWA,
OWNERS MARLYN & BERTHA GILBERT, WHICH IS WITHIN TWO (2)
MILES OF THE CORPORATE LIMITS OF THE CITY OF EARLHAM

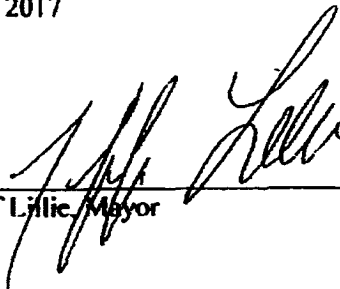
WHEREAS, The City of Earlham has received a request to review a division of land at 1440 120th Street, Earlham, Iowa, into two parcels that is within two (2) miles of the city corporate limits; and

WHEREAS, Chapter 166.01 of the Code of Ordinances of Earlham, Iowa, states the City has the authority to review and approve subdivisions and plats located within two (2) miles of the corporate limits of the City; and

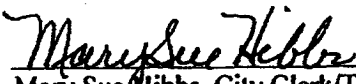
WHEREAS, Chapter 166.02(15) defines a subdivision as the division of land into three (3) or more lots for the purpose, whether immediate or future, of transfer of ownership or building development.

NOW, THEREFORE BE IT RESOLVED, by the City Council of Earlham, Iowa, that they hereby waive their right to review the proposed division of property.

Passed and approved this 9th day of January, 2017



Jeff Lillie, Mayor

Attest: 

Mary Sue Hibbs, City Clerk/Treasurer

Introduced by: Royster Seconded by: Petersen

VOTE	AYE	NAY	ABSENT	ABSTAIN
Brock Fredericksen	✓			
Adam Griswold	✓			
Scott Petersen	✓			
Jamie Royster	✓			
Chris Swalla			✓	